

HAUS2 RABBIT PAB

货号: S221723

产品全名: HAUS2 兔多抗

基因符号: CEP27; C15orf25; Hs117025

UNIPROT ID: Q9NVX0 (Gene Accession - NP_060567)

背景: The protein encoded by this gene is a subunit of the augmin complex. The augmin complex plays a role in microtubule attachment to the kinetochore and central spindle formation.

抗原: Synthetic peptide of human HAUS2

经过测试的应用: ELISA, WB, IHC

推荐稀释比: IHC: 50-200; WB: 500-2000; ELISA: 5000-10000

种属反应性: Rabbit

克隆性: Rabbit Polyclonal

亚型: Immunogen-specific rabbit IgG

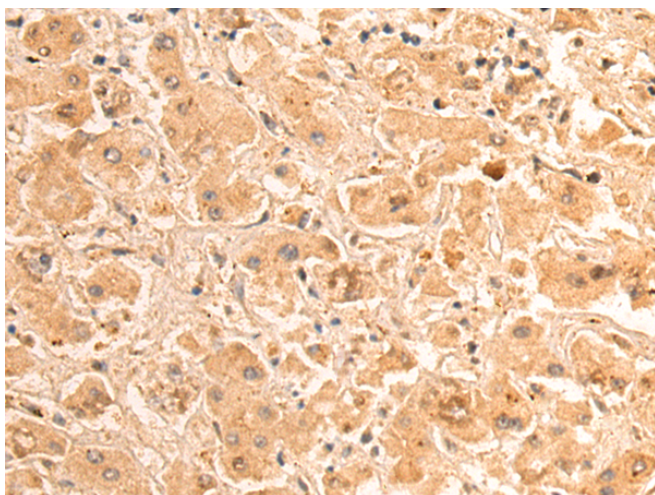
纯化: Antigen affinity purification

种属反应性: Human, Mouse

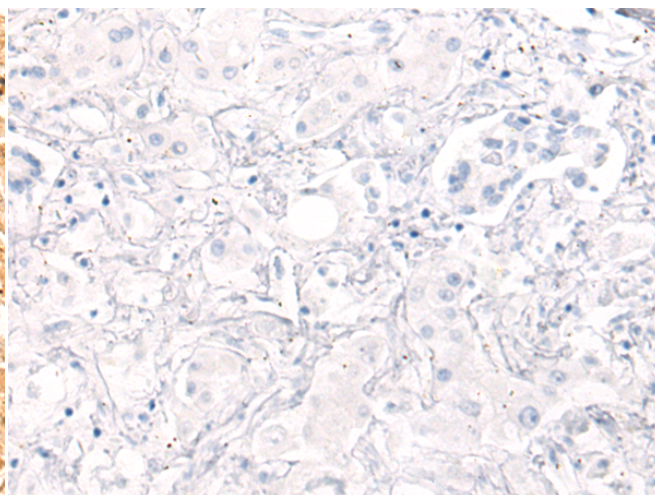
成分: PBS (without Mg²⁺ and Ca²⁺), pH 7.4, 150 mM NaCl, 0.05% Sodium Azide and 40% glycerol

研究领域: Epigenetics and Nuclear Signaling

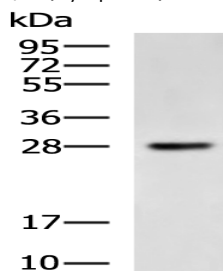
储存和运输: Store at -20°C. Avoid repeated freezing and thawing



Immunohistochemistry analysis of paraffin embedded Human liver cancer tissue using 221723 (HAUS2 Antibody) at a dilution of 1/55 (cytoplasm).



In comparison with the IHC on the left, the same paraffin-embedded Human liver cancer tissue is first treated with the synthetic peptide and then with 221723 (Anti-HAUS2 Antibody) at dilution 1/55.



Gel: 12% SDS-PAGE, Lysate: 40 µg;

Lane: Mouse pancreas tissue lysate;

Primary antibody: 221723 (HAUS2 Antibody) at dilution 1/400;

Secondary antibody: HRP-conjugated Goat anti rabbit IgG at 1/5000 dilution;

Exposure time: 2 minutes