

HADHA RABBIT PAB

货号: S211322

产品全名: HADHA 兔多抗

基因符号: GBP; ECHA; HADH; LCEH; MTPA; LCHAD; TP-ALPHA

UNIPROT ID: P40939 (Gene Accession - BC009235)

背景: This gene encodes the alpha subunit of the mitochondrial trifunctional protein, which catalyzes the last three steps of mitochondrial beta-oxidation of long chain fatty acids. The mitochondrial membrane-bound heterocomplex is composed of four alpha and four beta subunits, with the alpha subunit catalyzing the 3-hydroxyacyl-CoA dehydrogenase and enoyl-CoA hydratase activities. Mutations in this gene result in trifunctional protein deficiency or LCHAD deficiency. The genes of the alpha and beta subunits of the mitochondrial trifunctional protein are located adjacent to each other in the human genome in a head-to-head orientation.

抗原: Fusion protein of human HADHA

经过测试的应用: ELISA, WB, IHC

推荐稀释比: IHC: 25-100;WB: 1000-5000;ELISA: 5000-10000

种属反应性: Rabbit

克隆性: Rabbit Polyclonal

亚型: Immunogen-specific rabbit IgG

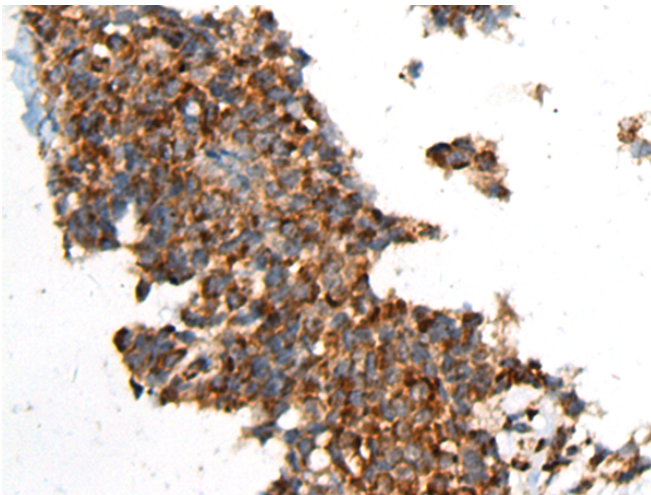
纯化: Antigen affinity purification

种属反应性: Human, Mouse, Rat

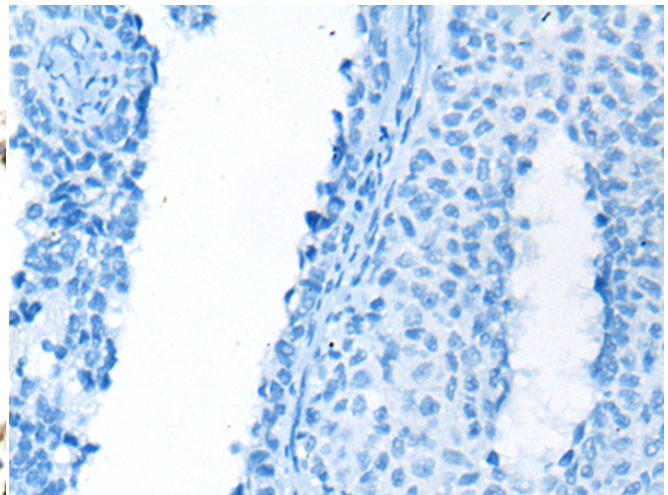
成分: PBS (without Mg²⁺ and Ca²⁺), pH 7.4, 150 mM NaCl, 0.05% Sodium Azide and 40% glycerol

研究领域: Metabolism, Cancer, Cardiovascular

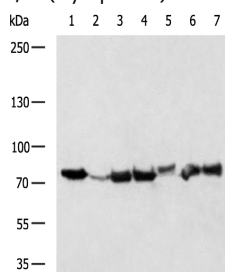
储存和运输: Store at -20°C. Avoid repeated freezing and thawing



Immunohistochemistry analysis of paraffin embedded Human ovarian cancer tissue using 211322 (HADHA Antibody) at a dilution of 1/35 (Cytoplasm).



In comparison with the IHC on the left, the same paraffin-embedded Human ovarian cancer tissue is first treated with the fusion protein and then with 211322 (Anti-HADHA Antibody) at dilution 1/35.



Gel: 6% SDS-PAGE, Lysate: 40 µg;

Lane 1-7: HepG2, Jurkat, 293T, HeLa, RAW264.7, K562, NIH/3T3 cell lysates;

Primary antibody: 211322 (HADHA Antibody) at dilution 1/500;

Secondary antibody: HRP-conjugated Goat anti rabbit IgG at 1/5000 dilution;

Exposure time: 20 seconds



Product Description

Pioneering GTPase and Oncogene Product Development since 2010
