

## HADHA RABBIT MAB

货号: N262311

产品全名: HADHA 兔单克隆抗体

基因符号 GBP; ECHA; HADH; LCEH; MTPA; LCHAD; TP-ALPHA

**UNIPROT ID:** P40939

背景: Mitochondrial trifunctional enzyme catalyzes the last three of the four reactions of the mitochondrial beta-oxidation pathway.

抗原: A synthetic peptide of human HADHA

经过测试的应用: WB,IHC-F,IHC-P,ICC/IF,IP

推荐稀释比: WB: 1/500-1/1000 IHC: 1/50-1/100 IF: 1/50-1/200 IP: 1/20

种属反应性: Rabbit

克隆性: Rabbit Monoclonal

克隆编号: R07-6H4

分子量: Calculated MW: 83 kDa; Observed MW: 78 kDa

亚型: IgG

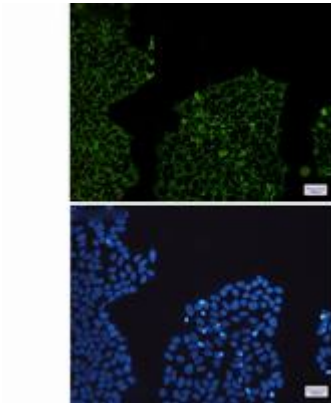
纯化: Affinity Purified

种属反应性: Human, Mouse and Rat

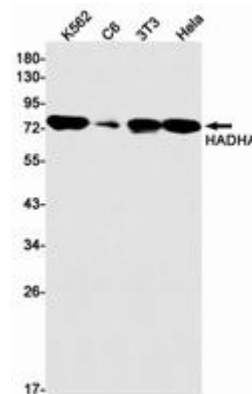
成分: PBS (without Mg<sup>2+</sup> and Ca<sup>2+</sup>), pH 7.3 containing 50% glycerol, 0.5% BSA and 0.02% sodium azide

研究领域: Tags & Cell Markers

储存和运输: Store at -20°C. Avoid repeated freezing and thawing



Immunocytochemistry analysis of HADHA (green) in Hela using HADHA antibody, and DAPI (blue)



Western blot analysis of HADHA in K562, C6, 3T3, Hela lysates using HADHA antibody.



Immunohistochemistry analysis of paraffin-embedded Human colon cancer using HADHA antibody. High-pressure and temperature Sodium Citrate pH 6.0 was used for antigen retrieval.