

## HADHA RABBIT MAB

货号: N262312

产品全名: HADHA 兔单克隆抗体

基因符号 GBP; ECHA; HADH; LCEH; MTPA; LCHAD; TP-ALPHA

**UNIPROT ID:** P40939

背景: Mitochondrial trifunctional enzyme catalyzes the last three of the four reactions of the mitochondrial beta-oxidation pathway.

抗原: A synthetic peptide of human HADHA

经过测试的应用: WB, ICC/IF, IP

推荐稀释比: WB: 1/500-1/1000 IF: 1/50-1/200 IP: 1/20

种属反应性: Rabbit

克隆性: Rabbit Monoclonal

克隆编号: R08-9D9

分子量: Calculated MW: 83 kDa; Observed MW: 78 kDa

亚型: IgG

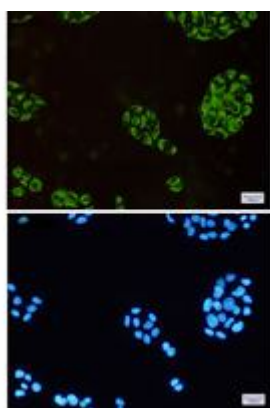
纯化: Affinity Purified

种属反应性: Human

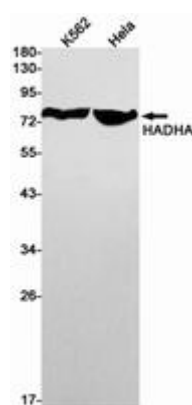
成分: PBS (without Mg<sup>2+</sup> and Ca<sup>2+</sup>), pH 7.3 containing 50% glycerol, 0.5% BSA and 0.02% sodium azide

研究领域: Tags & Cell Markers

储存和运输: Store at -20°C. Avoid repeated freezing and thawing



Immunocytochemistry analysis of HADHA (green) in HeLa using HADHA antibody, and DAPI (blue)



Western blot analysis of HADHA in K562, HeLa lysates using HADHA antibody.



# Product Description

Pioneering GTPase and Oncogene Product Development since 2010

---