

HACL1 RABBIT PAB

货号: S217510

产品全名: HACL1 兔多抗

基因符号: HPCL; HPCL2; PHYH2; 2-HPCL

UNIPROT ID: Q9UJ83 (Gene Accession - BC001627)

背景: HACL1 (2-hydroxyacyl-CoA lyase 1) is also known as HPCL or 2-HPCL (2-hydroxyphytanoyl-CoA lyase) and is a 578 amino acid protein. HACL1 is abundantly expressed in liver, and is also expressed in kidney, heart and skeletal muscle, where it is localized to peroxisomes. HACL1 functions in lipid metabolism as well as fatty acid metabolism and is able to form homotetramers.

抗原: Fusion protein of human HACL1

经过测试的应用: ELISA, WB, IHC

推荐稀释比: IHC: 50-200;WB: 200-1000;ELISA: 1000-2000

种属反应性: Rabbit

克隆性: Rabbit Polyclonal

亚型: Immunogen-specific rabbit IgG

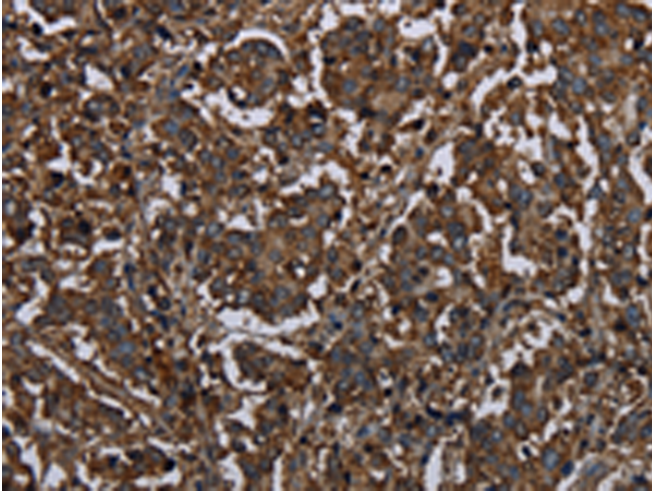
纯化: Antigen affinity purification

种属反应性: Human, Mouse, Rat

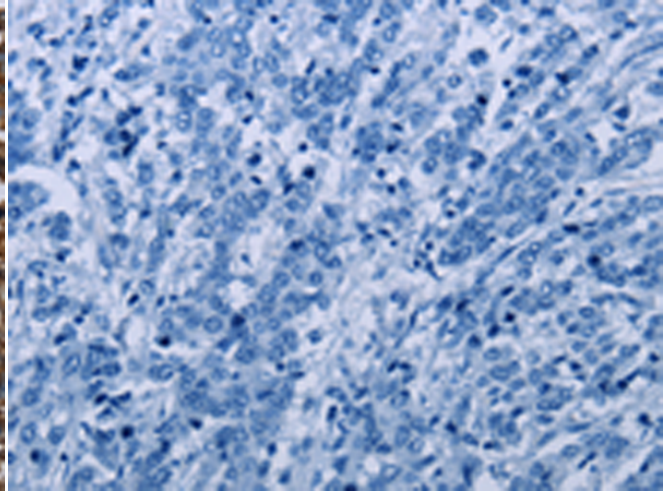
成分: PBS (without Mg²⁺ and Ca²⁺), pH 7.4, 150 mM NaCl, 0.05% Sodium Azide and 40% glycerol

研究领域: Cancer, Metabolism

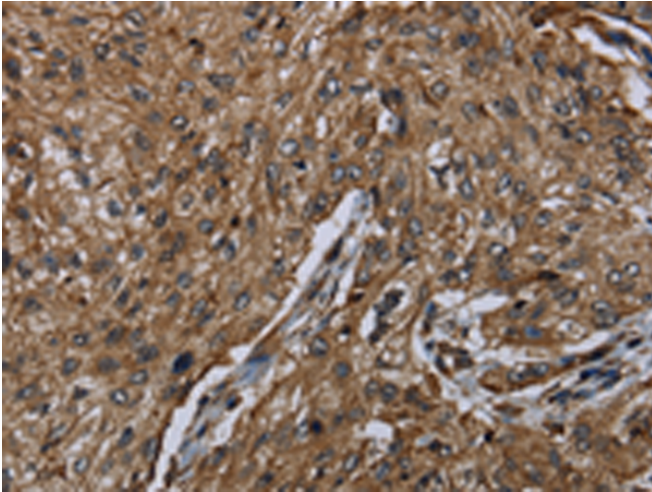
储存和运输: Store at -20°C. Avoid repeated freezing and thawing



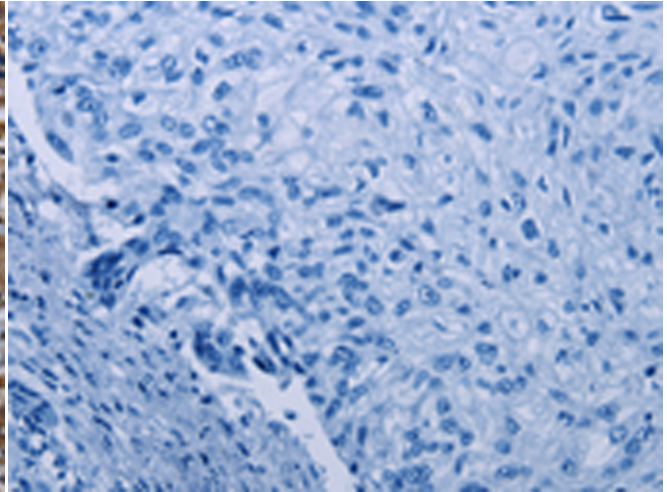
Immunohistochemistry analysis of paraffin embedded Human liver cancer tissue using 217510(HACL1 Antibody) at a dilution of 1/20(Cytoplasm).



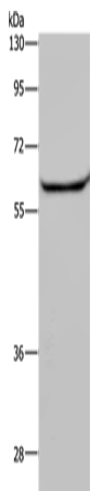
In comparison with the IHC on the left, the same paraffin-embedded Human liver cancer tissue is first treated with the fusion protein and then with 217510(Anti-HACL1 Antibody) at dilution 1/20.



The image on the left is immunohistochemistry of paraffin-embedded Human esophagus cancer tissue using 217510(Anti-HACL1 Antibody) at a dilution of 1/20.



In comparison with the IHC on the left, the same paraffin-embedded Human esophagus cancer tissue is first treated with fusion protein and then with D222494(Anti-HACL1 Antibody) at dilution 1/20.



Gel: 8%SDS-PAGE, Lysate: 40 µg;
Lane: Human testis tissue;
Primary antibody: 217510(HACL1 Antibody) at dilution 1/200;
Secondary antibody: Goat anti rabbit IgG at 1/8000 dilution;
Exposure time: 30 seconds



Product Description

Pioneering GTPase and Oncogene Product Development since 2010
