

GUCY1B2 RABBIT PAB

货号: S222155

产品全名: GUCY1B2 兔多抗

基因符号: GC-SB2

UNIPROT ID: O75343 (Gene Accession - Hs.411573)

背景: Guanylate Cyclase is a heterodimer of an alpha and a beta chain. Its enzymatic activity transforms GTP to GMP releasing a diphosphate. It binds 1 or 2 hemes per heterodimer. It is activated by nitric oxide in the presence of magnesium or manganese ions. There are two types of guanylate cyclase: soluble form and membrane-associated receptor form.

抗原: Synthetic peptide of human GUCY1B2

经过测试的应用: ELISA, IHC

推荐稀释比: IHC: 20-100; ELISA: 5000-10000

种属反应性: Rabbit

克隆性: Rabbit Polyclonal

亚型: Immunogen-specific rabbit IgG

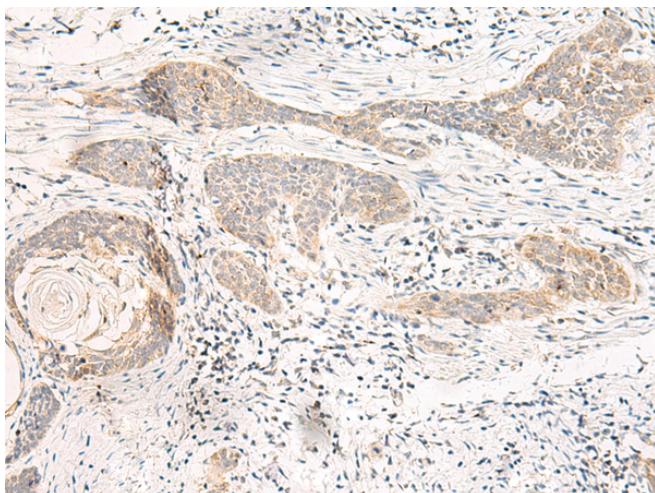
纯化: Antigen affinity purification

种属反应性: Human

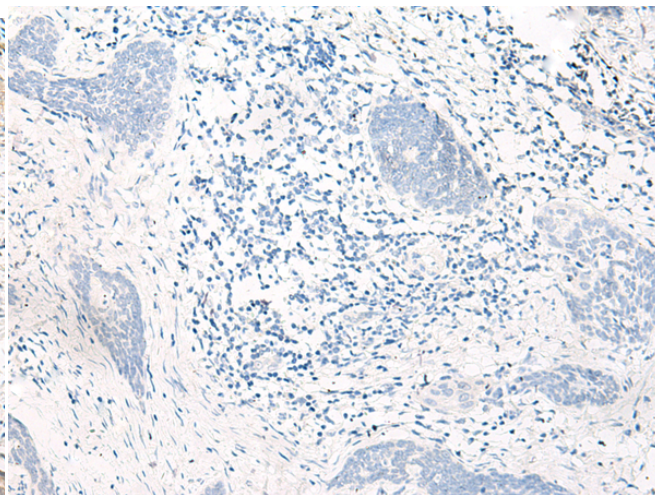
成分: PBS (without Mg²⁺ and Ca²⁺), pH 7.4, 150 mM NaCl, 0.05% Sodium Azide and 40% glycerol

研究领域: Signal Transduction

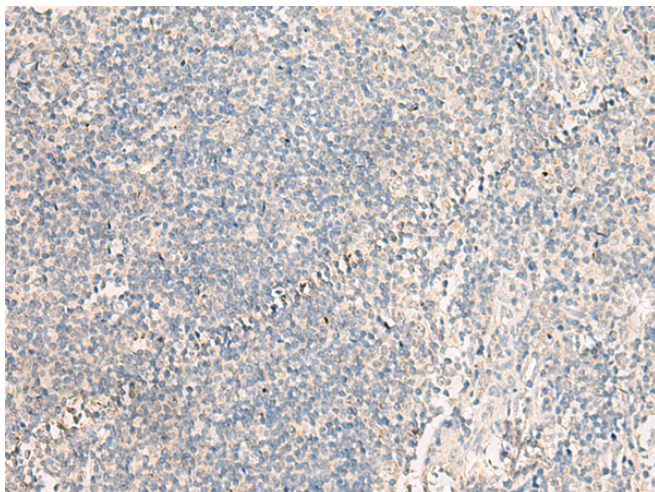
储存和运输: Store at -20°C. Avoid repeated freezing and thawing



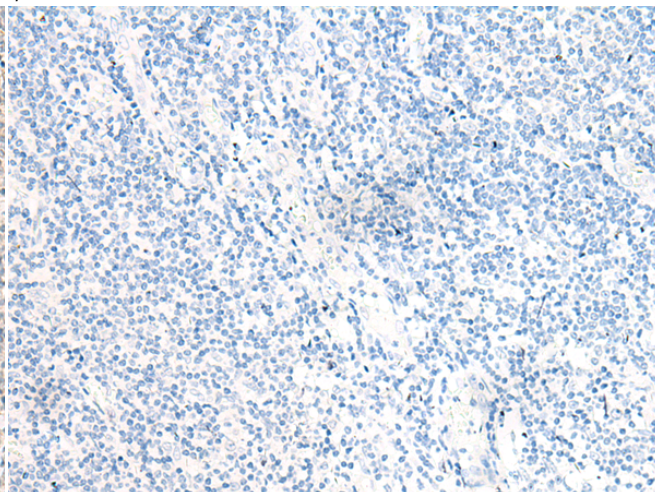
Immunohistochemistry analysis of paraffin embedded Human esophagus cancer tissue using 222155(GUCY1B2 Antibody) at a dilution of 1/20(Cytoplasm).



In comparison with the IHC on the left, the same paraffin-embedded Human esophagus cancer tissue is first treated with the synthetic peptide and then with 222155(Anti-GUCY1B2 Antibody) at dilution 1/20.



The image on the left is immunohistochemistry of paraffin-embedded Human tonsil tissue using 222155(Anti-GUCY1B2 Antibody) at a dilution of 1/20.



In comparison with the IHC on the left, the same paraffin-embedded Human tonsil tissue is first treated with synthetic peptide and then with D264142(Anti-GUCY1B2 Antibody) at dilution 1/20.



Product Description

Pioneering GTPase and Oncogene Product Development since 2010
