

## GUCY1B1 RABBIT PAB

货号: S219422

产品全名: GUCY1B1 兔多抗

基因符号: GUCB3; GC-SB3; GUC1B3; GUCSB3; GUCY1B3; GC-S-beta-1

**UNIPROT ID:** Q02153 (Gene Accession - BC047620 )

**背景:** This gene encodes the beta subunit of the soluble guanylate cyclase (sGC), which catalyzes the conversion of GTP (guanosine triphosphate) to cGMP (cyclic guanosine monophosphate). The encoded protein contains an HNOX domain, which serves as a receptor for ligands such as nitric oxide, oxygen and nitrovasodilator drugs. Alternative splicing results in multiple transcript variants. [provided by RefSeq, May 2014]

**抗原:** Fusion protein of human GUCY1B1

**经过测试的应用:** ELISA, IHC

**推荐稀释比:** IHC: 150-300; ELISA: 5000-10000

**种属反应性:** Rabbit

**克隆性:** Rabbit Polyclonal

**亚型:** Immunogen-specific rabbit IgG

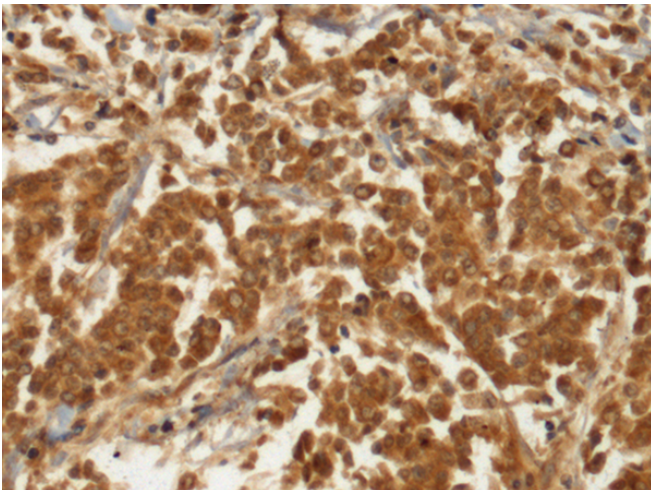
**纯化:** Antigen affinity purification

**种属反应性:** Human, Mouse, Rat

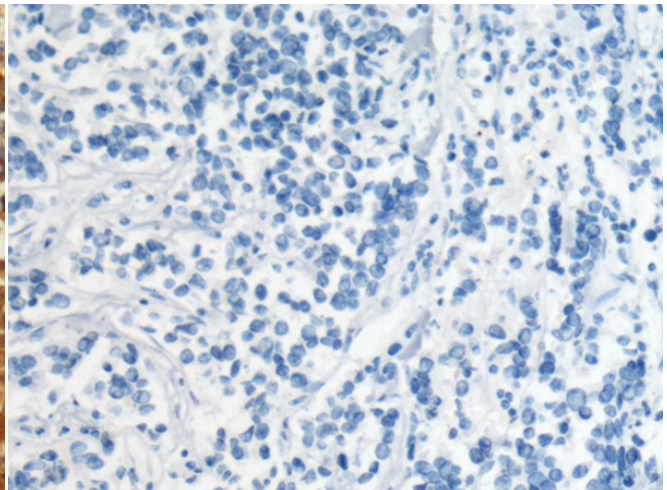
**成分:** PBS (without Mg<sup>2+</sup> and Ca<sup>2+</sup>), pH 7.4, 150 mM NaCl, 0.05% Sodium Azide and 40% glycerol

**研究领域:** Signal Transduction

**储存和运输:** Store at -20°C. Avoid repeated freezing and thawing



Immunohistochemistry analysis of paraffin embedded Human breast cancer tissue using 219422(GUCY1B1 Antibody) at a dilution of 1/110(Cytoplasm).



In comparison with the IHC on the left, the same paraffin-embedded Human breast cancer tissue is first treated with the fusion protein and then with 219422(Anti-GUCY1B1 Antibody) at dilution 1/110.