

GUCA1A RABBIT PAB

货号: S219251

产品全名: GUCA1A 兔多抗

基因符号: COD3; GCAP; GUCA; GCAP1; GUCA1; CORD14; C6orf131

UNIPROT ID: P43080 (Gene Accession - BC031663)

背景: This gene encodes an enzyme that plays a role in the recovery of retinal photoreceptors from photobleaching. This enzyme promotes the activity of retinal guanylyl cyclase-1 (GC1) at low calcium concentrations and inhibits GC1 at high calcium concentrations. Mutations in this gene can cause cone dystrophy 3 and code-rod dystrophy 14. Alternative splicing results in multiple transcript variants.

抗原: Fusion protein of human GUCA1A

经过测试的应用: ELISA, IHC

推荐稀释比: IHC: 100-300; ELISA: 5000-10000

种属反应性: Rabbit

克隆性: Rabbit Polyclonal

亚型: Immunogen-specific rabbit IgG

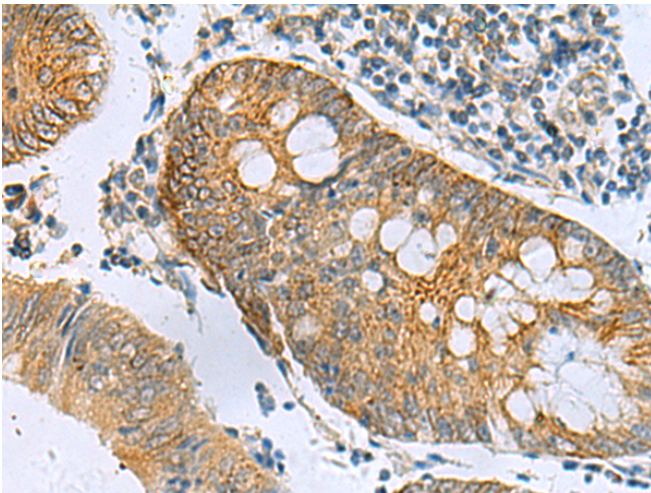
纯化: Antigen affinity purification

种属反应性: Human, Mouse

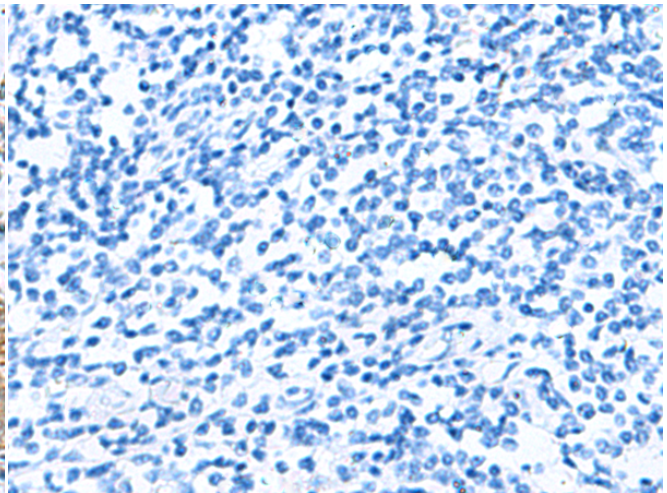
成分: PBS (without Mg²⁺ and Ca²⁺), pH 7.4, 150 mM NaCl, 0.05% Sodium Azide and 40% glycerol

研究领域: Neuroscience

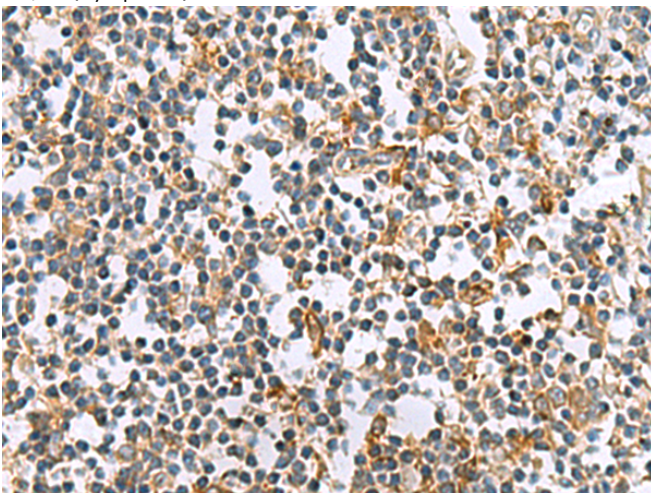
储存和运输: Store at -20°C. Avoid repeated freezing and thawing



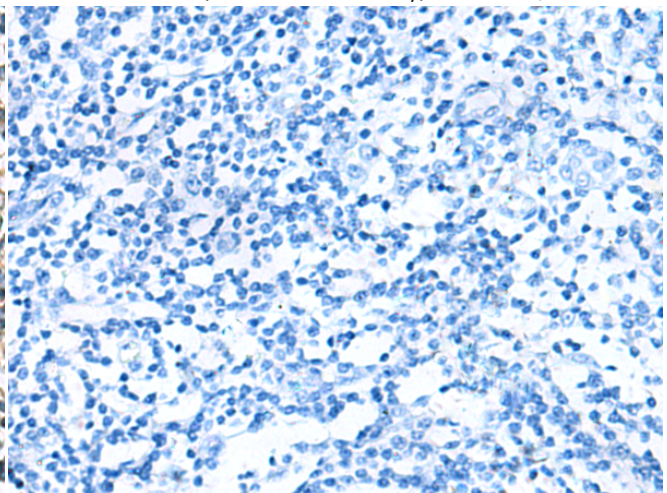
Immunohistochemistry analysis of paraffin embedded Human colorectal cancer tissue using 219251(GUCA1A Antibody) at a dilution of 1/105(Cytoplasm).



In comparison with the IHC on the left, the same paraffin-embedded Human colorectal cancer tissue is first treated with the fusion protein and then with 219251(Anti-GUCA1A Antibody) at dilution 1/105.



The image on the left is immunohistochemistry of paraffin-embedded Human tonsil tissue using 219251(Anti-GUCA1A Antibody) at a dilution of 1/105.



In comparison with the IHC on the left, the same paraffin-embedded Human tonsil tissue is first treated with fusion protein and then with D226134(Anti-GUCA1A Antibody) at dilution 1/105.



Product Description

Pioneering GTPase and Oncogene Product Development since 2010
