

## GTF3C4 RABBIT PAB

货号: S222154

产品全名: GTF3C4 兔多抗

基因符号 KAT12; TFIIH90; TFIIIC90; TFIIIC290; TF3C-delta; TFIIICDELTA

**UNIPROT ID:** Q9UKN8 (Gene Accession - NP\_036336)

**背景:** Essential for RNA polymerase III to make a number of small nuclear and cytoplasmic RNAs, including 5S RNA, tRNA, and adenovirus-associated (VA) RNA of both cellular and viral origin. Has histone acetyltransferase activity (HAT) with unique specificity for free and nucleosomal H3. May cooperate with GTF3C5 in facilitating the recruitment of TFIIB and RNA polymerase through direct interactions with BRFI, POLR3C and POLR3F. May be localized close to the A box.

**抗原:** Synthetic peptide of human GTF3C4

**经过测试的应用:** ELISA, WB, IHC

**推荐稀释比:** IHC: 150-300;WB: 1000-5000;ELISA: 5000-10000

**种属反应性:** Rabbit

**克隆性:** Rabbit Polyclonal

**亚型:** Immunogen-specific rabbit IgG

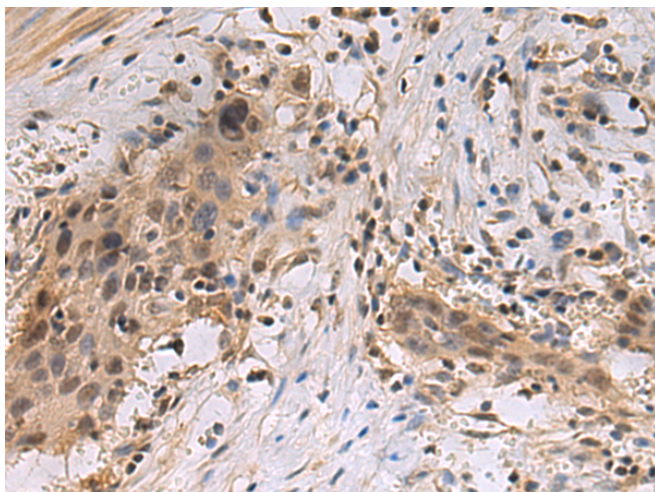
**纯化:** Antigen affinity purification

**种属反应性:** Human, Mouse

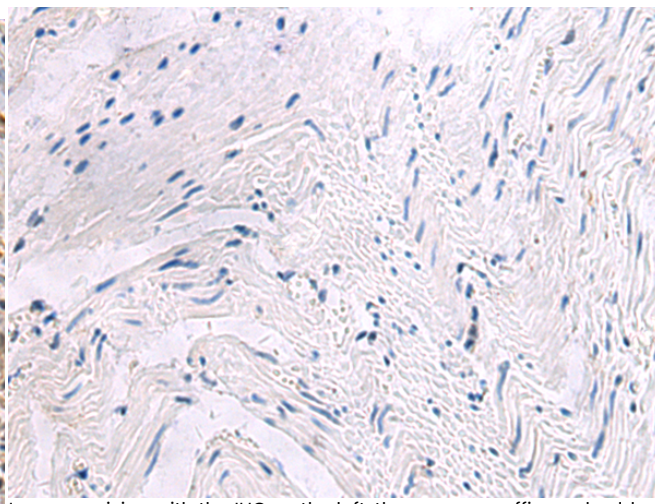
**成分:** PBS (without Mg<sup>2+</sup> and Ca<sup>2+</sup>), pH 7.4, 150 mM NaCl, 0.05% Sodium Azide and 40% glycerol

**研究领域:** Epigenetics and Nuclear Signaling

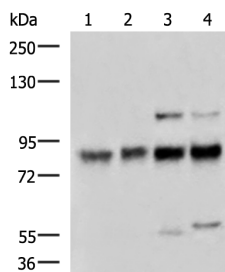
**储存和运输:** Store at -20°C. Avoid repeated freezing and thawing



Immunohistochemistry analysis of paraffin embedded Human esophagus cancer tissue using 222154(GTF3C4 Antibody) at a dilution of 1/160(Nucleus).



In comparison with the IHC on the left, the same paraffin-embedded Human esophagus cancer tissue is first treated with the synthetic peptide and then with 222154(Anti-GTF3C4 Antibody) at dilution 1/160.



Gel: 6%SDS-PAGE, Lysate: 40 µg;

Lane 1-4: A172, HeLa, Jurkat and Raji cell lysates;

Primary antibody: 222154(GTF3C4 Antibody) at dilution 1/1300;

Secondary antibody: HRP-conjugated Goat anti rabbit IgG at 1/5000 dilution;

Exposure time: 2 minutes