

GTF3C3 RABBIT PAB

货号: S222153

产品全名: GTF3C3 兔多抗

基因符号: TFIIIC102; TFIIICgamma; TFIIIC2-102

UNIPROT ID: Q9Y5Q9 (Gene Accession - NP_036218)

背景: The protein encoded by this gene is part of the TFIIIC complex, which binds to the promoters of small nuclear and cytoplasmic RNA genes in order to recruit RNA polymerase III. The TFIIIC2 complex is composed of six subunits. Two transcript variants encoding different isoforms have been found for this gene.

抗原: Synthetic peptide of human GTF3C3

经过测试的应用: ELISA, IHC

推荐稀释比: IHC: Oct-50; ELISA: 5000-10000

种属反应性: Rabbit

克隆性: Rabbit Polyclonal

亚型: Immunogen-specific rabbit IgG

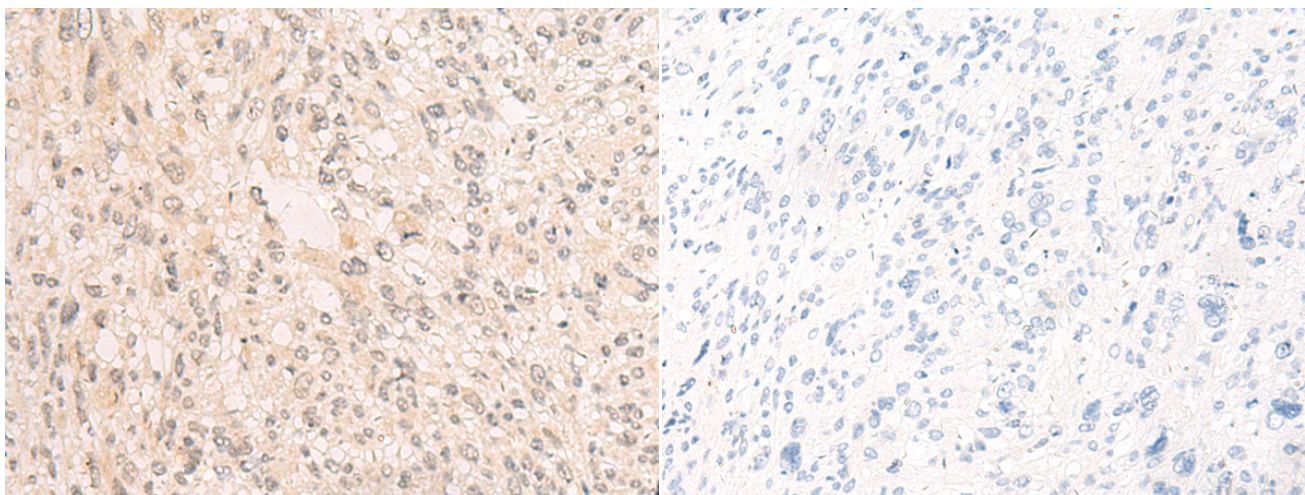
纯化: Antigen affinity purification

种属反应性: Human

成分: PBS (without Mg²⁺ and Ca²⁺), pH 7.4, 150 mM NaCl, 0.05% Sodium Azide and 40% glycerol

研究领域: Epigenetics and Nuclear Signaling

储存和运输: Store at -20°C. Avoid repeated freezing and thawing



Immunohistochemistry analysis of paraffin embedded Human liver cancer tissue using 222153(GTF3C3 Antibody) at a dilution of 1/20(Nucleus).

In comparison with the IHC on the left, the same paraffin-embedded Human liver cancer tissue is first treated with the synthetic peptide and then with 222153(Anti-GTF3C3 Antibody) at dilution 1/20.