

GTF3A RABBIT PAB

货号: S222152

产品全名: GTF3A 兔多抗

基因符号 AP2; TFIIIA

UNIPROT ID: Q92664 (Gene Accession - NP_002088)

背景: The product of this gene is a zinc finger protein with nine Cis[2]-His[2] zinc finger domains. It functions as an RNA polymerase III transcription factor to induce transcription of the 5S rRNA genes. The protein binds to a 50 bp internal promoter in the 5S genes called the internal control region (ICR), and nucleates formation of a stable preinitiation complex. This complex recruits the TFIIIC and TFIIIB transcription factors and RNA polymerase III to form the complete transcription complex. The protein is thought to be translated using a non-AUG translation initiation site in mammals based on sequence analysis, protein homology, and the size of the purified protein.

抗原: Synthetic peptide of human GTF3A

经过测试的应用: ELISA, WB, IHC

推荐稀释比: IHC: 50-300;WB: 500-2000;ELISA: 5000-10000

种属反应性: Rabbit

克隆性: Rabbit Polyclonal

亚型: Immunogen-specific rabbit IgG

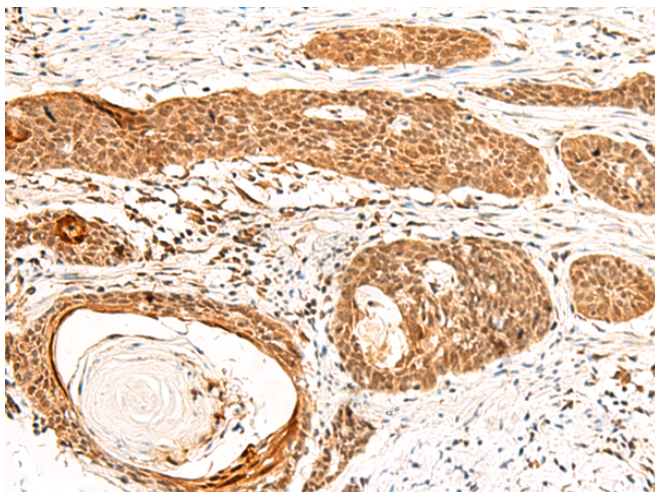
纯化: Antigen affinity purification

种属反应性: Human, Mouse, Rat

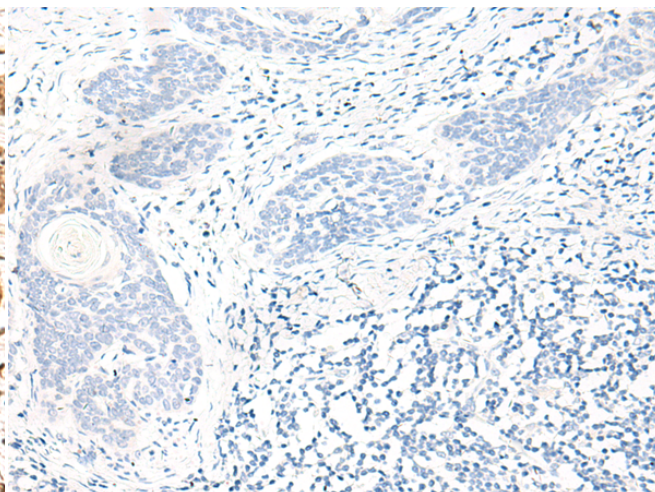
成分: PBS (without Mg²⁺ and Ca²⁺), pH 7.4, 150 mM NaCl, 0.05% Sodium Azide and 40% glycerol

研究领域: Epigenetics and Nuclear Signaling

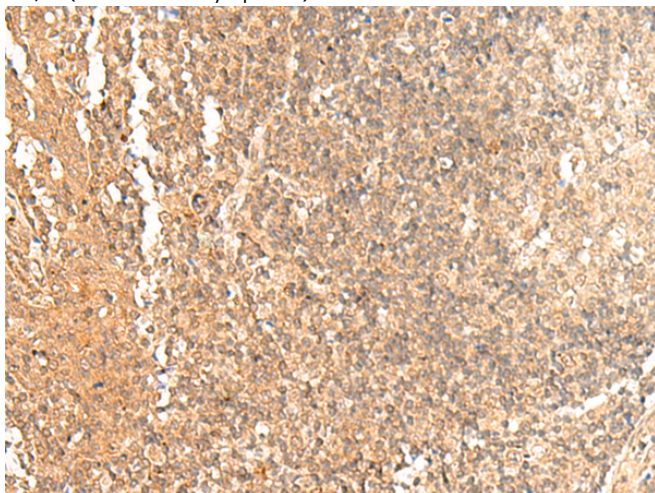
储存和运输: Store at -20°C. Avoid repeated freezing and thawing



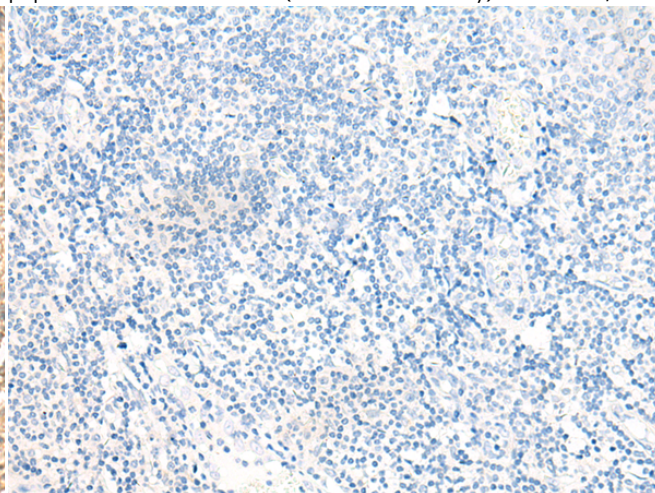
Immunohistochemistry analysis of paraffin embedded Human esophagus cancer tissue using 222152(GTF3A Antibody) at a dilution of 1/60(Nucleus and Cytoplasm).



In comparison with the IHC on the left, the same paraffin-embedded Human esophagus cancer tissue is first treated with the synthetic peptide and then with 222152(Anti-GTF3A Antibody) at dilution 1/60.

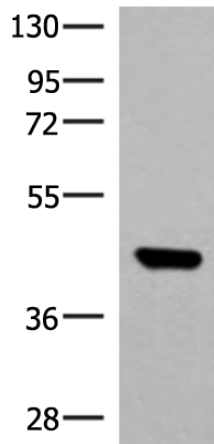


The image on the left is immunohistochemistry of paraffin-embedded Human tonsil tissue using 222152(Anti-GTF3A Antibody) at a dilution of 1/60.



In comparison with the IHC on the left, the same paraffin-embedded Human tonsil tissue is first treated with synthetic peptide and then with D264139(Anti-GTF3A Antibody) at dilution 1/60.

kDa



Gel: 8%SDS-PAGE, Lysate: 40 µg;

Lane: TM4 cell lysate;

Primary antibody: 222152(GTF3A Antibody) at dilution 1/550;

Secondary antibody: Goat anti rabbit IgG at 1/8000 dilution;

Exposure time: 7 seconds



Product Description

Pioneering GTPase and Oncogene Product Development since 2010
