

## GSTZ1 RABBIT PAB

货号: S218841

产品全名: GSTZ1 兔多抗

基因符号: MAI; MAAI; MAAID; GSTZ1-1

**UNIPROT ID:** O43708 (Gene Accession - BC001453)

**背景:** This gene is a member of the glutathione S-transferase (GSTs) super-family which encodes multifunctional enzymes important in the detoxification of electrophilic molecules, including carcinogens, mutagens, and several therapeutic drugs, by conjugation with glutathione. This enzyme catalyzes the conversion of maleylacetoacetate to fumarylacetoacetate, which is one of the steps in the phenylalanine/tyrosine degradation pathway. Deficiency of a similar gene in mouse causes oxidative stress. Several transcript variants of this gene encode multiple protein isoforms.

**抗原:** Fusion protein of human GSTZ1

**经过测试的应用:** ELISA, WB, IHC

**推荐稀释比:** IHC: 100-300;WB: 1000-5000;ELISA: 5000-10000

**种属反应性:** Rabbit

**克隆性:** Rabbit Polyclonal

**亚型:** Immunogen-specific rabbit IgG

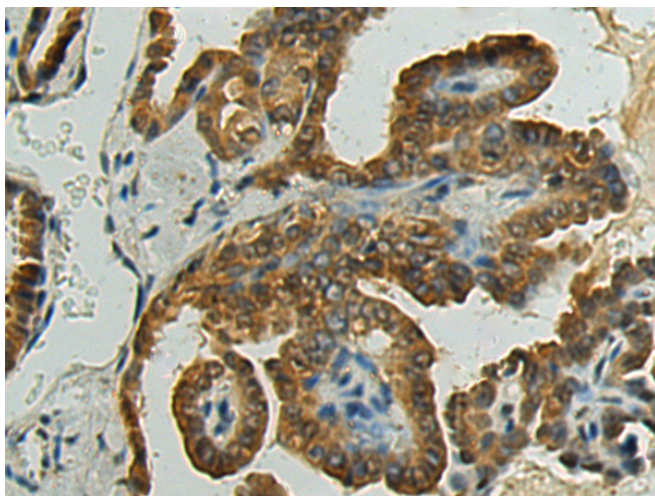
**纯化:** Antigen affinity purification

**种属反应性:** Human, Mouse, Rat

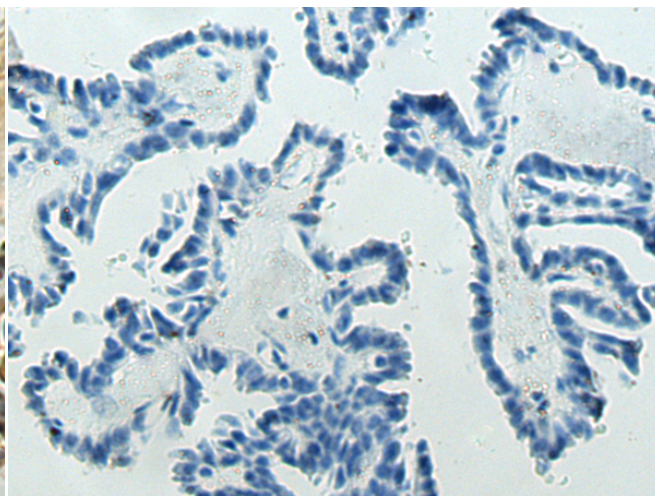
**成分:** PBS (without Mg<sup>2+</sup> and Ca<sup>2+</sup>), pH 7.4, 150 mM NaCl, 0.05% Sodium Azide and 40% glycerol

**研究领域:** Metabolism

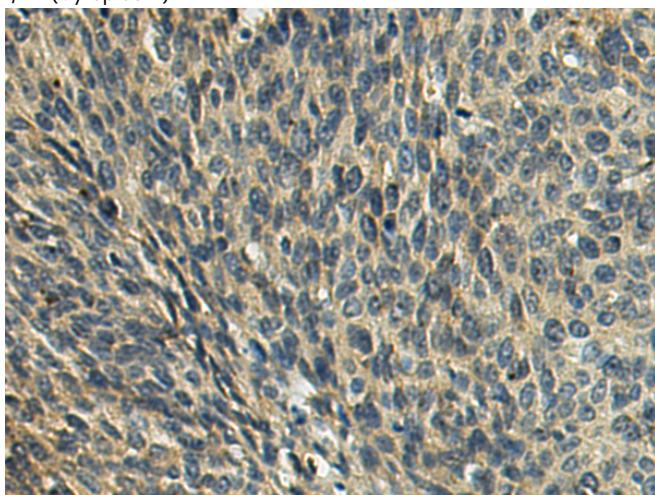
**储存和运输:** Store at -20°C. Avoid repeated freezing and thawing



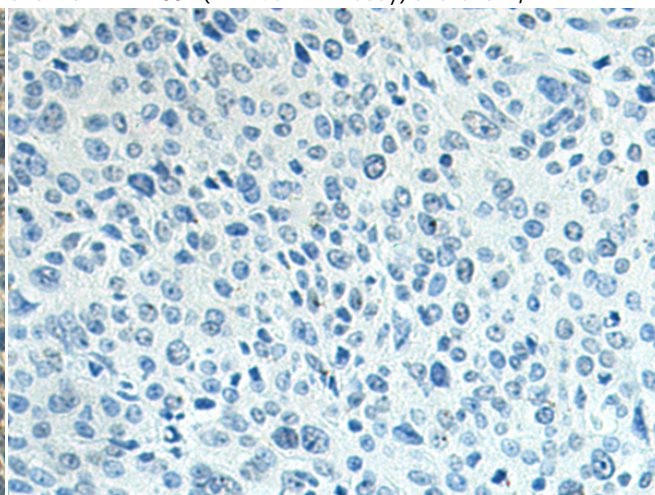
Immunohistochemistry analysis of paraffin embedded Human thyroid cancer tissue using 218841(GSTZ1 Antibody) at a dilution of 1/100(Cytoplasm).



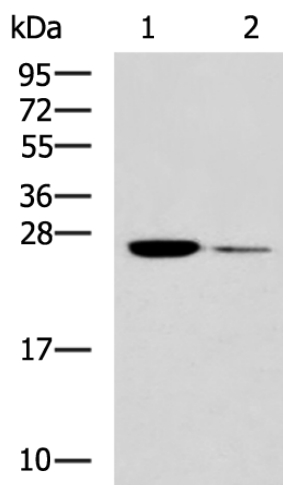
In comparison with the IHC on the left, the same paraffin-embedded Human thyroid cancer tissue is first treated with the fusion protein and then with 218841(Anti-GSTZ1 Antibody) at dilution 1/100.



The image on the left is immunohistochemistry of paraffin-embedded Human cervical cancer tissue using 218841(Anti-GSTZ1 Antibody) at a dilution of 1/100.



In comparison with the IHC on the left, the same paraffin-embedded Human cervical cancer tissue is first treated with fusion protein and then with D225326(Anti-GSTZ1 Antibody) at dilution 1/100.



Gel: 12%SDS-PAGE, Lysate: 40 µg;  
 Lane 1-2: Mouse liver tissue and HepG2 cell lysates;  
 Primary antibody: 218841(GSTZ1 Antibody) at dilution 1/1200;  
 Secondary antibody: HRP-conjugated Goat anti rabbit IgG at 1/5000 dilution;  
 Exposure time: 1 minute



# Product Description

Pioneering GTPase and Oncogene Product Development since 2010

---