

## GSTM5 RABBIT PAB

货号: S219447

产品全名: GSTM5 兔多抗

基因符号: GTM5; GSTM5-5

**UNIPROT ID:** P46439 (Gene Accession - BC058881)

**背景:** Cytosolic and membrane-bound forms of glutathione S-transferase are encoded by two distinct supergene families. At present, eight distinct classes of the soluble cytoplasmic mammalian glutathione S-transferases have been identified: alpha, kappa, mu, omega, pi, sigma, theta and zeta. This gene encodes a glutathione S-transferase that belongs to the mu class. The mu class of enzymes functions in the detoxification of electrophilic compounds, including carcinogens, therapeutic drugs, environmental toxins and products of oxidative stress, by conjugation with glutathione. The genes encoding the mu class of enzymes are organized in a gene cluster on chromosome 1p13.3 and are known to be highly polymorphic. These genetic variations can change an individual's susceptibility to carcinogens and toxins as well as affect the toxicity and efficacy of certain drugs. Diversification of these genes has occurred in regions encoding substrate-binding domains, as well as in tissue expression patterns, to accommodate an increasing number of foreign compounds.

**抗原:** Fusion protein of human GSTM5

**经过测试的应用:** ELISA, WB, IHC

**推荐稀释比:** IHC: 50-200; WB: 500-2000; ELISA: 5000-10000

**种属反应性:** Rabbit

**克隆性:** Rabbit Polyclonal

**亚型:** Immunogen-specific rabbit IgG

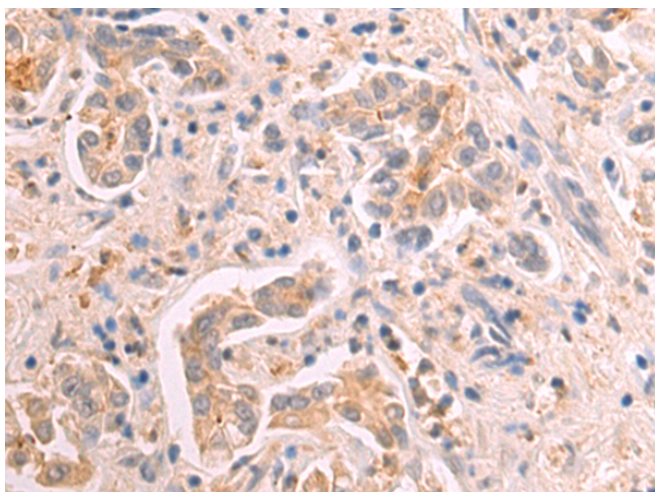
**纯化:** Antigen affinity purification

**种属反应性:** Human, Mouse

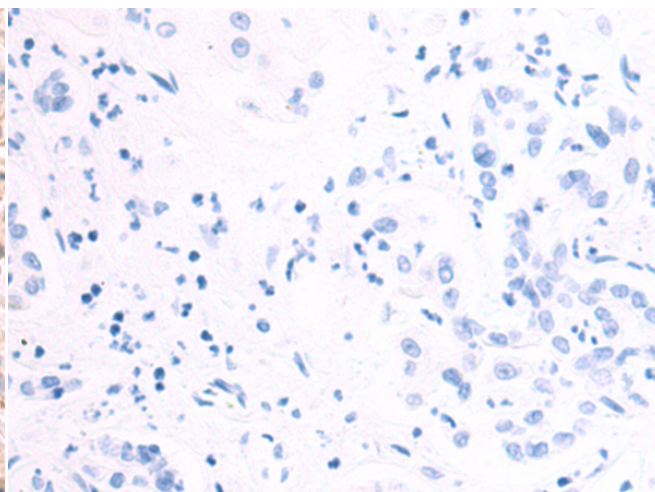
**成分:** PBS (without Mg<sup>2+</sup> and Ca<sup>2+</sup>), pH 7.4, 150 mM NaCl, 0.05% Sodium Azide and 40% glycerol

**研究领域:** Signal Transduction, Metabolism

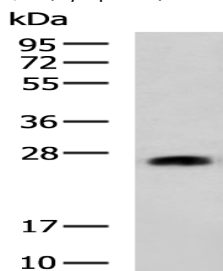
**储存和运输:** Store at -20°C. Avoid repeated freezing and thawing



Immunohistochemistry analysis of paraffin embedded Human liver cancer tissue using 219447 (GSTM5 Antibody) at a dilution of 1/80 (Cytoplasm).



In comparison with the IHC on the left, the same paraffin-embedded Human liver cancer tissue is first treated with the fusion protein and then with 219447 (Anti-GSTM5 Antibody) at dilution 1/80.



Gel: 12% SDS-PAGE, Lysate: 40 µg;  
Lane: Mouse testis tissue lysate;  
Primary antibody: 219447 (GSTM5 Antibody) at dilution 1/700;  
Secondary antibody: HRP-conjugated Goat anti rabbit IgG at 1/5000 dilution;  
Exposure time: 90 seconds



# Product Description

Pioneering GTPase and Oncogene Product Development since 2010

---