

GSTCD RABBIT PAB

货号: S219163

产品全名: GSTCD 兔多抗

基因符号

UNIPROT ID: Q8NEC7 (Gene Accession - BC032942)

背景: The function of this protein remains unknown.

抗原: Fusion protein of human GSTCD

经过测试的应用: ELISA, WB, IHC

推荐稀释比: IHC: 70-350;WB: 500-2000;ELISA: 5000-10000

种属反应性: Rabbit

克隆性: Rabbit Polyclonal

亚型: Immunogen-specific rabbit IgG

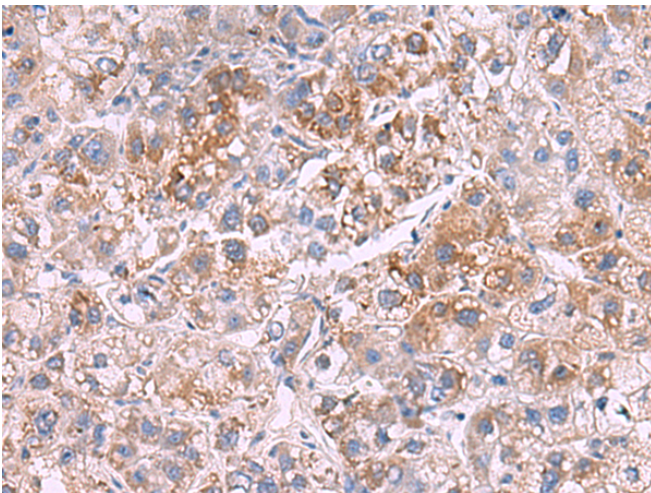
纯化: Antigen affinity purification

种属反应性: Human

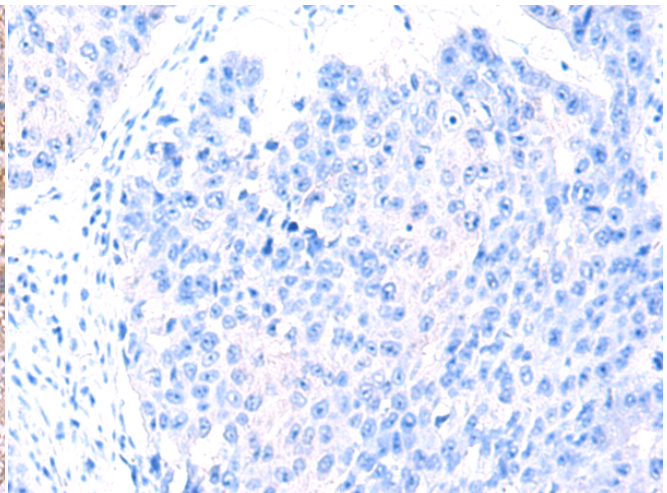
成分: PBS (without Mg²⁺ and Ca²⁺), pH 7.4, 150 mM NaCl, 0.05% Sodium Azide and 40% glycerol

研究领域: Cell Biology

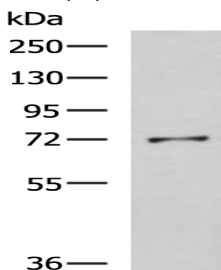
储存和运输: Store at -20°C. Avoid repeated freezing and thawing



Immunohistochemistry analysis of paraffin embedded Human liver cancer tissue using 219163 (GSTCD Antibody) at a dilution of 1/70 (Cytoplasm).



In comparison with the IHC on the left, the same paraffin-embedded Human liver cancer tissue is first treated with the fusion protein and then with 219163 (Anti-GSTCD Antibody) at dilution 1/70.



Gel: 8%SDS-PAGE, Lysate: 40 µg;

Lane: K562 cell lysate;

Primary antibody: 219163 (GSTCD Antibody) at dilution 1/800;

Secondary antibody: HRP-conjugated Goat anti rabbit IgG at 1/5000 dilution;

Exposure time: 5 minutes