

GSPT1 RABBIT PAB

货号: S221978

产品全名: GSPT1 兔多抗

基因符号: GST1; ETF3A; eRF3a; 551G9.2

UNIPROT ID: P15170 (Gene Accession - NP_001123478)

背景: Involved in translation termination in response to the termination codons UAA, UAG and UGA. Stimulates the activity of ERF1. Involved in regulation of mammalian cell growth. Component of the transient SURF complex which recruits UPFI to stalled ribosomes in the context of nonsense-mediated decay (NMD) of mRNAs containing premature stop codons.

抗原: Synthetic peptide of human GSPT1

经过测试的应用: ELISA, IHC

推荐稀释比: IHC: 25-50; ELISA: 5000-10000

种属反应性: Rabbit

克隆性: Rabbit Polyclonal

亚型: Immunogen-specific rabbit IgG

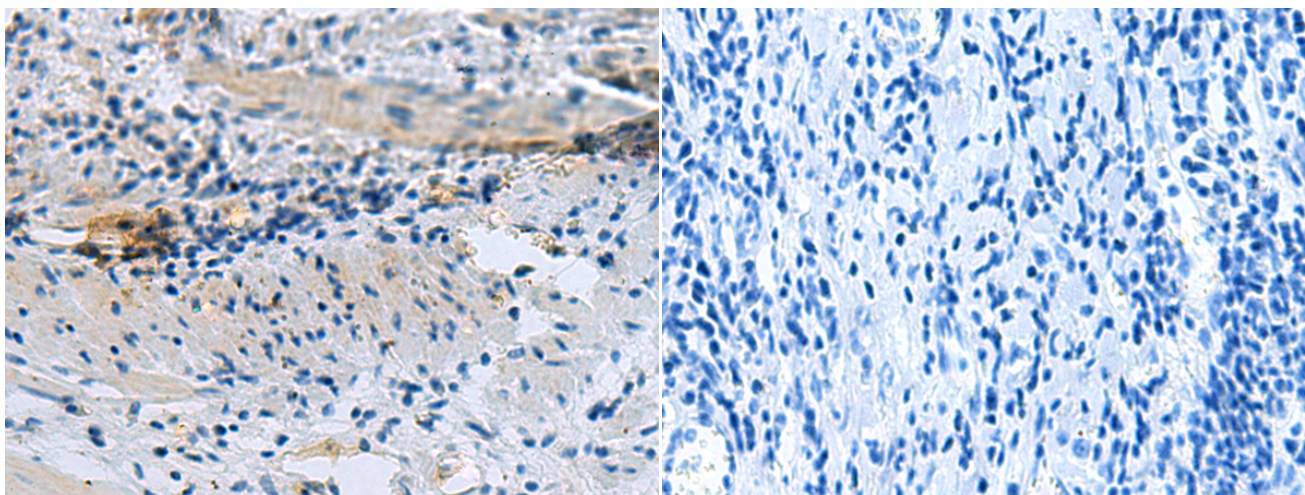
纯化: Antigen affinity purification

种属反应性: Human, Mouse

成分: PBS (without Mg²⁺ and Ca²⁺), pH 7.4, 150 mM NaCl, 0.05% Sodium Azide and 40% glycerol

研究领域: Epigenetics and Nuclear Signaling

储存和运输: Store at -20°C. Avoid repeated freezing and thawing



Immunohistochemistry analysis of paraffin embedded Human gastric cancer tissue using 221978(GSPT1 Antibody) at a dilution of 1/20(Cytoplasm).

In comparison with the IHC on the left, the same paraffin-embedded Human gastric cancer tissue is first treated with the synthetic peptide and then with 221978(Anti-GSPT1 Antibody) at dilution 1/20.