

GSK3 ALPHA RABBIT MAB

货号: N262307

产品全名: GSK3 alpha 兔单克隆抗体

基因符号 Serine/threonine-protein kinase GSK3A

UNIPROT ID: P49840

背景: GSK3A a proline-directed protein kinase of the GSK family. Implicated in the control of several regulatory proteins including glycogen synthase, Myb, and c-Jun. GSK3 and GSK3 have similar functions. GSK3 phosphorylates tau, the principal component of neurofibrillary tangles in Alzheimer disease and is required for maximal production of amyloid plaque peptides by secretase.

抗原: A synthetic peptide of human GSK3 alpha

经过测试的应用: WB, ICC/IF, IP

推荐稀释比: WB: 1/500-1/1000 IF: 1/50-1/200 IP: 1/20

种属反应性: Rabbit

克隆性: Rabbit Monoclonal

克隆编号: R07-3A2

分子量: Calculated MW: 51 kDa; Observed MW: 51 kDa

亚型: IgG

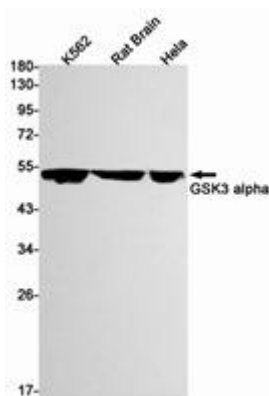
纯化: Affinity Purified

种属反应性: Human, Mouse and Rat

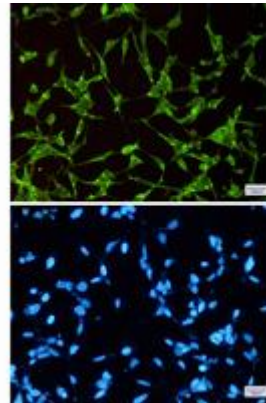
成分: PBS (without Mg²⁺ and Ca²⁺), pH 7.3 containing 50% glycerol, 0.5% BSA and 0.02% sodium azide

研究领域: Neuroscience

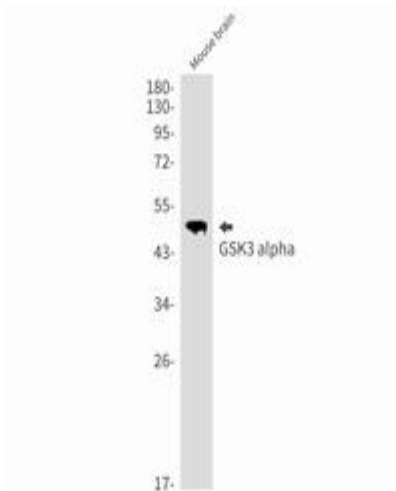
储存和运输: Store at -20°C. Avoid repeated freezing and thawing



Western blot analysis of GSK3 alpha in K562, rat Brain, Hela lysates using GSK3 alpha antibody



Immunocytochemistry analysis of GSK3 alpha (green) in 293t using GSK3 alpha antibody, and DAPI (blue).



Western blot analysis of GSK3 alpha in mouse brain lysates using GSK3 alpha antibody.