

GSG1L RABBIT PAB

货号: S218988

产品全名: GSG1L 兔多抗

基因符号: PRO19651

UNIPROT ID: Q6UXU4 (Gene Accession - BC016460)

背景: As a component of the inner core of AMPAR complex, modifies AMPA receptor (AMPA) gating.

抗原: Fusion protein of human GSG1L

经过测试的应用: ELISA, IHC

推荐稀释比: IHC: 50-300; ELISA: 5000-10000

种属反应性: Rabbit

克隆性: Rabbit Polyclonal

亚型: Immunogen-specific rabbit IgG

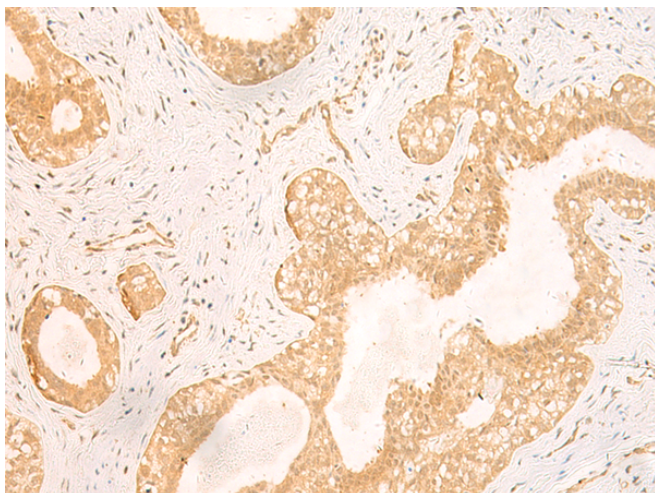
纯化: Antigen affinity purification

种属反应性: Human, Mouse, Rat

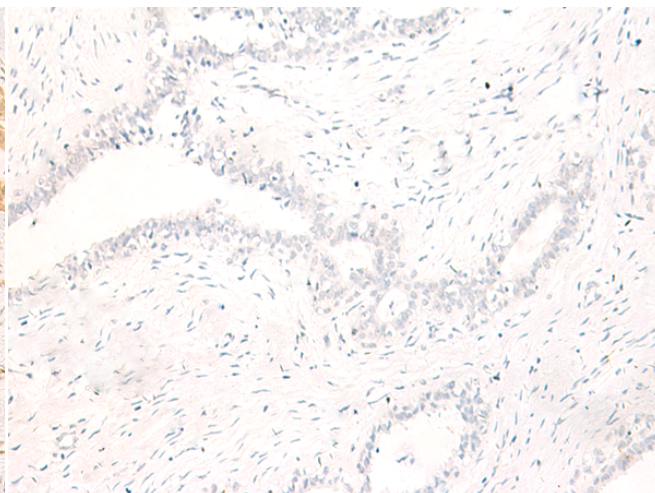
成分: PBS (without Mg²⁺ and Ca²⁺), pH 7.4, 150 mM NaCl, 0.05% Sodium Azide and 40% glycerol

研究领域: Cell Biology

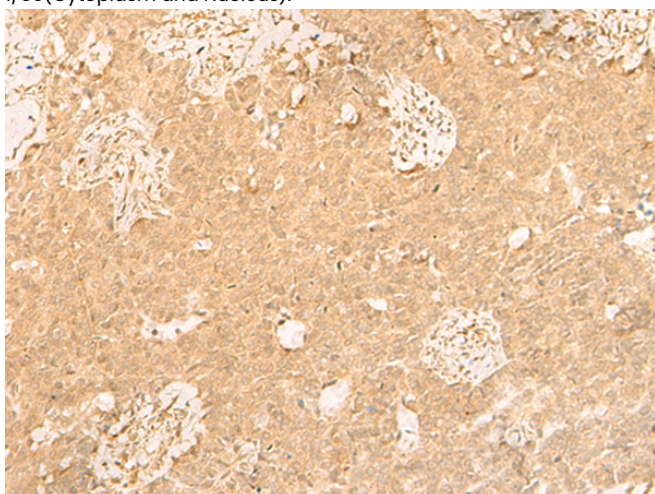
储存和运输: Store at -20°C. Avoid repeated freezing and thawing



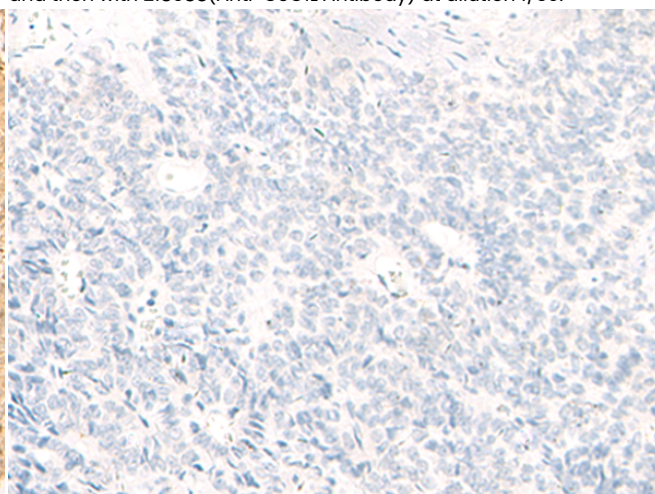
Immunohistochemistry analysis of paraffin embedded Human breast cancer tissue using 218988 (GSG1L Antibody) at a dilution of 1/50 (Cytoplasm and Nucleus).



In comparison with the IHC on the left, the same paraffin-embedded Human breast cancer tissue is first treated with the fusion protein and then with 218988 (Anti-GSG1L Antibody) at dilution 1/50.



The image on the left is immunohistochemistry of paraffin-embedded Human ovarian cancer tissue using 218988 (Anti-GSG1L Antibody) at a dilution of 1/50.



In comparison with the IHC on the left, the same paraffin-embedded Human ovarian cancer tissue is first treated with fusion protein and then with D225611 (Anti-GSG1L Antibody) at dilution 1/50.



Product Description

Pioneering GTPase and Oncogene Product Development since 2010
