

GSDMA RABBIT PAB

货号: S219464

产品全名: GSDMA 兔多抗

基因符号: GSDM; FKSG9; GSDM1

UNIPROT ID: Q96QA5 (Gene Accession - BC109197)

背景: May promote pyroptosis (Probable). Upon cleavage in vitro of genetically engineered GSDMA, the released N-terminal moiety binds to some types of lipids, such as possibly phosphatidylinositol (4,5)-bisphosphate. Homooligomerizes within the membrane and forms pores of 10-15 nanometers (nm) of inner diameter, triggering cell death. Also binds to bacterial and mitochondrial lipids, including cardiolipin, and exhibits bactericidal activity (PubMed:27281216). The physiological relevance of these observations is unknown (Probable).

抗原: Fusion protein of human GSDMA

经过测试的应用: ELISA, WB, IHC

推荐稀释比: IHC: 150-300; WB: 500-2000; ELISA: 5000-10000

种属反应性: Rabbit

克隆性: Rabbit Polyclonal

亚型: Immunogen-specific rabbit IgG

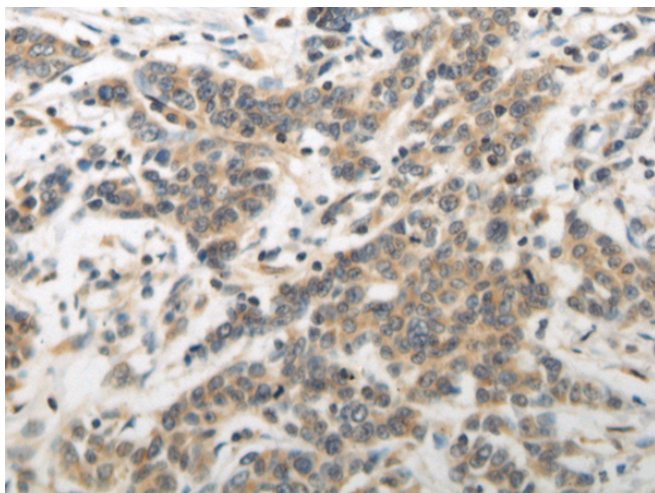
纯化: Antigen affinity purification

种属反应性: Human, Mouse

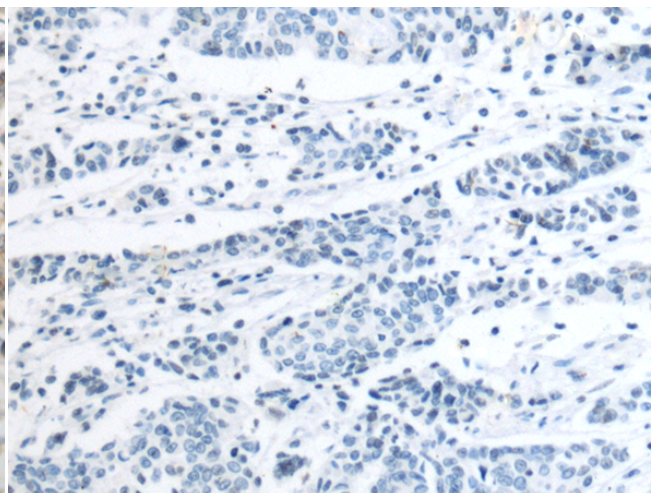
成分: PBS (without Mg²⁺ and Ca²⁺), pH 7.4, 150 mM NaCl, 0.05% Sodium Azide and 40% glycerol

研究领域: Cancer

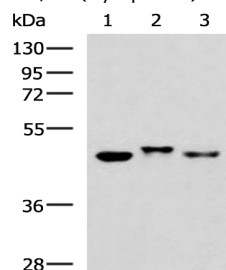
储存和运输: Store at -20°C. Avoid repeated freezing and thawing



Immunohistochemistry analysis of paraffin embedded Human colorectal cancer tissue using 219464(GSDMA Antibody) at a dilution of 1/150(Cytoplasm).



In comparison with the IHC on the left, the same paraffin-embedded Human colorectal cancer tissue is first treated with the fusion protein and then with 219464(Anti-GSDMA Antibody) at dilution 1/150.



Gel: 8%SDS-PAGE, Lysate: 40 µg;

Lane 1-3: 293T, HeLa and LO2 cell lysates;

Primary antibody: 219464(GSDMA Antibody) at dilution 1/800;

Secondary antibody: HRP-conjugated Goat anti rabbit IgG at 1/5000 dilution;

Exposure time: 1 minute