

GRWD1 RABBIT PAB

货号: S218702

产品全名: GRWD1 兔多抗

基因符号: CDW4; GRWD; RRB1; WDR28

UNIPROT ID: Q9BQ67 (Gene Accession - BC002440)

背景: This gene encodes a glutamate-rich protein that contains five WD-repeat motifs. The encoded protein may play a critical role in ribosome biogenesis and may also play a role in histone methylation through interactions with CUL4-DBP1 ubiquitin E3 ligase.

抗原: Fusion protein of human GRWD1

经过测试的应用: ELISA, IHC

推荐稀释比: IHC: 50-200; ELISA: 5000-10000

种属反应性: Rabbit

克隆性: Rabbit Polyclonal

亚型: Immunogen-specific rabbit IgG

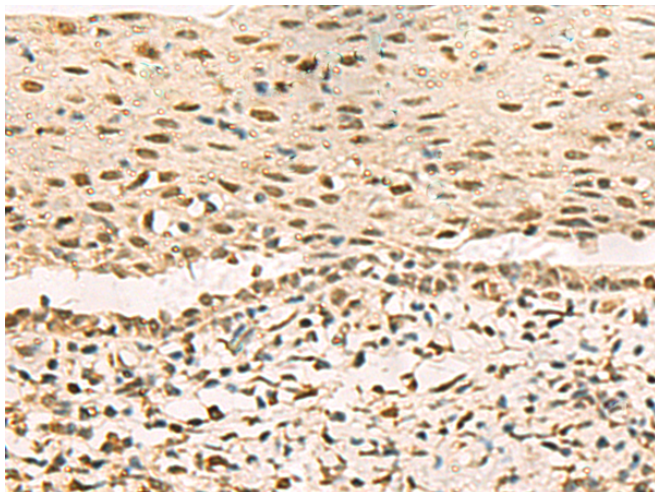
纯化: Antigen affinity purification

种属反应性: Human, Mouse, Rat

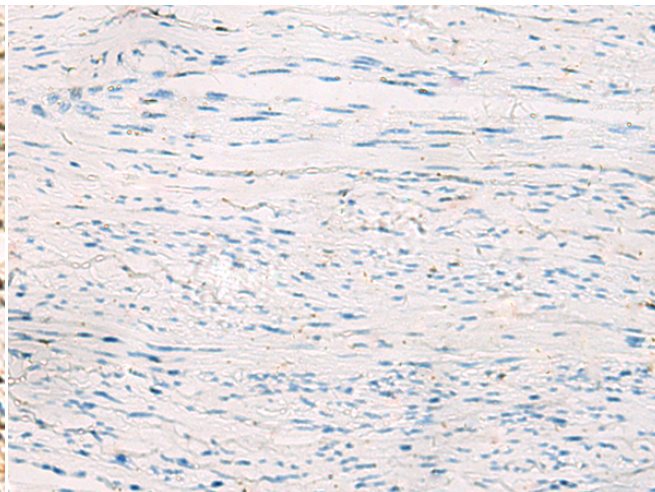
成分: PBS (without Mg²⁺ and Ca²⁺), pH 7.4, 150 mM NaCl, 0.05% Sodium Azide and 40% glycerol

研究领域: Epigenetics and Nuclear Signaling

储存和运输: Store at -20°C. Avoid repeated freezing and thawing



Immunohistochemistry analysis of paraffin embedded Human cervical cancer tissue using 218702 (GRWD1 Antibody) at a dilution of 1/90 (Nucleus).



In comparison with the IHC on the left, the same paraffin-embedded Human cervical cancer tissue is first treated with the fusion protein and then with 218702 (Anti-GRWD1 Antibody) at dilution 1/90.