

## GRSF1 RABBIT MAB

货号: N263352

产品全名: GRSF1 兔单克隆抗体

基因符号 G-rich sequence factor 1

**UNIPROT ID:** Q12849

背景: Regulator of post-transcriptional mitochondrial gene expression, required for assembly of the mitochondrial ribosome and for recruitment of mRNA and lncRNA.

抗原: A synthetic peptide of human GRSF1

经过测试的应用: WB, ICC/IF

推荐稀释比: WB: 1/500-1/1000 IF: 1/50-1/200

种属反应性: Rabbit

克隆性: Rabbit Monoclonal

克隆编号: R06-2B5

分子量: Calculated MW: 53 kDa; Observed MW: 53 kDa

亚型: IgG

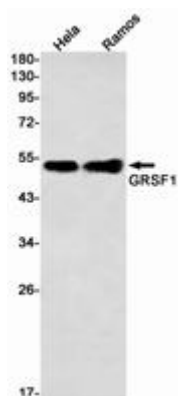
纯化: Affinity Purified

种属反应性: Human

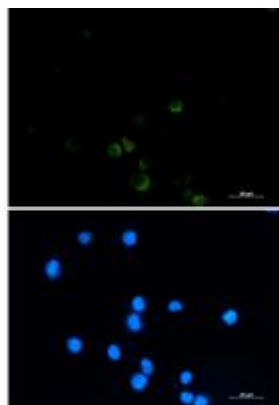
成分: PBS (without Mg<sup>2+</sup> and Ca<sup>2+</sup>), pH 7.3 containing 50% glycerol, 0.5% BSA and 0.02% sodium azide

研究领域: Epigenetics and Nuclear Signaling

储存和运输: Store at -20°C. Avoid repeated freezing and thawing



Western blot analysis of GRSF1 in HeLa, Ramos lysates using GRSF1 antibody.



Immunocytochemistry analysis of GRSF1 (green) in CEM using GRSF1 antibody, and DAPI (blue).



# Product Description

Pioneering GTPase and Oncogene Product Development since 2010

---