

GROWTH HORMONE RABBIT PAB

货号: N225049

产品全名: Growth Hormone 兔多抗

基因符号 Somatotropin (Growth hormone; GH; GH-N; Growth hormone 1; Pituitary growth hormone) Growth hormone variant (GH-V; Growth hormone 2; Placenta-specific growth hormone)

UNIPROT ID: P01241/P01242

背景: The protein encoded by this gene is a member of the somatotropin/prolactin family of hormones which play an important role in growth control.

抗原: Synthetic peptide from human protein at AA range: 180-217

经过测试的应用: IHC-P,ELISA

推荐稀释比: IHC: 1/50-1/100 ELISA: 1/10000

种属反应性: Rabbit

克隆性: Rabbit Polyclonal

分子量: -

亚型: IgG

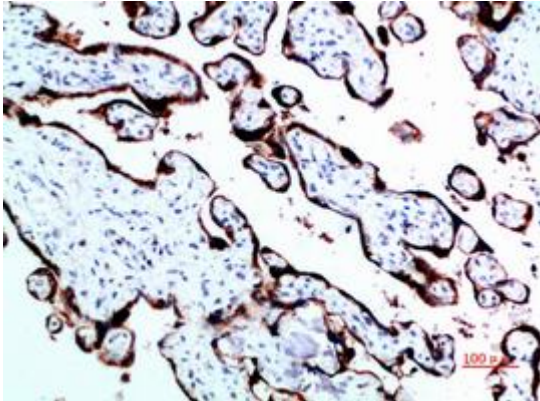
纯化: Affinity Purified

种属反应性: Human

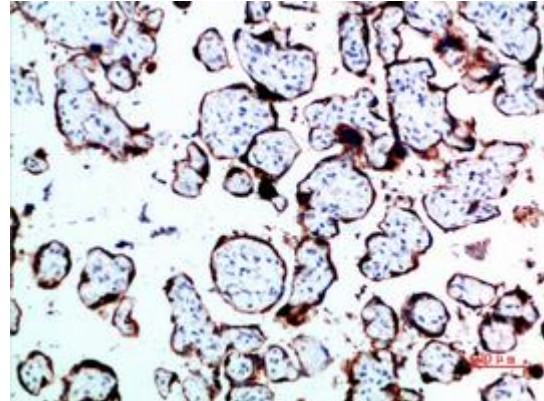
成分: PBS (without Mg²⁺ and Ca²⁺), pH 7.3 containing 50% glycerol, 0.5% BSA and 0.02% sodium azide

研究领域: Signal Transduction

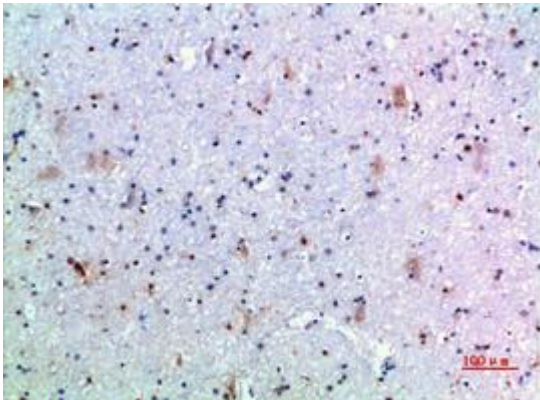
储存和运输: Store at -20°C. Avoid repeated freezing and thawing



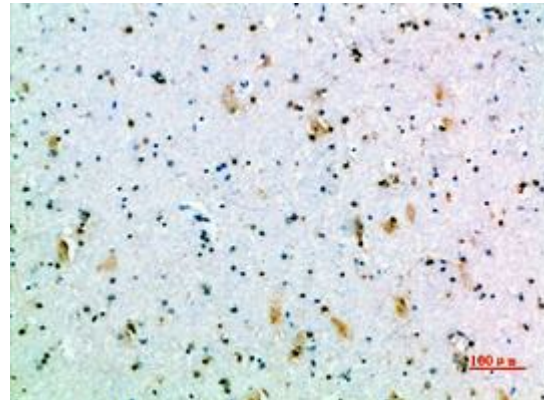
Immunohistochemical analysis of paraffin-embedded Human tonsils using Growth Hormone antibody. High-pressure and temperature Sodium Citrate pH 6.0 was used for antigen retrieval.



Immunohistochemistry analysis of paraffin-embedded Human placenta using Growth Hormone antibody. High-pressure and temperature Sodium Citrate pH 6.0 was used for antigen retrieval.



Immunohistochemistry analysis of paraffin-embedded Human brain using Growth Hormone antibody. High-pressure and temperature Sodium Citrate pH 6.0 was used for antigen retrieval.



Immunohistochemistry analysis of paraffin-embedded Human brain using Growth Hormone antibody. High-pressure and temperature Sodium Citrate pH 6.0 was used for antigen retrieval.