

GRHL1 RABBIT PAB

货号: S215914

产品全名: GRHL1 兔多抗

基因符号 MGR; NH32; LBP32; TFCP2L2

UNIPROT ID: Q9NZI5 (Gene Accession - NP_937825)

背景: This gene encodes a member of the grainyhead family of transcription factors. The encoded protein can exist as a homodimer or can form heterodimers with sister-of-mammalian grainyhead or brother-of-mammalian grainyhead. This protein functions as a transcription factor during development. [provided by RefSeq, Jun 2009]

抗原: Synthetic peptide of human GRHL1

经过测试的应用: ELISA, WB, IHC

推荐稀释比: IHC: 50-100;WB: 500-2000;ELISA: 5000-10000

种属反应性: Rabbit

克隆性: Rabbit Polyclonal

亚型: Immunogen-specific rabbit IgG

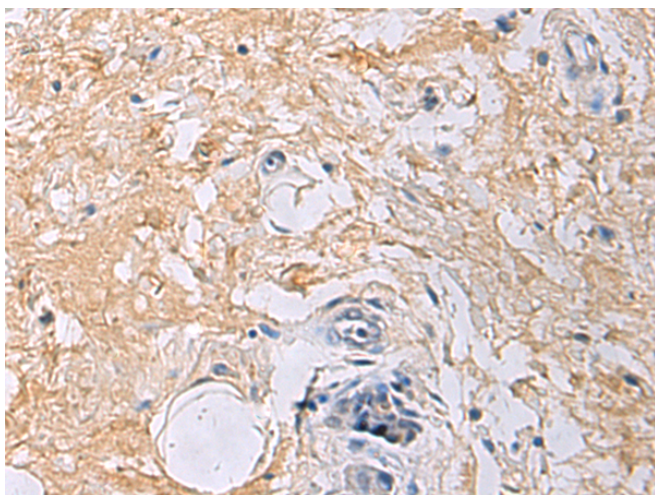
纯化: Antigen affinity purification

种属反应性: Human, Mouse

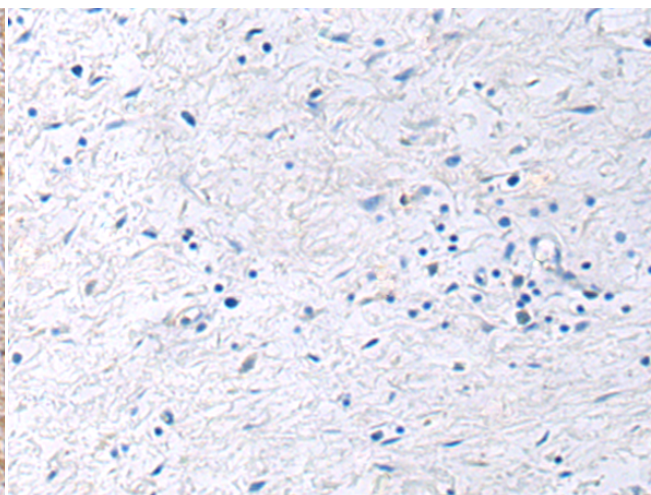
成分: PBS (without Mg²⁺ and Ca²⁺), pH 7.4, 150 mM NaCl, 0.05% Sodium Azide and 40% glycerol

研究领域: Epigenetics and Nuclear Signaling

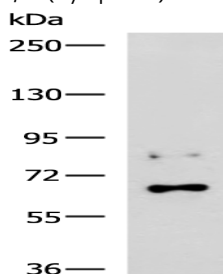
储存和运输: Store at -20°C. Avoid repeated freezing and thawing



Immunohistochemistry analysis of paraffin embedded Human gastric cancer using 215914 (GRHL1 Antibody) at a dilution of 1/45 (Cytoplasm).



In comparison with the IHC on the left, the same paraffin-embedded Human gastric cancer is first treated with the synthetic peptide and then with 215914 (Anti-GRHL1 Antibody) at dilution 1/45.



Gel: 6%SDS-PAGE, Lysate: 40 µg;

Lane: Mouse brain tissue lysate;

Primary antibody: 215914 (GRHL1 Antibody) at dilution 1/650;

Secondary antibody: HRP-conjugated Goat anti rabbit IgG at 1/5000 dilution;

Exposure time: 3 minutes