

GRANZYME B RABBIT PAB

货号: N225242

产品全名: Granzyme B 兔多抗

基因符号 Granzyme B; Cathepsin G-like 1; CTSGLI; Lymphocyte protease; Fragmentin-2; Granzyme-2; Human lymphocyte protein; SECT; GZMB; CGLI; CSPB; CTLAI; GRB

UNIPROT ID: P10144

背景: This enzyme is necessary for target cell lysis in cell-mediated immune responses. It cleaves after Asp. Seems to be linked to an activation cascade of caspases (aspartate-specific cysteine proteases) responsible for apoptosis execution. Cleaves caspase-3, -7, -9 and 10 to give rise to active enzymes mediating apoptosis.

抗原: Synthesized peptide derived from human Granzyme B Polyclonal

经过测试的应用: WB,IHC-P,ELISA

推荐稀释比: WB: 1/500-1/1000 IHC: 1/50-1/100 ELISA: 1/10000

种属反应性: Rabbit

克隆性: Rabbit Polyclonal

分子量: Calculated MW: 28 kDa; Observed MW: 40 kDa

亚型: IgG

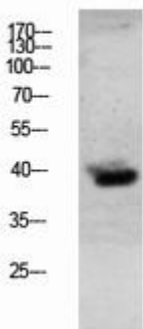
纯化: Affinity Purified

种属反应性: Human, Mouse and Rat

成分: PBS (without Mg²⁺ and Ca²⁺), pH 7.3 containing 50% glycerol, 0.5% BSA and 0.02% sodium azide

研究领域: Cell Biology

储存和运输: Store at -20°C. Avoid repeated freezing and thawing



Western blot analysis of Granzyme B in mouse lung lysates using Granzyme B antibody.



Product Description

Pioneering GTPase and Oncogene Product Development since 2010
