

## GRAMD2A RABBIT PAB

货号: S215915

产品全名: GRAMD2A 兔多抗

基因符号: GRAMD2

**UNIPROT ID:** Q8IU Y3 (Gene Accession - NP\_001012660)

**背景:** Participates in the organization of endoplasmic reticulum-plasma membrane contact sites (EPCS) with pleiotropic functions including STIM1 recruitment and calcium homeostasis. Constitutive tether that co-localize with ESYT2/3 tethers at endoplasmic reticulum-plasma membrane contact sites in a phosphatidylinositol lipid-dependent manner. Pre-marks the subset of phosphatidylinositol 4,5-bisphosphate (PI(4,5)P<sub>2</sub>)-enriched EPCS destined for the store operated calcium entry pathway (SOCE).

**抗原:** Synthetic peptide of human GRAMD2A

**经过测试的应用:** ELISA, IHC

**推荐稀释比:** IHC: 25-50; ELISA: 5000-10000

**种属反应性:** Rabbit

**克隆性:** Rabbit Polyclonal

**亚型:** Immunogen-specific rabbit IgG

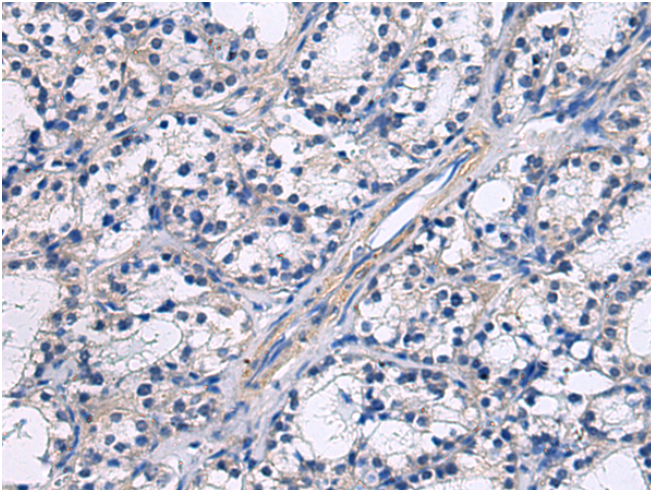
**纯化:** Antigen affinity purification

**种属反应性:** Human

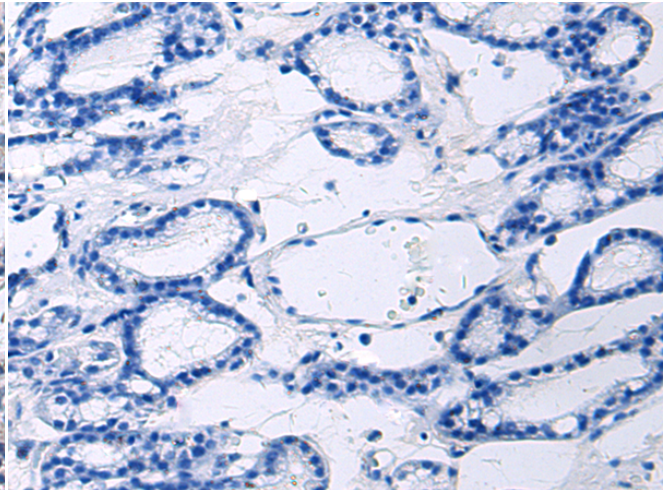
**成分:** PBS (without Mg<sup>2+</sup> and Ca<sup>2+</sup>), pH 7.4, 150 mM NaCl, 0.05% Sodium Azide and 40% glycerol

**研究领域:** Cell Biology

**储存和运输:** Store at -20°C. Avoid repeated freezing and thawing



Immunohistochemistry analysis of paraffin embedded Human thyroid cancer using 215915 (GRAMD2A Antibody) at a dilution of 1/45 (Cytoplasm).



In comparison with the IHC on the left, the same paraffin-embedded Human thyroid cancer is first treated with the synthetic peptide and then with 215915 (Anti-GRAMD2A Antibody) at dilution 1/45.