

## GPSM1 RABBIT PAB

货号: S218881

产品全名: GPSM1 兔多抗

基因符号: AGS3

**UNIPROT ID:** Q86YR5 (Gene Accession - BC009979)

**背景:** G-protein signaling modulators (GPSMs) play diverse functional roles through their interaction with G-protein subunits. This gene encodes a receptor-independent activator of G protein signaling, which is one of several factors that influence the basal activity of G-protein signaling systems. The protein contains seven tetratricopeptide repeats in its N-terminal half and four G-protein regulatory (GPR) motifs in its C-terminal half. Multiple alternatively spliced transcript variants encoding different isoforms have been found for this gene.

**抗原:** Fusion protein of human GPSM1

**经过测试的应用:** ELISA, IHC

**推荐稀释比:** IHC: 40-200; ELISA: 5000-10000

**种属反应性:** Rabbit

**克隆性:** Rabbit Polyclonal

**亚型:** Immunogen-specific rabbit IgG

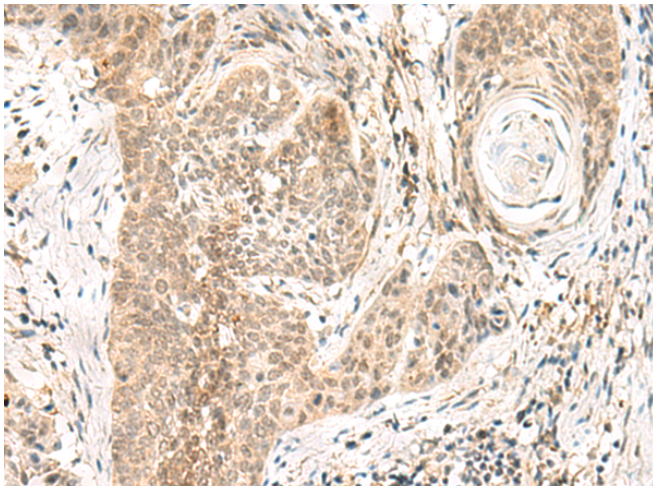
**纯化:** Antigen affinity purification

**种属反应性:** Human, Mouse, Rat

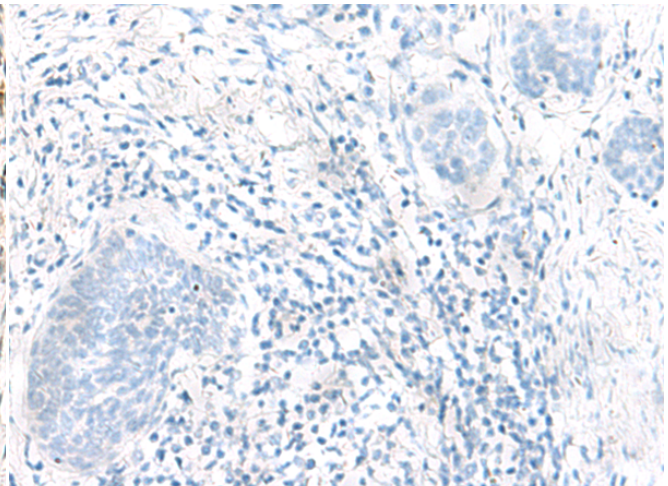
**成分:** PBS (without Mg<sup>2+</sup> and Ca<sup>2+</sup>), pH 7.4, 150 mM NaCl, 0.05% Sodium Azide and 40% glycerol

**研究领域:** Signal Transduction, Cancer, Developmental Biology

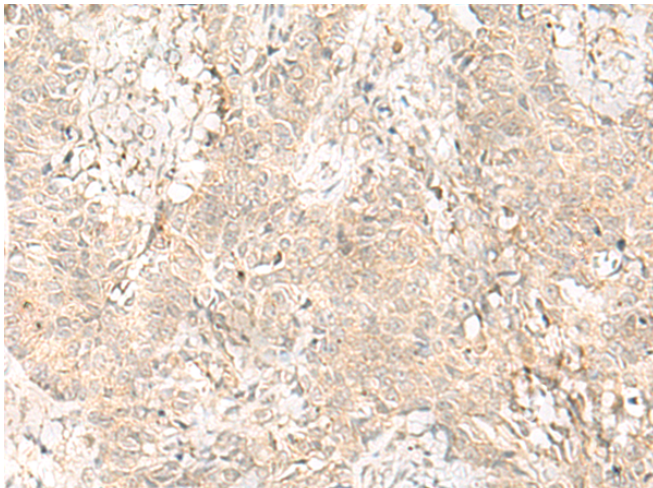
**储存和运输:** Store at -20°C. Avoid repeated freezing and thawing



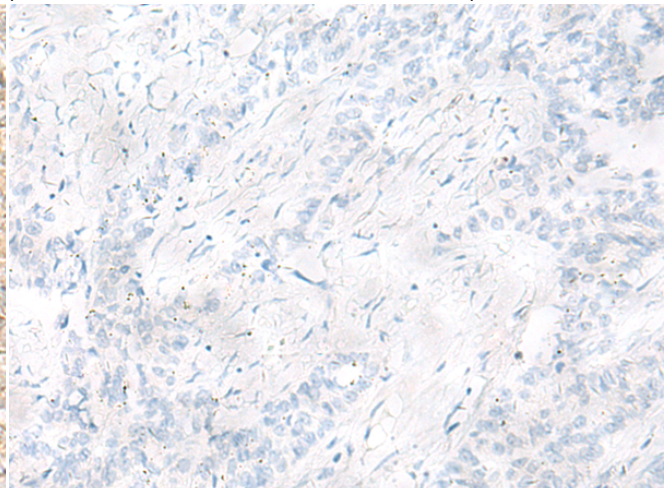
Immunohistochemistry analysis of paraffin embedded Human esophagus cancer tissue using 218881(GPSM1 Antibody) at a dilution of 1/55(Nucleus).



In comparison with the IHC on the left, the same paraffin-embedded Human esophagus cancer tissue is first treated with the fusion protein and then with 218881(Anti-GPSM1 Antibody) at dilution 1/55.



The image on the left is immunohistochemistry of paraffin-embedded Human ovarian cancer tissue using 218881(Anti-GPSM1 Antibody) at a dilution of 1/55.



In comparison with the IHC on the left, the same paraffin-embedded Human ovarian cancer tissue is first treated with fusion protein and then with D225430(Anti-GPSM1 Antibody) at dilution 1/55.



# Product Description

Pioneering GTPase and Oncogene Product Development since 2010

---