

## GPRC5B RABBIT MAB

货号: N262302

产品全名: GPRC5B 兔单克隆抗体

基因符号 RAIG2; RAIG-2

**UNIPROT ID:** Q9NZH0

背景: G-protein coupled receptor family C group 5 member B

抗原: A synthetic peptide of human GPRC5B

经过测试的应用: WB,IP

推荐稀释比: WB: 1/500-1/1000 IP: 1/20

种属反应性: Rabbit

克隆性: Rabbit Monoclonal

克隆编号: R03-6B6

分子量: Calculated MW: 45 kDa; Observed MW: 45 kDa

亚型: IgG

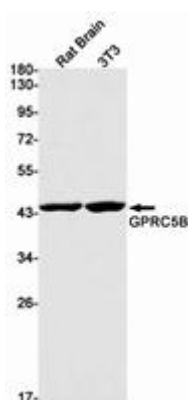
纯化: Affinity Purified

种属反应性: Human, Mouse and Rat

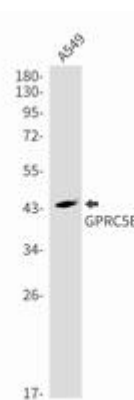
成分: PBS (without Mg<sup>2+</sup> and Ca<sup>2+</sup>), pH 7.3 containing 50% glycerol, 0.5% BSA and 0.02% sodium azide

研究领域: Neuroscience

储存和运输: Store at -20°C. Avoid repeated freezing and thawing



Western blot analysis of GPRC5B in rat Brain, 3T3 lysates using GPRC5B antibody.



Western blot analysis of GPRC5B in A549 lysates using GPRC5B antibody.