

## GPR91 RABBIT PAB

货号: N225498

产品全名: GPR91 兔多抗

基因符号 GPR91

**UNIPROT ID:** Q9BXA5

背景: Receptor for succinate.

抗原: The antiserum was produced against synthesized peptide derived from human SUCNR1. AA range:100-149

经过测试的应用: WB,ICC/IF,ELISA

推荐稀释比: WB: 1/500-1/1000 IF: 1/50-1/200 ELISA: 1/10000

种属反应性: Rabbit

克隆性: Rabbit Polyclonal

分子量: Calculated MW: 39 kDa; Observed MW: 39 kDa

亚型: IgG

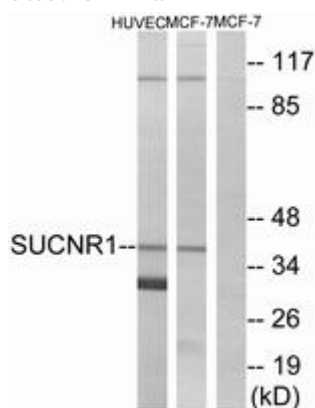
纯化: Affinity Chromatography

种属反应性: Human, Mouse and Rat

成分: PBS (without Mg<sup>2+</sup> and Ca<sup>2+</sup>), pH 7.3 containing 50% glycerol, 0.5% BSA and 0.02% sodium azide

研究领域: Signal Transduction

储存和运输: Store at -20°C. Avoid repeated freezing and thawing



Western blot analysis of GPR91 in HUVEC and MCF-7 lysates using SUCNR1 antibody. The lane on the right is blocked with the synthesized peptide.