

GPR89A/GPR89B RABBIT PAB

货号: S222140

产品全名: GPR89A/GPR89B 兔多抗

基因符号: GPHR; GPR89; SH120; GPR89B; GPR89C; UNQ192

UNIPROT ID: B7ZQA6/P0CG08 (Gene Accession - NP_057418)

背景: GPR89A is a nearly identical copy of the GPR89B gene (MIM 612806). Voltage dependent anion channel required for acidification and functions of the Golgi apparatus that may function in counter-ion conductance.

抗原: Synthetic peptide of human GPR89A/GPR89B

经过测试的应用: ELISA, WB, IHC

推荐稀释比: IHC: 20-100;WB: 200-1000;ELISA: 5000-10000

种属反应性: Rabbit

克隆性: Rabbit Polyclonal

亚型: Immunogen-specific rabbit IgG

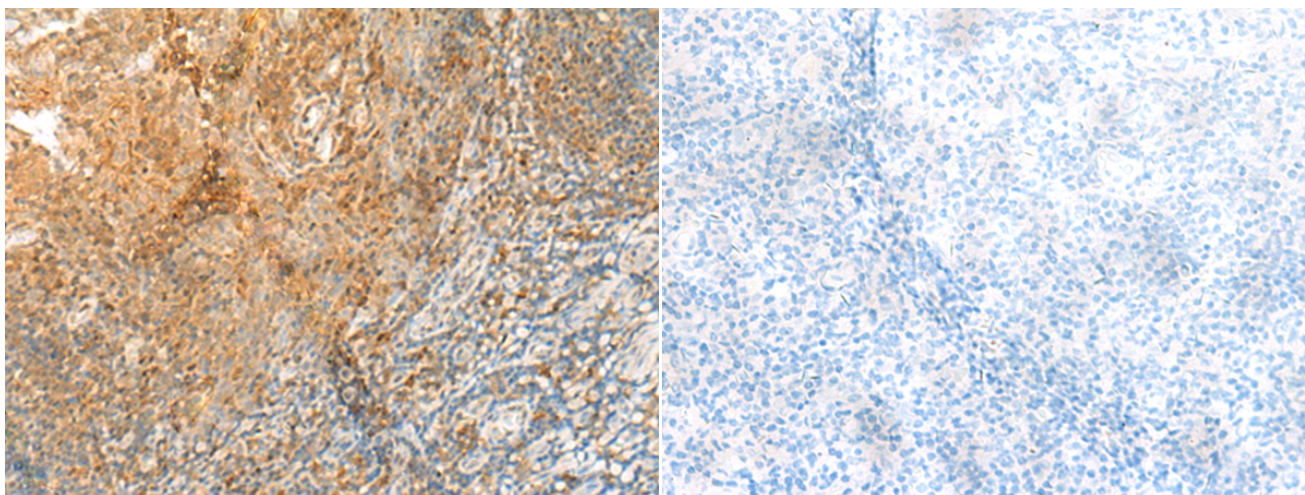
纯化: Antigen affinity purification

种属反应性: Human, Mouse

成分: PBS (without Mg²⁺ and Ca²⁺), pH 7.4, 150 mM NaCl, 0.05% Sodium Azide and 40% glycerol

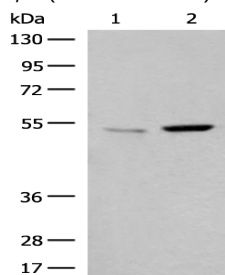
研究领域: Signal Transduction

储存和运输: Store at -20°C. Avoid repeated freezing and thawing



Immunohistochemistry analysis of paraffin embedded Human tonsil tissue using 222140(GPR89A/GPR89B Antibody) at a dilution of 1/30(Cell membrane).

In comparison with the IHC on the left, the same paraffin-embedded Human tonsil tissue is first treated with the synthetic peptide and then with 222140(Anti-GPR89A/GPR89B Antibody) at dilution 1/30.



Gel: 8%SDS-PAGE, Lysate: 40 µg;

Lane 1-2: Mouse kidney tissue and Human heart tissue lysates;
Primary antibody: 222140(GPR89A/GPR89B Antibody) at dilution 1/300;

Secondary antibody: Goat anti rabbit IgG at 1/8000 dilution;
Exposure time: 1 minute