

GPR75 RABBIT PAB

货号: N225425

产品全名: GPR75 兔多抗

基因符号 Probable G-protein coupled receptor 75

UNIPROT ID: O95800

背景: G protein-coupled receptor that is activated by the chemokine CCL5/RANTES.

抗原: The antiserum was produced against synthesized peptide derived from human GPR75.

AA range:381-430

经过测试的应用: WB,ICC/IF,ELISA

推荐稀释比: WB: 1/500-1/1000 IF: 1/50-1/200 ELISA: 1/10000

种属反应性: Rabbit

克隆性: Rabbit Polyclonal

分子量: Calculated MW: 59 kDa; Observed MW: 59 kDa

亚型: IgG

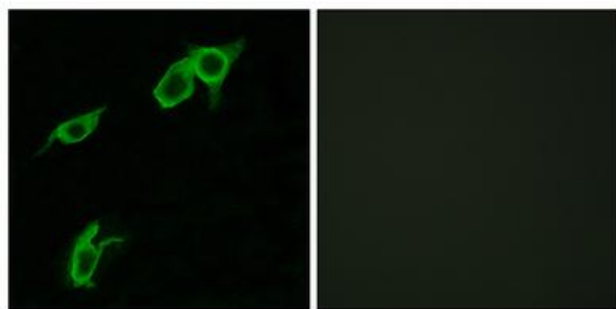
纯化: Affinity Purified

种属反应性: Human,Mouse

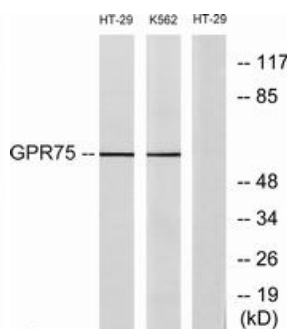
成分: PBS (without Mg²⁺ and Ca²⁺), pH 7.3 containing 50% glycerol, 0.5% BSA and 0.02% sodium azide

研究领域: Signal Transduction

储存和运输: Store at -20°C. Avoid repeated freezing and thawing



Immunofluorescence analysis of GPR75 in LOVO using GPR75 antibody. The picture on the right is blocked using the synthesized peptide.



Western blot analysis of GPR75 in HT-29 and K562 lysates using GPR75 antibody. The lane on the right is blocked with the synthesized peptide.