

GPR65 RABBIT PAB

货号: S220588

产品全名: GPR65 兔多抗

基因符号 TDAG8; hTDAG8

UNIPROT ID: Q8IYL9 (Gene Accession - NP_003599)

背景: TDAG8 (for T-cell death-associated gene 8) is a seven transmembrane G protein-coupled receptor (GPCR) that was originally identified from a human thyroid cDNA library and subsequently shown to be expressed predominantly in thymus, lymph nodes, peripheral blood leukocytes and spleen. TDAG8, which is alternatively designated GPCR25, is grouped collectively with other GPCRs that are induced during T cell receptor engagement-mediated apoptosis and T cell activation, which also include G2A (for G2 accumulation) and P2Y2 (for P2 nucleotide) receptor.

抗原: Synthetic peptide of human GPR65

经过测试的应用: ELISA, IHC

推荐稀释比: IHC: 50-200; ELISA: 2000-5000

种属反应性: Rabbit

克隆性: Rabbit Polyclonal

亚型: Immunogen-specific rabbit IgG

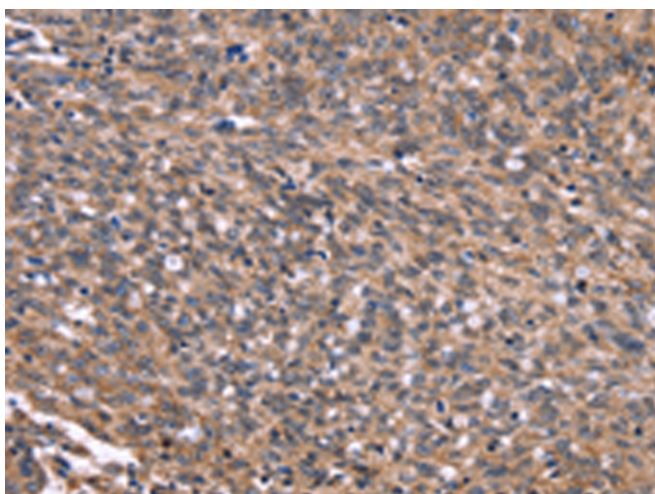
纯化: Antigen affinity purification

种属反应性: Human

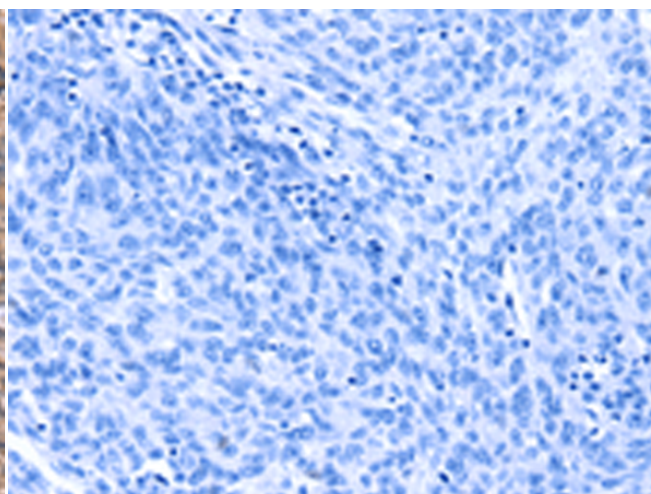
成分: PBS (without Mg²⁺ and Ca²⁺), pH 7.4, 150 mM NaCl, 0.05% Sodium Azide and 40% glycerol

研究领域: Signal Transduction, Cancer

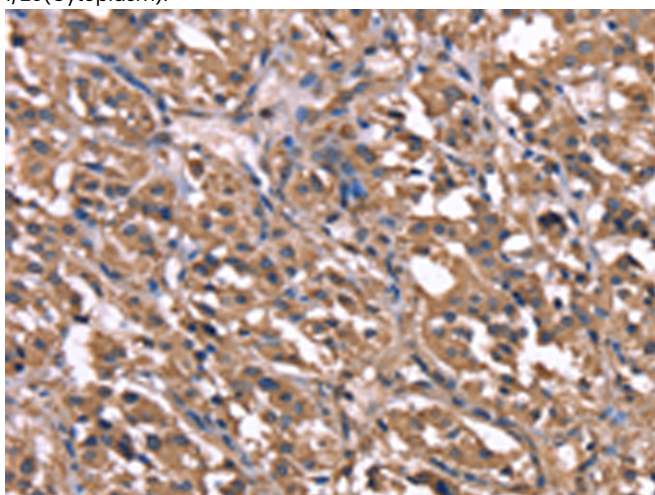
储存和运输: Store at -20°C. Avoid repeated freezing and thawing



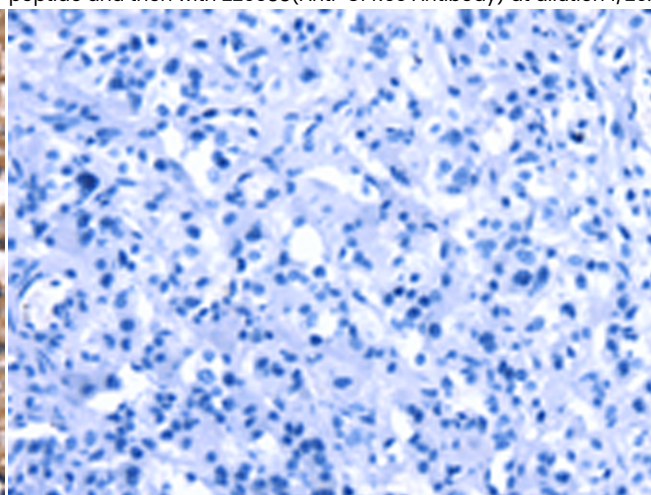
Immunohistochemistry analysis of paraffin embedded Human ovarian cancer tissue using 220588(GPR65 Antibody) at a dilution of 1/20(Cytoplasm).



In comparison with the IHC on the left, the same paraffin-embedded Human ovarian cancer tissue is first treated with the synthetic peptide and then with 220588(Anti-GPR65 Antibody) at dilution 1/20.



The image on the left is immunohistochemistry of paraffin-embedded Human thyroid cancer tissue using 220588(Anti-GPR65 Antibody) at a dilution of 1/20.



In comparison with the IHC on the left, the same paraffin-embedded Human thyroid cancer tissue is first treated with synthetic peptide and then with D261730(Anti-GPR65 Antibody) at dilution 1/20.



Product Description

Pioneering GTPase and Oncogene Product Development since 2010
