

GPR62 RABBIT PAB

货号: S222122

产品全名: GPR62 兔多抗

基因符号: GPCR8; KPG_005

UNIPROT ID: Q9BZJ7 (Gene Accession - NP_543141)

背景: Orphan receptor. Expressed in brain; detected in the basal forebrain, frontal cortex, caudate, putamen, thalamus and hippocampus.

抗原: Synthetic peptide of human GPR62

经过测试的应用: ELISA, WB, IHC

推荐稀释比: IHC: 40-200; WB: 500-2000; ELISA: 5000-10000

种属反应性: Rabbit

克隆性: Rabbit Polyclonal

亚型: Immunogen-specific rabbit IgG

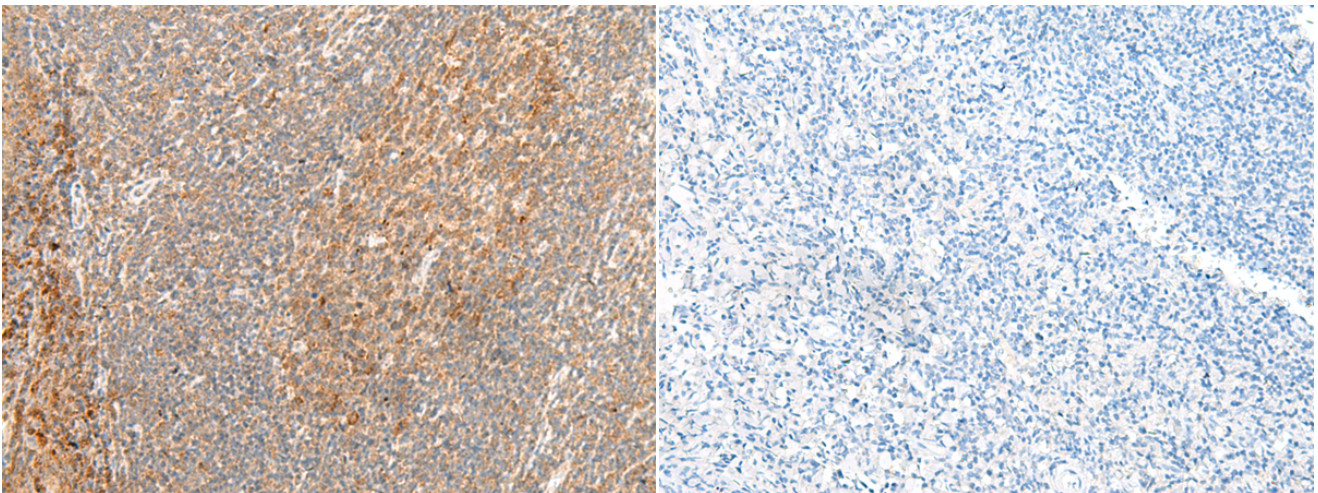
纯化: Antigen affinity purification

种属反应性: Human

成分: PBS (without Mg²⁺ and Ca²⁺), pH 7.4, 150 mM NaCl, 0.05% Sodium Azide and 40% glycerol

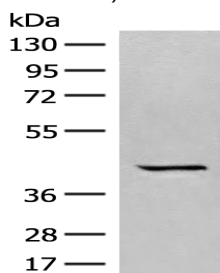
研究领域: Neuroscience

储存和运输: Store at -20°C. Avoid repeated freezing and thawing



Immunohistochemistry analysis of paraffin embedded Human tonsil tissue using 222122(GPR62 Antibody) at a dilution of 1/40(Cell membrane).

In comparison with the IHC on the left, the same paraffin-embedded Human tonsil tissue is first treated with the synthetic peptide and then with 222122(Anti-GPR62 Antibody) at dilution 1/40.



Gel: 8%SDS-PAGE, Lysate: 40 µg;

Lane: A549 cell lysate;

Primary antibody: 222122(GPR62 Antibody) at dilution 1/350;

Secondary antibody: Goat anti rabbit IgG at 1/8000 dilution;

Exposure time: 1 minute