

## GPR6 RABBIT PAB

货号: S219832

产品全名: GPR6 兔多抗

基因符号

**UNIPROT ID:** P46095 (Gene Accession - NP\_005275 )

背景: Orphan receptor with constitutive G(s) signaling activity that activate cyclic AMP. Promotes neurite outgrowth and blocks myelin inhibition in neurons.

抗原: Synthetic peptide of human GPR6

经过测试的应用: ELISA, WB, IHC

推荐稀释比: IHC: 50-100;WB: 1000-5000;ELISA: 5000-10000

种属反应性: Rabbit

克隆性: Rabbit Polyclonal

亚型: Immunogen-specific rabbit IgG

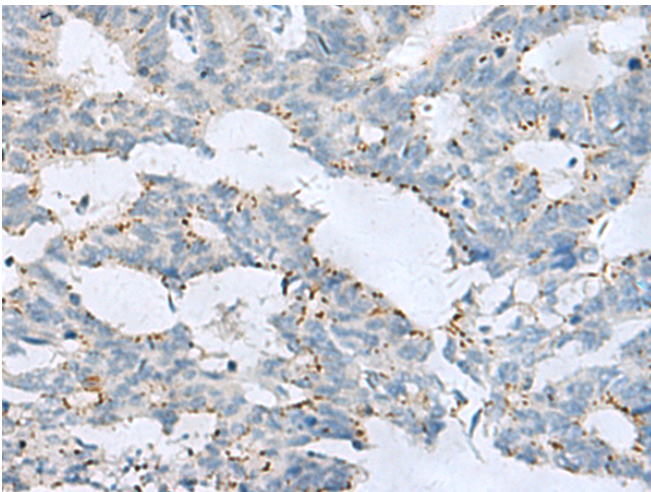
纯化: Antigen affinity purification

种属反应性: Human, Mouse, Rat

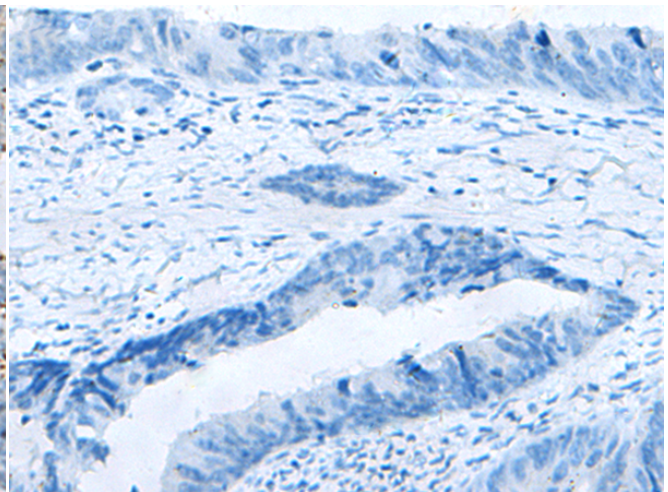
成分: PBS (without Mg<sup>2+</sup> and Ca<sup>2+</sup>), pH 7.4, 150 mM NaCl, 0.05% Sodium Azide and 40% glycerol

研究领域: Signal Transduction, Neuroscience

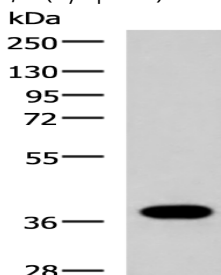
储存和运输: Store at -20°C. Avoid repeated freezing and thawing



Immunohistochemistry analysis of paraffin embedded Human colorectal cancer tissue using 219832(GPR6 Antibody) at a dilution of 1/80(Cytoplasm).



In comparison with the IHC on the left, the same paraffin-embedded Human colorectal cancer tissue is first treated with the synthetic peptide and then with 219832(Anti-GPR6 Antibody) at dilution 1/80.



Gel: 8%SDS-PAGE, Lysate: 40 µg;

Lane: Human placenta tissue lysate;

Primary antibody: 219832(GPR6 Antibody) at dilution 1/1000;

Secondary antibody: HRP-conjugated Goat anti rabbit IgG at 1/5000 dilution;

Exposure time: 10 seconds