

GPR32 RABBIT PAB

货号: S222119

产品全名: GPR32 兔多抗

基因符号: RVDR1

UNIPROT ID: O75388 (Gene Accession - NP_001497)

背景: This gene is intronless and encodes a member of the G-protein coupled receptor 1 family. The encoded protein binds to resolvins D1 and lipoxin A4 and has been linked to pulmonary inflammation. A related pseudogene has been identified on chromosome 19.

抗原: Synthetic peptide of human GPR32

经过测试的应用: ELISA, IHC

推荐稀释比: IHC: 20-100; ELISA: 500-1000

种属反应性: Rabbit

克隆性: Rabbit Polyclonal

亚型: Immunogen-specific rabbit IgG

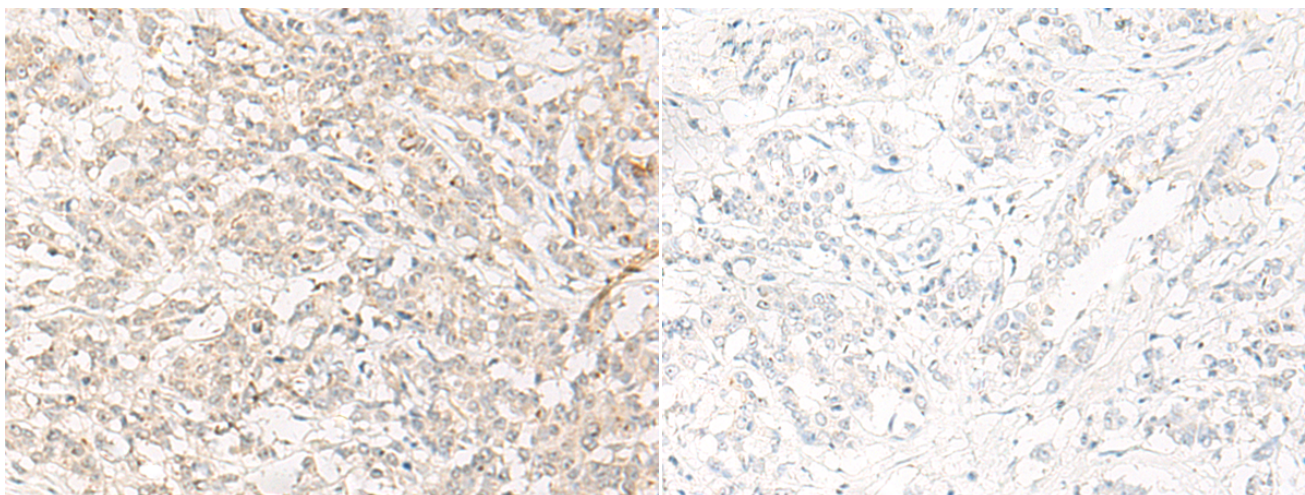
纯化: Antigen affinity purification

种属反应性: Human

成分: PBS (without Mg²⁺ and Ca²⁺), pH 7.4, 150 mM NaCl, 0.05% Sodium Azide and 40% glycerol

研究领域: Signal Transduction

储存和运输: Store at -20°C. Avoid repeated freezing and thawing



Immunohistochemistry analysis of paraffin embedded Human colorectal cancer tissue using 222119(GPR32 Antibody) at a dilution of 1/20(Cell membrane).

In comparison with the IHC on the left, the same paraffin-embedded Human colorectal cancer tissue is first treated with the synthetic peptide and then with 222119(Anti-GPR32 Antibody) at dilution 1/20.