

## GPR27 RABBIT PAB

货号: S222118

产品全名: GPR27 兔多抗

基因符号 SREB1

**UNIPROT ID:** Q9NS67 (Gene Accession - NP\_061844 )

**背景:** GPR27 is a member of the G protein-coupled receptors (GPCRs), a large family of receptors that have a similar structure characterized by 7 transmembrane domains. Activation of GPCRs by extracellular stimuli such as neurotransmitters, hormones, or light induces an intracellular signaling cascade mediated by heterotrimeric GTP-binding proteins, or G proteins.

**抗原:** Synthetic peptide of human GPR27

**经过测试的应用:** ELISA, IHC

**推荐稀释比:** IHC: 50-300; ELISA: 5000-10000

**种属反应性:** Rabbit

**克隆性:** Rabbit Polyclonal

**亚型:** Immunogen-specific rabbit IgG

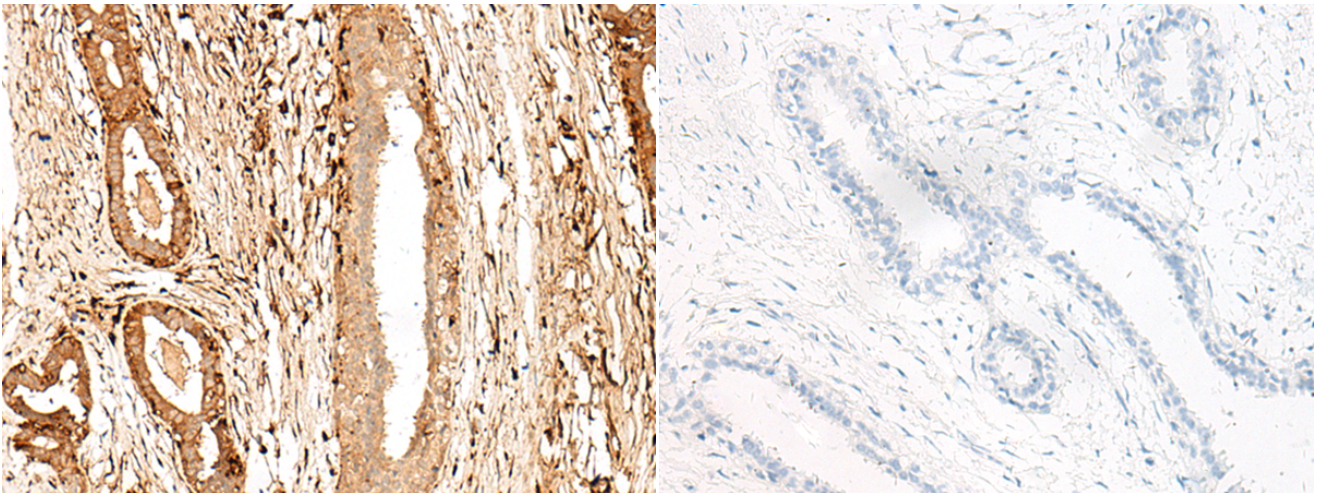
**纯化:** Antigen affinity purification

**种属反应性:** Human, Mouse, Rat

**成分:** PBS (without Mg<sup>2+</sup> and Ca<sup>2+</sup>), pH 7.4, 150 mM NaCl, 0.05% Sodium Azide and 40% glycerol

**研究领域:** Signal Transduction

**储存和运输:** Store at -20°C. Avoid repeated freezing and thawing



Immunohistochemistry analysis of paraffin embedded Human breast cancer tissue using 222118(GPR27 Antibody) at a dilution of 1/60(Cytoplasm and Cell membrane).

In comparison with the IHC on the left, the same paraffin-embedded Human breast cancer tissue is first treated with the synthetic peptide and then with 222118(Anti-GPR27 Antibody) at dilution 1/60.