

GPR22 RABBIT PAB

货号: S222106

产品全名: GPR22 兔多抗

基因符号

UNIPROT ID: Q99680 (Gene Accession - NP_005286)

背景: This gene is a member of the G-protein coupled receptor 1 family and encodes a multi-pass membrane protein.

抗原: Synthetic peptide of human GPR22

经过测试的应用: ELISA, WB, IHC

推荐稀释比: IHC: 40-200;WB: 500-2000;ELISA: 5000-10000

种属反应性: Rabbit

克隆性: Rabbit Polyclonal

亚型: Immunogen-specific rabbit IgG

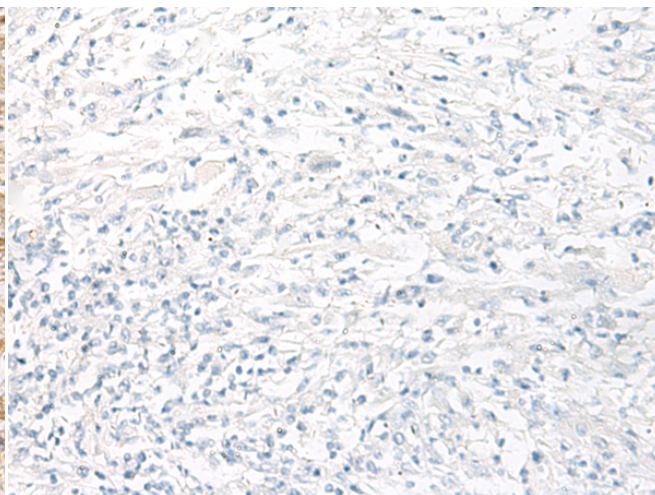
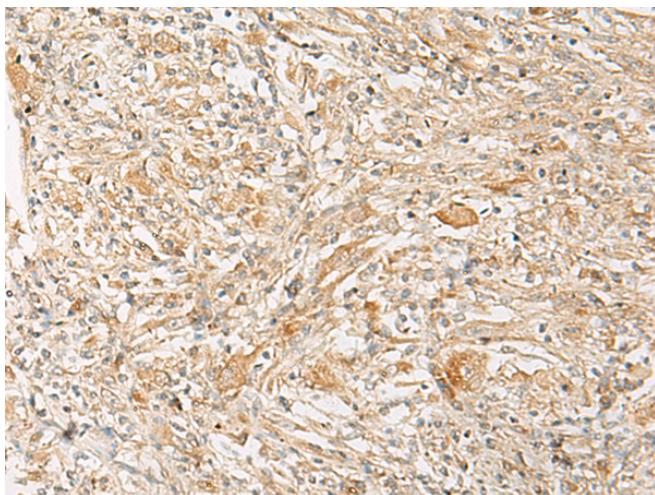
纯化: Antigen affinity purification

种属反应性: Human, Mouse

成分: PBS (without Mg²⁺ and Ca²⁺), pH 7.4, 150 mM NaCl, 0.05% Sodium Azide and 40% glycerol

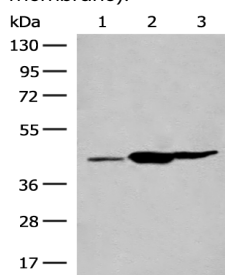
研究领域: Signal Transduction

储存和运输: Store at -20°C. Avoid repeated freezing and thawing



Immunohistochemistry analysis of paraffin embedded Human liver cancer tissue using 222106(GPR22 Antibody) at a dilution of 1/50(Cell membrane).

In comparison with the IHC on the left, the same paraffin-embedded Human liver cancer tissue is first treated with the synthetic peptide and then with 222106(Anti-GPR22 Antibody) at dilution 1/50.



Gel: 8%SDS-PAGE, Lysate: 40 µg;

Lane 1-3: Mouse liver tissue, Mouse kidney tissue, Rat brain tissue lysates;

Primary antibody: 222106(GPR22 Antibody) at dilution 1/500;

Secondary antibody: Goat anti rabbit IgG at 1/8000 dilution;

Exposure time: 10 seconds