

GPR182 RABBIT PAB

货号: S220385

产品全名: GPR182 兔多抗

基因符号: AMR; 7TMR; ADMR; AM-R; G10D; gamrh; hrhAMR

UNIPROT ID: O15218 (Gene Accession - NP_009195)

背景: Adrenomedullin is a potent vasodilator peptide that exerts major effects on cardiovascular function. This gene encodes a seven-transmembrane protein that belongs to the family 1 of G-protein coupled receptors. Studies of the rat counterpart suggest that the encoded protein may function as a receptor for adrenomedullin.

抗原: Synthetic peptide of human GPR182

经过测试的应用: ELISA, WB, IHC

推荐稀释比: IHC: 15-50;WB: 500-2000;ELISA: 2000-5000

种属反应性: Rabbit

克隆性: Rabbit Polyclonal

亚型: Immunogen-specific rabbit IgG

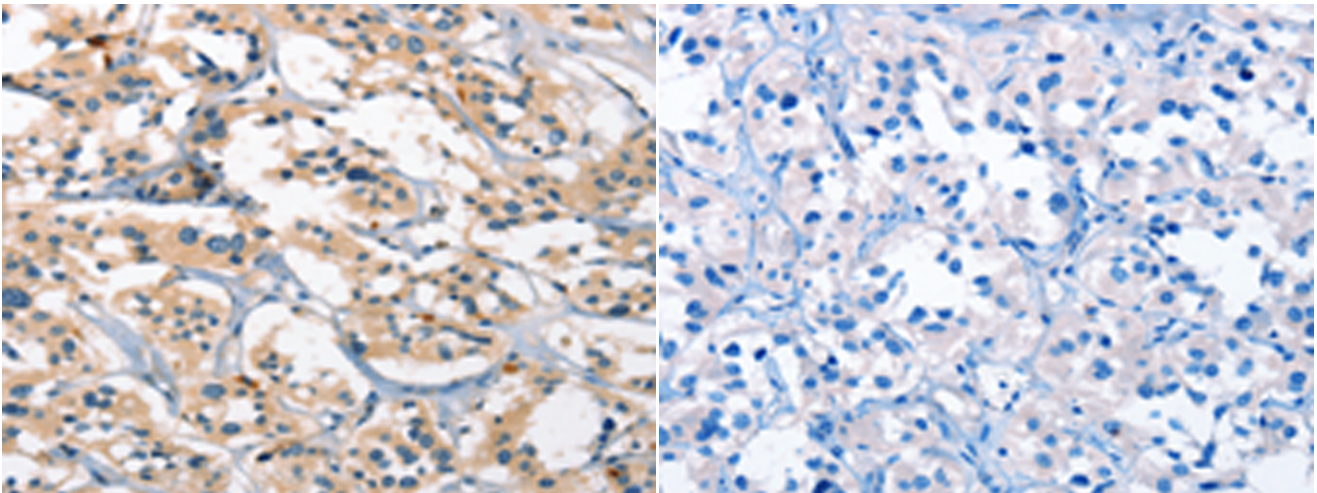
纯化: Antigen affinity purification

种属反应性: Human, Mouse

成分: PBS (without Mg²⁺ and Ca²⁺), pH 7.4, 150 mM NaCl, 0.05% Sodium Azide and 40% glycerol

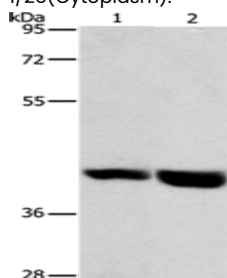
研究领域: Signal Transduction, Cancer, Cardiovascular

储存和运输: Store at -20°C. Avoid repeated freezing and thawing



Immunohistochemistry analysis of paraffin embedded Human thyroid cancer tissue using 220385(GPR182 Antibody) at a dilution of 1/25(Cytoplasm).

In comparison with the IHC on the left, the same paraffin-embedded Human thyroid cancer tissue is first treated with the synthetic peptide and then with 220385(Anti-GPR182 Antibody) at dilution 1/25.



Gel: 8%SDS-PAGE, Lysate: 40 µg;

Lane 1-2: Mouse heart tissue, Mouse liver tissue;

Primary antibody: 220385(GPR182 Antibody) at dilution 1/1000;

Secondary antibody: Goat anti rabbit IgG at 1/8000 dilution;

Exposure time: 2 minutes