

## GPR162 RABBIT PAB

货号: S222135

产品全名: GPR162 兔多抗

基因符号 A-2; GRCA

**UNIPROT ID:** Q16538 (Gene Accession - NP\_062832)

**背景:** This gene was identified upon genomic analysis of a gene-dense region at human chromosome 12p13. It appears to be mainly expressed in the brain; however, its function is not known. Alternatively spliced transcript variants encoding different isoforms have been identified.

**抗原:** Synthetic peptide of human GPR162

**经过测试的应用:** ELISA, IHC

**推荐稀释比:** IHC: 30-150; ELISA: 5000-10000

**种属反应性:** Rabbit

**克隆性:** Rabbit Polyclonal

**亚型:** Immunogen-specific rabbit IgG

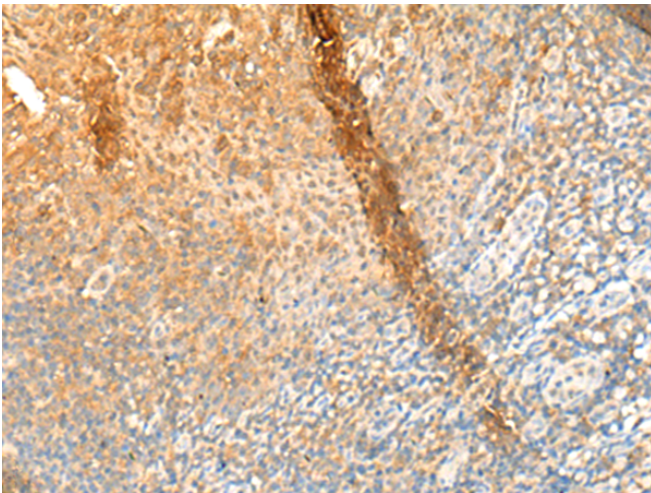
**纯化:** Antigen affinity purification

**种属反应性:** Human, Mouse

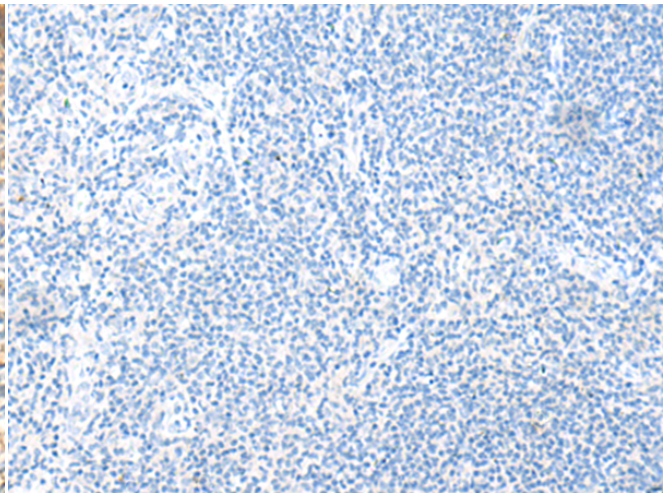
**成分:** PBS (without Mg<sup>2+</sup> and Ca<sup>2+</sup>), pH 7.4, 150 mM NaCl, 0.05% Sodium Azide and 40% glycerol

**研究领域:** Signal Transduction

**储存和运输:** Store at -20°C. Avoid repeated freezing and thawing



Immunohistochemistry analysis of paraffin embedded Human tonsil tissue using 222135(GPR162 Antibody) at a dilution of 1/65(Cell membrane).



In comparison with the IHC on the left, the same paraffin-embedded Human tonsil tissue is first treated with the synthetic peptide and then with 222135(Anti-GPR162 Antibody) at dilution 1/65.