

## GPR15 RABBIT PAB

货号: S220992

产品全名: GPR15 兔多抗

基因符号: BOB

**UNIPROT ID:** P49685 (Gene Accession - NP\_005281)

**背景:** This gene encodes a G protein-coupled receptor that acts as a chemokine receptor for human immunodeficiency virus type 1 and 2. The encoded protein localizes to the cell membrane.

**抗原:** Synthetic peptide of human GPR15

**经过测试的应用:** ELISA, WB, IHC

**推荐稀释比:** IHC: Oct-50;WB: 500-2000;ELISA: 2000-5000

**种属反应性:** Rabbit

**克隆性:** Rabbit Polyclonal

**亚型:** Immunogen-specific rabbit IgG

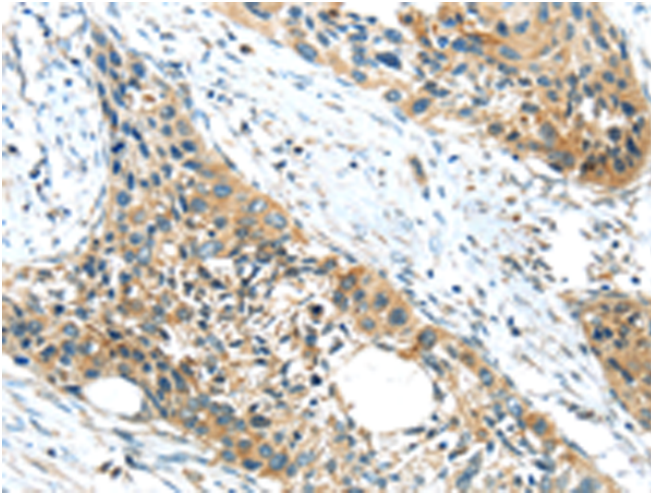
**纯化:** Antigen affinity purification

**种属反应性:** Human

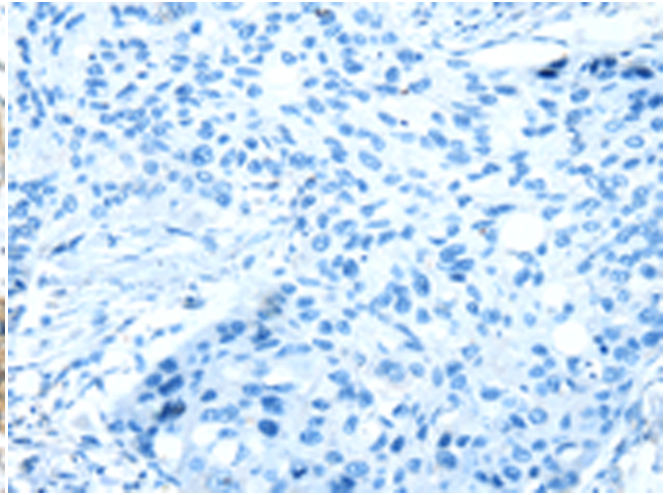
**成分:** PBS (without Mg<sup>2+</sup> and Ca<sup>2+</sup>), pH 7.4, 150 mM NaCl, 0.05% Sodium Azide and 40% glycerol

**研究领域:** Signal Transduction, Neuroscience

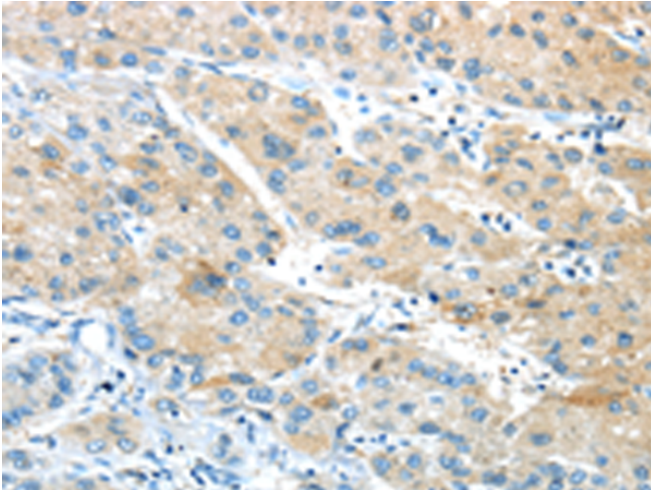
**储存和运输:** Store at -20°C. Avoid repeated freezing and thawing



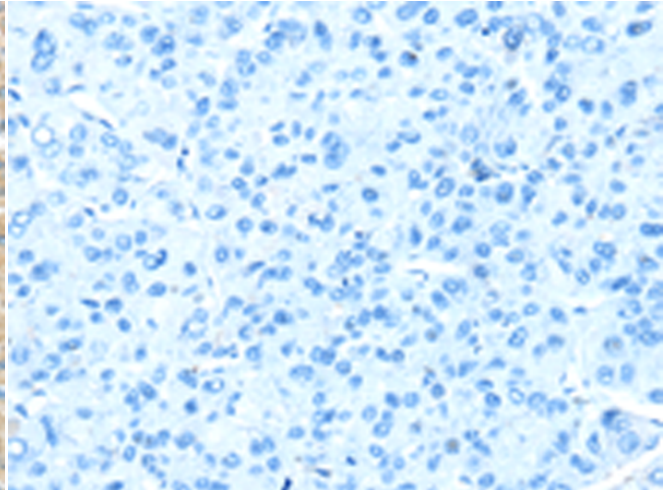
Immunohistochemistry analysis of paraffin embedded Human esophagus cancer tissue using 220992(GPR15 Antibody) at a dilution of 1/20(Cell membrane).



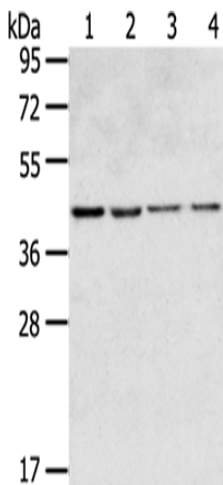
In comparison with the IHC on the left, the same paraffin-embedded Human esophagus cancer tissue is first treated with the synthetic peptide and then with 220992(Anti-GPR15 Antibody) at dilution 1/20.



The image on the left is immunohistochemistry of paraffin-embedded Human liver cancer tissue using 220992(Anti-GPR15 Antibody) at a dilution of 1/20.



In comparison with the IHC on the left, the same paraffin-embedded Human liver cancer tissue is first treated with synthetic peptide and then with D262331(Anti-GPR15 Antibody) at dilution 1/20.



Gel: 8%SDS-PAGE, Lysate: 40 µg;  
Lane 1-4: HepG2 cells, 231 cells, Hela cells, Lovo cells;  
Primary antibody: 220992(GPR15 Antibody) at dilution 1/350;  
Secondary antibody: Goat anti rabbit IgG at 1/8000 dilution;  
Exposure time: 20 seconds



# Product Description

Pioneering GTPase and Oncogene Product Development since 2010

---