

## GPR142 RABBIT PAB

货号: S222131

产品全名: GPR142 兔多抗

基因符号 PGR2; GPRg1b

**UNIPROT ID:** Q7Z601 (Gene Accession - NP\_861455 )

背景: GPR142 is a member of the rhodopsin family of G protein-coupled receptors (GPRs) (Fredriksson et al., 2003 [PubMed 14623098]).

抗原: Synthetic peptide of human GPR142

经过测试的应用: ELISA, WB, IHC

推荐稀释比: IHC: Oct-50;WB: 200-1000;ELISA: 5000-10000

种属反应性: Rabbit

克隆性: Rabbit Polyclonal

亚型: Immunogen-specific rabbit IgG

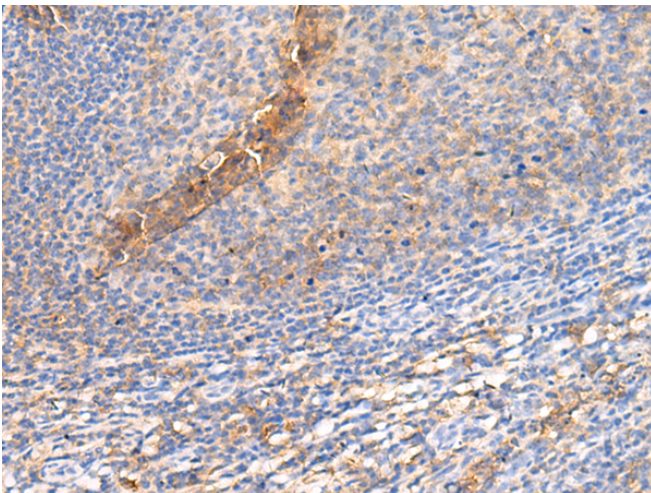
纯化: Antigen affinity purification

种属反应性: Human

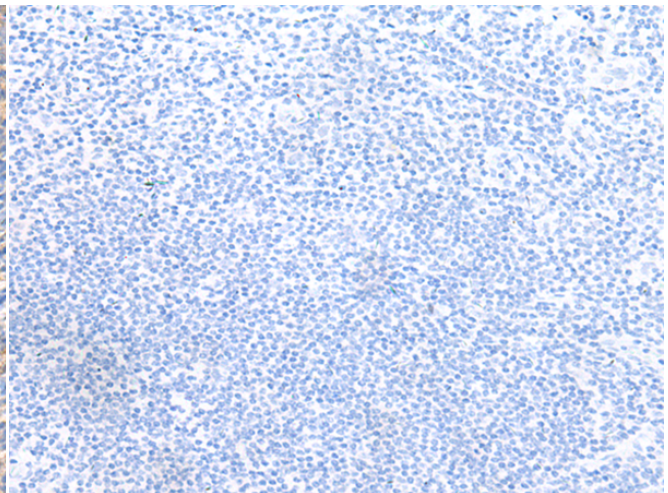
成分: PBS (without Mg<sup>2+</sup> and Ca<sup>2+</sup>), pH 7.4, 150 mM NaCl, 0.05% Sodium Azide and 40% glycerol

研究领域: Signal Transduction, Neuroscience

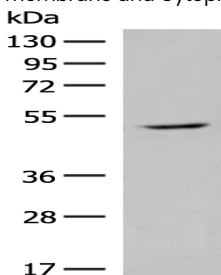
储存和运输: Store at -20°C. Avoid repeated freezing and thawing



Immunohistochemistry analysis of paraffin embedded Human tonsil tissue using 222131(GPR142 Antibody) at a dilution of 1/20(Cell membrane and Cytoplasm).



In comparison with the IHC on the left, the same paraffin-embedded Human tonsil tissue is first treated with the synthetic peptide and then with 222131(Anti-GPR142 Antibody) at dilution 1/20.



Gel: 8%SDS-PAGE, Lysate: 40 µg;

Lane: HeLa cell lysate;

Primary antibody: 222131(GPR142 Antibody) at dilution 1/250;

Secondary antibody: Goat anti rabbit IgG at 1/8000 dilution;

Exposure time: 1 minute