

GPR12 RABBIT PAB

货号: S215865

产品全名: GPR12 兔多抗

基因符号: GPCR12; GPCR21; PPP1R84

UNIPROT ID: P47775 (Gene Accession - NP_005279)

背景: Promotes neurite outgrowth and blocks myelin inhibition in neurons (By similarity). Receptor with constitutive G(s) signaling activity that stimulates cyclic AMP production.

抗原: Synthetic peptide of human GPR12

经过测试的应用: ELISA, IHC

推荐稀释比: IHC: 40-200; ELISA: 5000-10000

种属反应性: Rabbit

克隆性: Rabbit Polyclonal

亚型: Immunogen-specific rabbit IgG

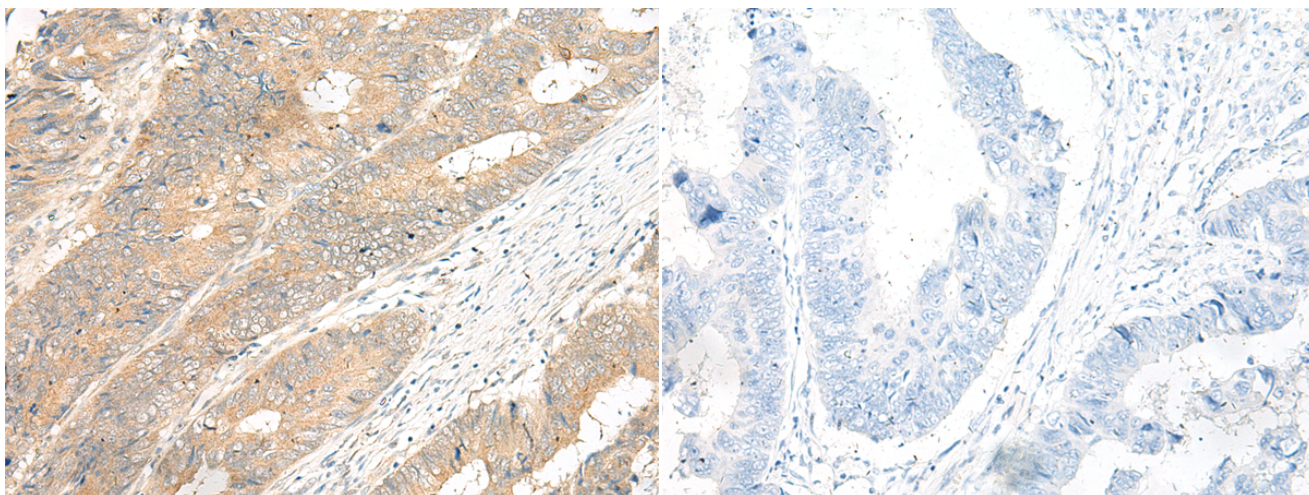
纯化: Antigen affinity purification

种属反应性: Human, Mouse, Rat

成分: PBS (without Mg²⁺ and Ca²⁺), pH 7.4, 150 mM NaCl, 0.05% Sodium Azide and 40% glycerol

研究领域: Signal Transduction

储存和运输: Store at -20°C. Avoid repeated freezing and thawing



Immunohistochemistry analysis of paraffin embedded Human colorectal cancer tissue using 215865(GPR12 Antibody) at a dilution of 1/35(Cell membrane).

In comparison with the IHC on the left, the same paraffin-embedded Human colorectal cancer tissue is first treated with the synthetic peptide and then with 215865(Anti-GPR12 Antibody) at dilution 1/35.