

GPLD1 RABBIT PAB

货号: S213128

产品全名: GPLD1 兔多抗

基因符号: PLD; GPIPLD; PIGPLD; GPIPLDM; PIGPLDI

UNIPROT ID: P80108 (Gene Accession - BC020748)

背景: Many proteins are tethered to the extracellular face of eukaryotic plasma membranes by a glycosylphosphatidylinositol (GPI) anchor. The GPI-anchor is a glycolipid found on many blood cells. The protein encoded by this gene is a GPI degrading enzyme.

Glycosylphosphatidylinositol specific phospholipase D1 hydrolyzes the inositol phosphate linkage in proteins anchored by phosphatidylinositol glycans, thereby releasing the attached protein from the plasma membrane.

抗原: Fusion protein of human GPLD1

经过测试的应用: ELISA, IHC

推荐稀释比: IHC: 100-300; ELISA: 5000-10000

种属反应性: Rabbit

克隆性: Rabbit Polyclonal

亚型: Immunogen-specific rabbit IgG

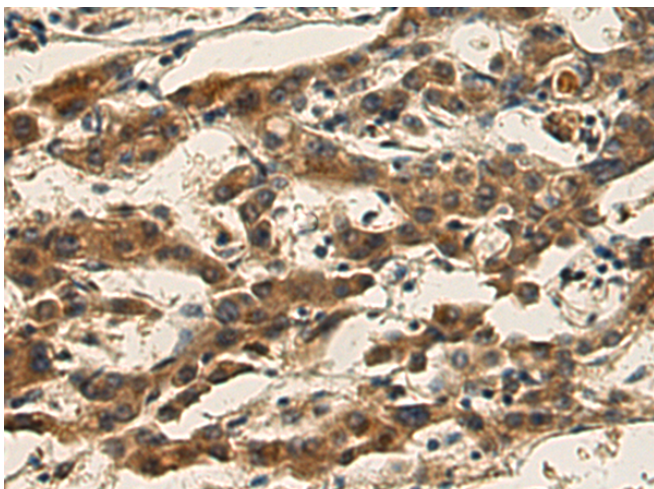
纯化: Antigen affinity purification

种属反应性: Human, Rat

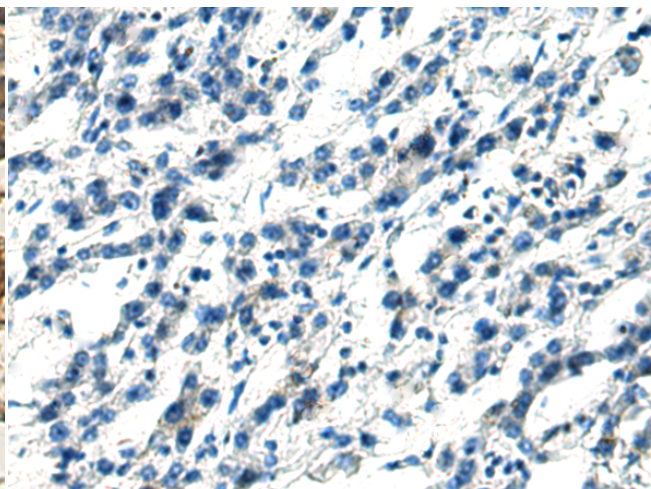
成分: PBS (without Mg²⁺ and Ca²⁺), pH 7.4, 150 mM NaCl, 0.05% Sodium Azide and 40% glycerol

研究领域: Cardiovascular

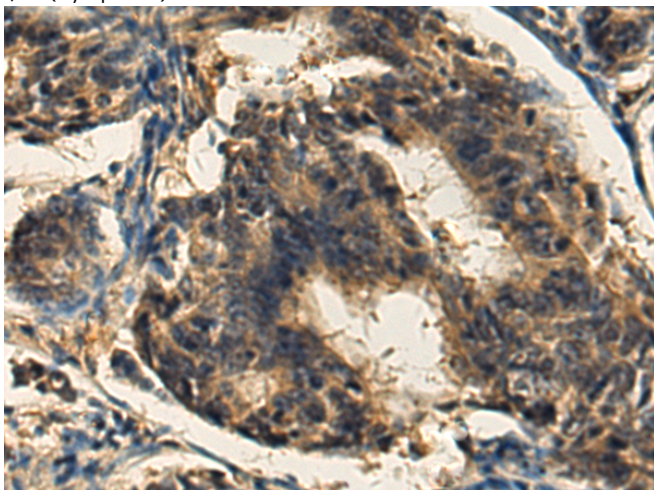
储存和运输: Store at -20°C. Avoid repeated freezing and thawing



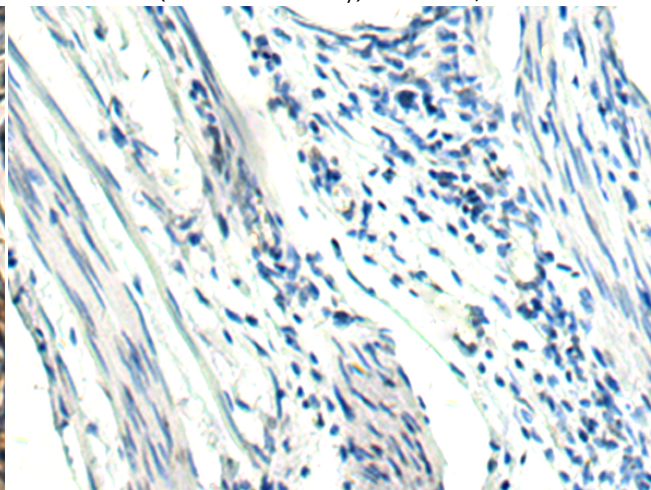
Immunohistochemistry analysis of paraffin embedded Human liver cancer tissue using 213128(GPLD1 Antibody) at a dilution of 1/120(Cytoplasm).



In comparison with the IHC on the left, the same paraffin-embedded Human liver cancer tissue is first treated with the fusion protein and then with 213128(Anti-GPLD1 Antibody) at dilution 1/120.



The image on the left is immunohistochemistry of paraffin-embedded Human colorectal cancer tissue using 213128(Anti-GPLD1 Antibody) at a dilution of 1/120.



In comparison with the IHC on the left, the same paraffin-embedded Human colorectal cancer tissue is first treated with fusion protein and then with D126980(Anti-GPLD1 Antibody) at dilution 1/120.



Product Description

Pioneering GTPase and Oncogene Product Development since 2010
