

GPKOW RABBIT PAB

货号: S219141

产品全名: GPKOW 兔多抗

基因符号 T54; Spp2; GPATC5; GPATCH5

UNIPROT ID: Q92917 (Gene Accession - BC000397)

背景: This gene encodes a putative RNA-binding protein containing G-patch and KOW (Kyprides, Ouzounis, Woese) domains. The encoded protein interacts directly with protein kinase A and protein kinase X and is also found associated with the spliceosome.

抗原: Fusion protein of human GPKOW

经过测试的应用: ELISA, WB, IHC

推荐稀释比: IHC: 100-500; WB: 1000-5000; ELISA: 5000-10000

种属反应性: Rabbit

克隆性: Rabbit Polyclonal

亚型: Immunogen-specific rabbit IgG

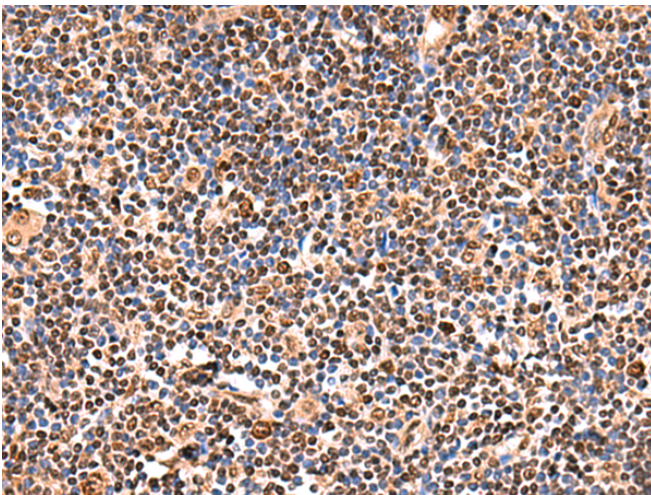
纯化: Antigen affinity purification

种属反应性: Human

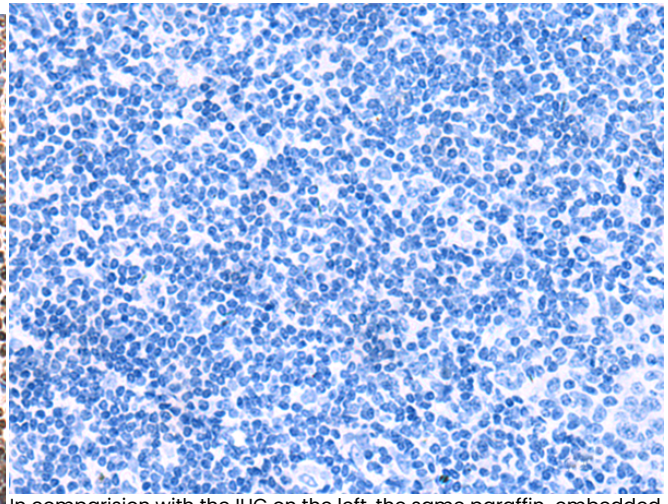
成分: PBS (without Mg²⁺ and Ca²⁺), pH 7.4, 150 mM NaCl, 0.05% Sodium Azide and 40% glycerol

研究领域: Cell Biology

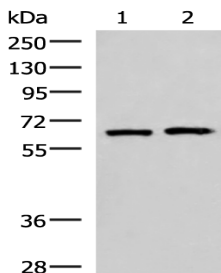
储存和运输: Store at -20°C. Avoid repeated freezing and thawing



Immunohistochemistry analysis of paraffin embedded Human tonsil tissue using 219141(GPKOW Antibody) at a dilution of 1/140(Nucleus).



In comparison with the IHC on the left, the same paraffin-embedded Human tonsil tissue is first treated with the fusion protein and then with 219141(Anti-GPKOW Antibody) at dilution 1/140.



Gel: 8%SDS-PAGE, Lysate: 40 µg;

Lane 1-2: 293T and Jurkat cell lysates;

Primary antibody: 219141(GPKOW Antibody) at dilution 1/2000;

Secondary antibody: HRP-conjugated Goat anti rabbit IgG at 1/5000 dilution;

Exposure time: 30 seconds