

## GPI RABBIT PAB

货号: S215843

产品全名: GPI 兔多抗

基因符号: AMF; NLK; PGI; PHI; GNPI; SA36; SA-36

**UNIPROT ID:** P06744 (Gene Accession - NP\_000166)

**背景:** This gene encodes a member of the glucose phosphate isomerase protein family. The encoded protein has been identified as a moonlighting protein based on its ability to perform mechanistically distinct functions. In the cytoplasm, the gene product functions as a glycolytic enzyme (glucose-6-phosphate isomerase) that interconverts glucose-6-phosphate and fructose-6-phosphate. Extracellularly, the encoded protein (also referred to as neuroleukin) functions as a neurotrophic factor that promotes survival of skeletal motor neurons and sensory neurons, and as a lymphokine that induces immunoglobulin secretion. The encoded protein is also referred to as autocrine motility factor based on an additional function as a tumor-secreted cytokine and angiogenic factor. Defects in this gene are the cause of nonspherocytic hemolytic anemia and a severe enzyme deficiency can be associated with hydrops fetalis, immediate neonatal death and neurological impairment. Alternative splicing results in multiple transcript variants.

**抗原:** Synthetic peptide of human GPI

**经过测试的应用:** ELISA, WB, IHC

**推荐稀释比:** IHC: 50-200;WB: 500-2000;ELISA: 5000-10000

**种属反应性:** Rabbit

**克隆性:** Rabbit Polyclonal

**亚型:** Immunogen-specific rabbit IgG

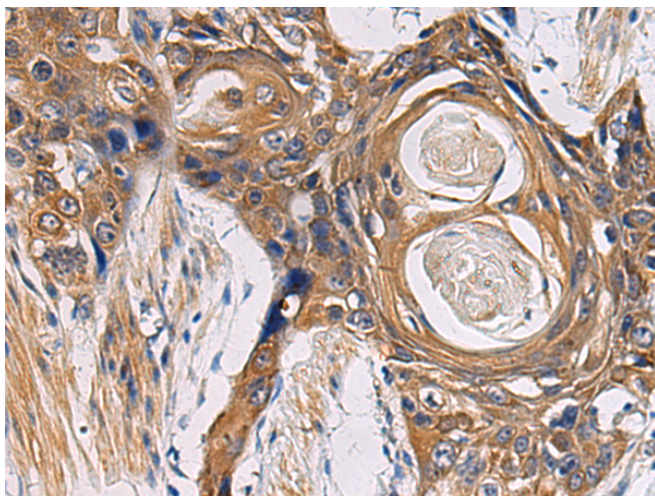
**纯化:** Antigen affinity purification

**种属反应性:** Human, Mouse, Rat

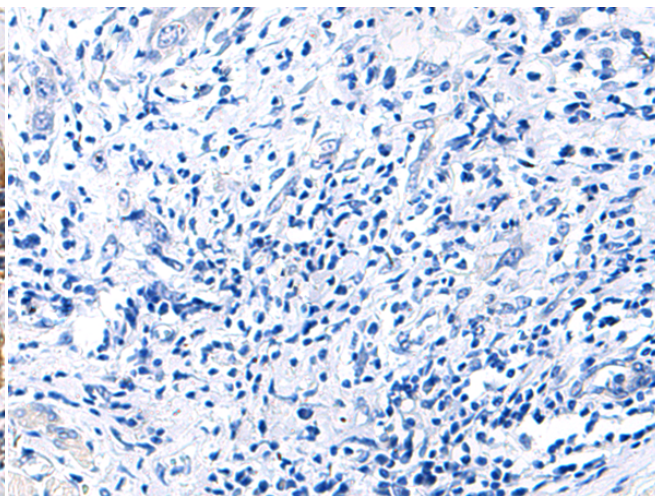
**成分:** PBS (without Mg<sup>2+</sup> and Ca<sup>2+</sup>), pH 7.4, 150 mM NaCl, 0.05% Sodium Azide and 40% glycerol

**研究领域:** Metabolism, Cancer, Neuroscience, Immunology

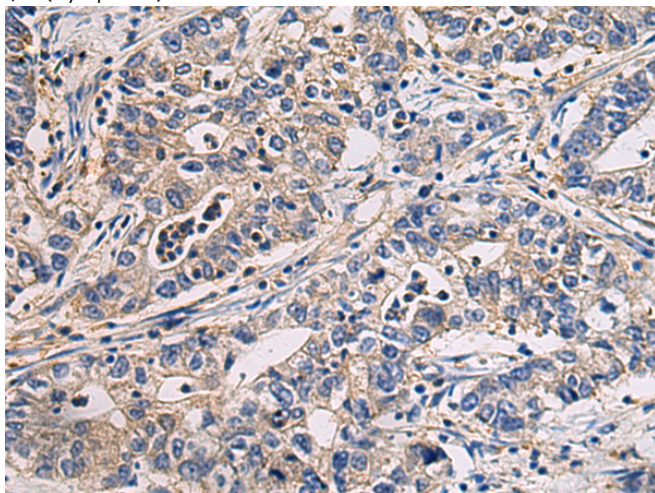
**储存和运输:** Store at -20°C. Avoid repeated freezing and thawing



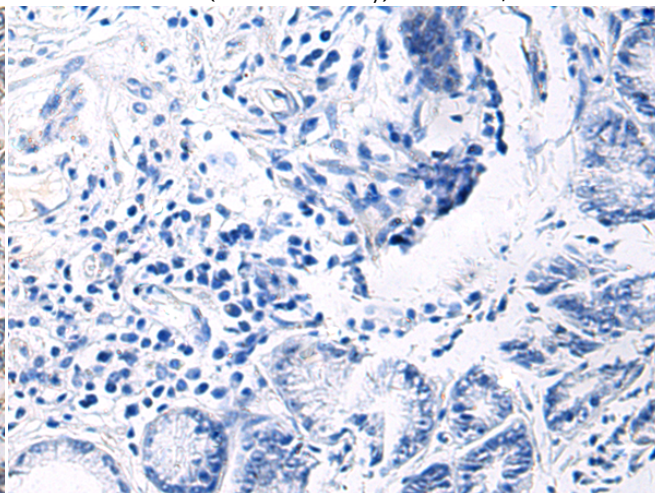
Immunohistochemistry analysis of paraffin embedded Human esophagus cancer using 215843(GPI Antibody) at a dilution of 1/45(Cytoplasm).



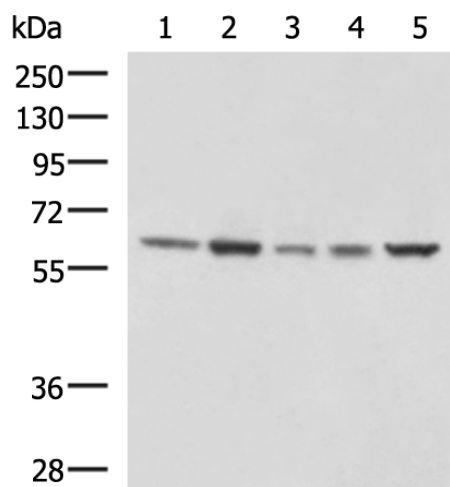
In comparison with the IHC on the left, the same paraffin-embedded Human esophagus cancer is first treated with the synthetic peptide and then with 215843(Anti-GPI Antibody) at dilution 1/45.



The image on the left is immunohistochemistry of paraffin-embedded Human gastric cancer using 215843(Anti-GPI Antibody) at a dilution of 1/45.



In comparison with the IHC on the left, the same paraffin-embedded Human gastric cancer is first treated with synthetic peptide and then with D163998(Anti-GPI Antibody) at dilution 1/45.



Gel: 8%SDS-PAGE, Lysate: 40 µg;  
 Lane 1-5: PC3, Raji, HeLa, 231 and Jurkat cell lysates;  
 Primary antibody: 215843(GPI Antibody) at dilution 1/1000;  
 Secondary antibody: HRP-conjugated Goat anti rabbit IgG at 1/5000 dilution;  
 Exposure time: 3 minutes



# Product Description

Pioneering GTPase and Oncogene Product Development since 2010

---