

GPHN RABBIT PAB

货号: S220568

产品全名: GPHN 兔多抗

基因符号: Geph

UNIPROT ID: Q9NQX3 (Gene Accession - NP_001019389)

背景: Gephyrin is a microtubule-associated protein highly expressed in brain and localized to neuronal postsynaptic membranes. Gephyrin is essential for the postsynaptic localization of the inhibitory glycine receptor and is thought to anchor the receptor to subsynaptic microtubules. The protein is expressed in most mammalian tissues with predominant expression in brain. At least five additional splice variants of Gephyrin ranging in molecular weight have been identified in rat and human brain tissue.

抗原: Synthetic peptide of human GPHN

经过测试的应用: ELISA, IHC

推荐稀释比: IHC: 25-100; ELISA: 1000-2000

种属反应性: Rabbit

克隆性: Rabbit Polyclonal

亚型: Immunogen-specific rabbit IgG

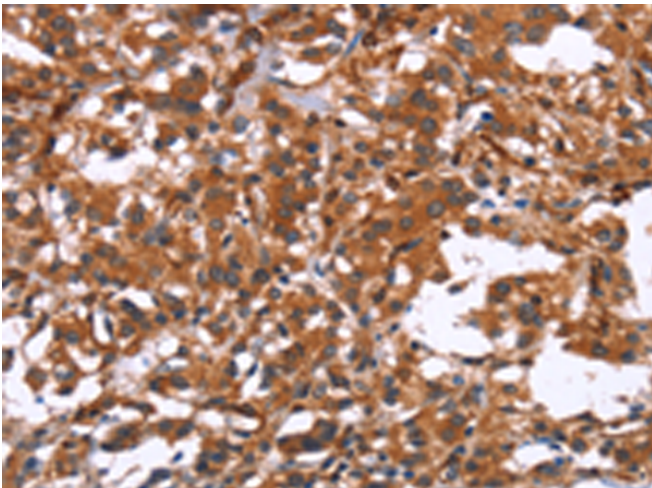
纯化: Antigen affinity purification

种属反应性: Human, Mouse, Rat

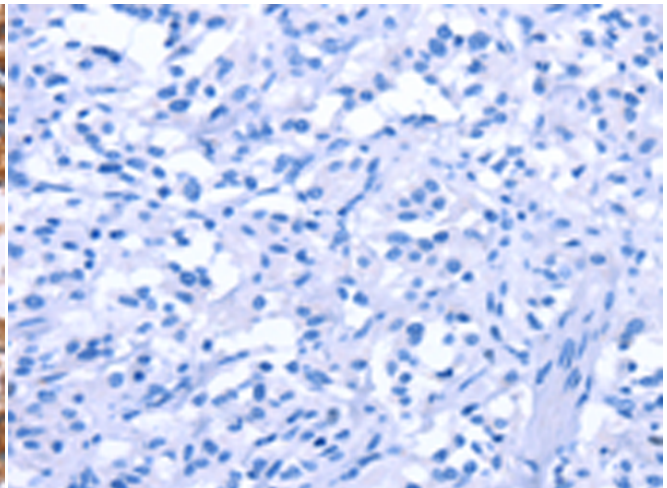
成分: PBS (without Mg²⁺ and Ca²⁺), pH 7.4, 150 mM NaCl, 0.05% Sodium Azide and 40% glycerol

研究领域: Neuroscience

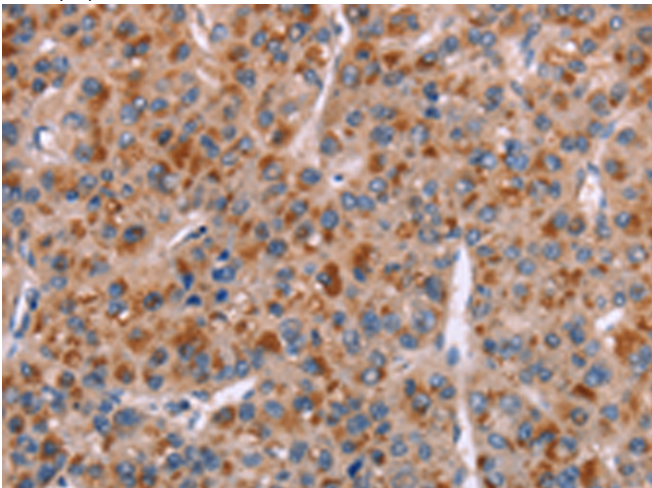
储存和运输: Store at -20°C. Avoid repeated freezing and thawing



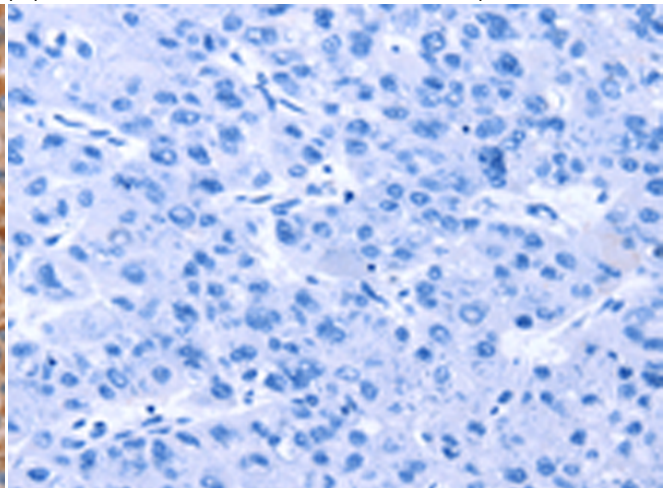
Immunohistochemistry analysis of paraffin embedded Human thyroid cancer tissue using 220568(GPHN Antibody) at a dilution of 1/15(Cytoplasm).



In comparison with the IHC on the left, the same paraffin-embedded Human thyroid cancer tissue is first treated with the synthetic peptide and then with 220568(Anti-GPHN Antibody) at dilution 1/15.



The image on the left is immunohistochemistry of paraffin-embedded Human liver cancer tissue using 220568(Anti-GPHN Antibody) at a dilution of 1/15.



In comparison with the IHC on the left, the same paraffin-embedded Human liver cancer tissue is first treated with synthetic peptide and then with D261706(Anti-GPHN Antibody) at dilution 1/15.



Product Description

Pioneering GTPase and Oncogene Product Development since 2010
