

## GPD1L RABBIT PAB

货号: S212771

产品全名: GPD1L 兔多抗

基因符号: GPD1L

**UNIPROT ID:** Q8N335 (Gene Accession - BC028726)

**背景:** The protein encoded by this gene catalyzes the conversion of sn-glycerol 3-phosphate to glycerone phosphate. The encoded protein is found in the cytoplasm, associated with the plasma membrane, where it binds the sodium channel, voltage-gated, type V, alpha subunit (SCN5A). Defects in this gene are a cause of Brugada syndrome type 2 (BRS2) as well as sudden infant death syndrome (SIDS).

**抗原:** Fusion protein of human GPD1L

**经过测试的应用:** ELISA, IHC

**推荐稀释比:** IHC: 50-300; ELISA: 5000-10000

**种属反应性:** Rabbit

**克隆性:** Rabbit Polyclonal

**亚型:** Immunogen-specific rabbit IgG

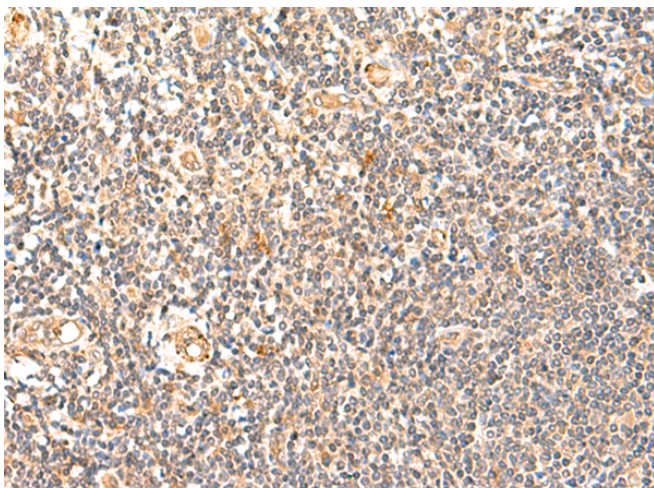
**纯化:** Antigen affinity purification

**种属反应性:** Human, Mouse

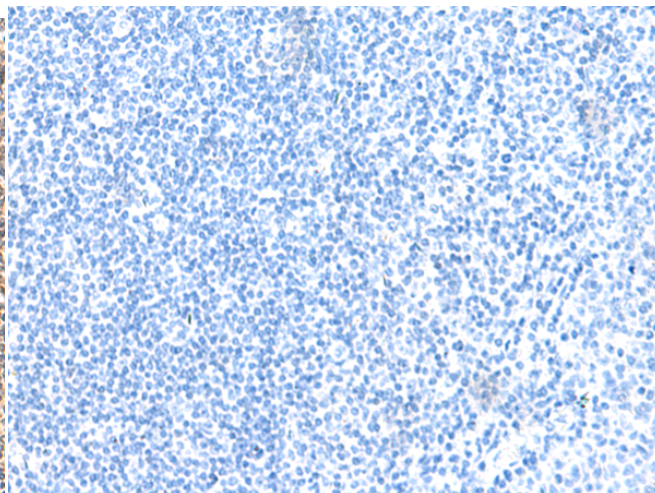
**成分:** PBS (without Mg<sup>2+</sup> and Ca<sup>2+</sup>), pH 7.4, 150 mM NaCl, 0.05% Sodium Azide and 40% glycerol

**研究领域:** Metabolism

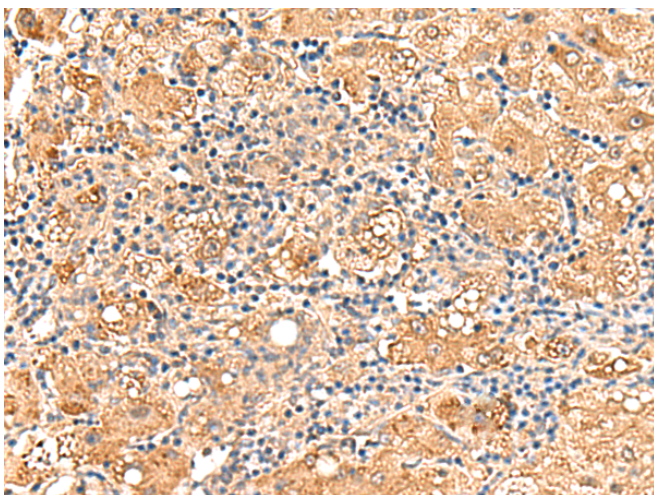
**储存和运输:** Store at -20°C. Avoid repeated freezing and thawing



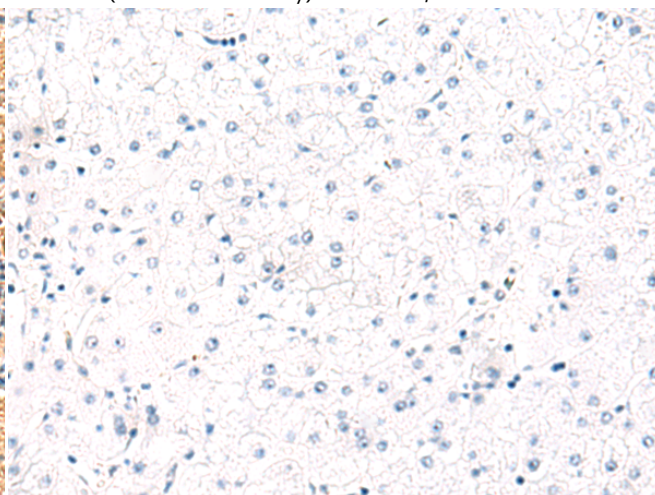
Immunohistochemistry analysis of paraffin embedded Human tonsil tissue using 212771(GPD1L Antibody) at a dilution of 1/60(Cytoplasm).



In comparison with the IHC on the left, the same paraffin-embedded Human tonsil tissue is first treated with the fusion protein and then with 212771(Anti-GPD1L Antibody) at dilution 1/60.



The image on the left is immunohistochemistry of paraffin-embedded Human liver cancer tissue using 212771(Anti-GPD1L Antibody) at a dilution of 1/60.



In comparison with the IHC on the left, the same paraffin-embedded Human liver cancer tissue is first treated with fusion protein and then with D125778(Anti-GPD1L Antibody) at dilution 1/60.



# Product Description

Pioneering GTPase and Oncogene Product Development since 2010

---