

## GPCPD1 RABBIT PAB

货号: S219171

产品全名: GPCPD1 兔多抗

基因符号 EDI3; GDE5; GDPD6; PREI4

**UNIPROT ID:** Q9NPB8 (Gene Accession - BC027588)

背景: May be involved in the negative regulation of skeletal muscle differentiation, independently of its glycerophosphocholine phosphodiesterase activity.

抗原: Fusion protein of human GPCPD1

经过测试的应用: ELISA, WB, IHC

推荐稀释比: IHC: 50-100;WB: 500-2000;ELISA: 5000-10000

种属反应性: Rabbit

克隆性: Rabbit Polyclonal

亚型: Immunogen-specific rabbit IgG

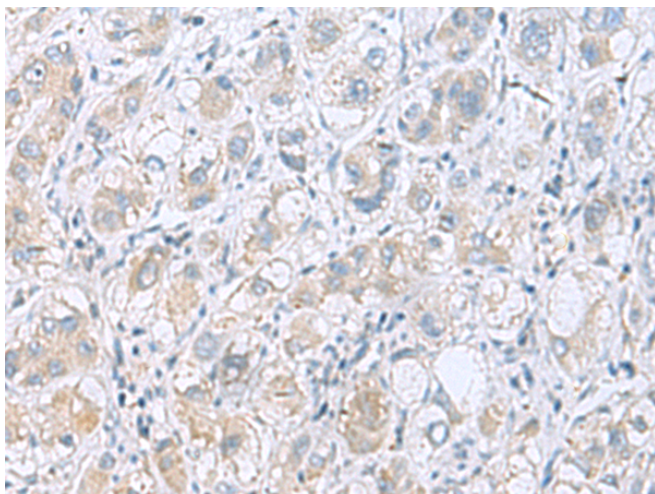
纯化: Antigen affinity purification

种属反应性: Human, Mouse, Rat

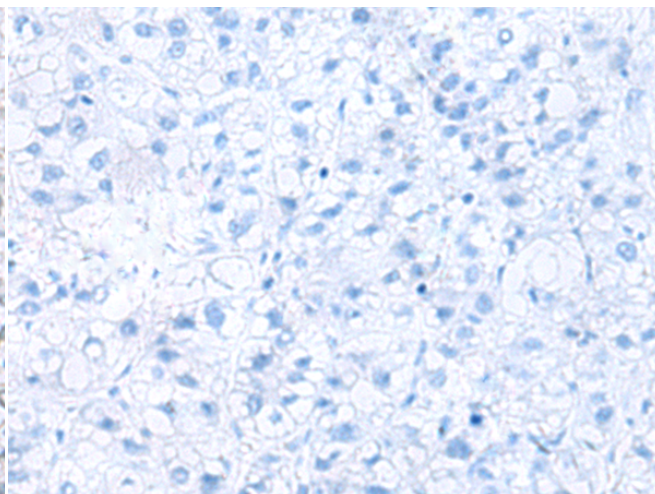
成分: PBS (without Mg<sup>2+</sup> and Ca<sup>2+</sup>), pH 7.4, 150 mM NaCl, 0.05% Sodium Azide and 40% glycerol

研究领域: Cell Biology

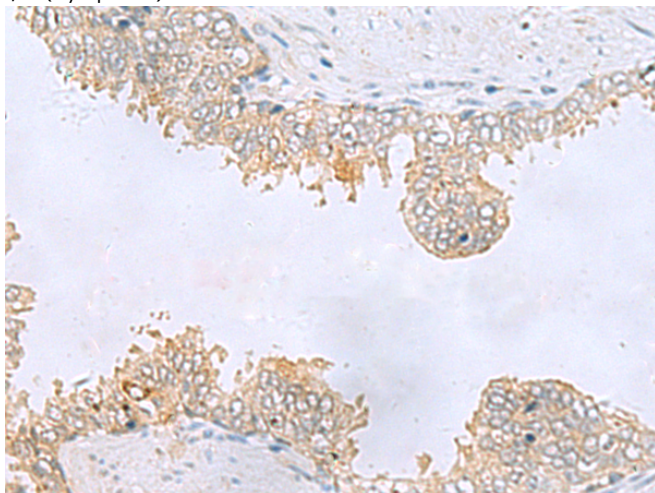
储存和运输: Store at -20°C. Avoid repeated freezing and thawing



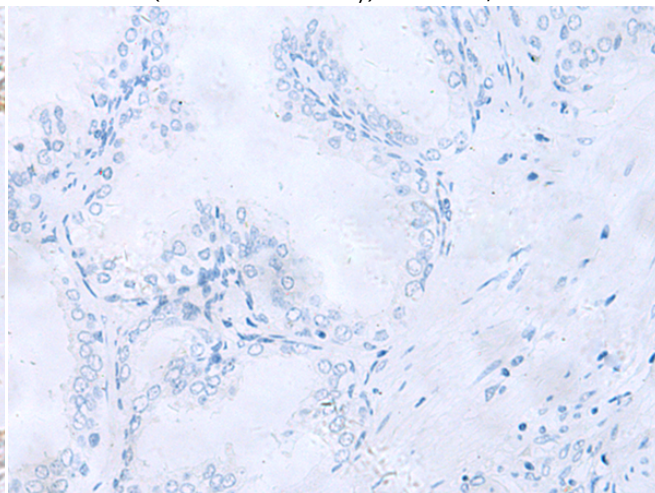
Immunohistochemistry analysis of paraffin embedded Human liver cancer tissue using 219171(GPCPD1 Antibody) at a dilution of 1/55(Cytoplasm).



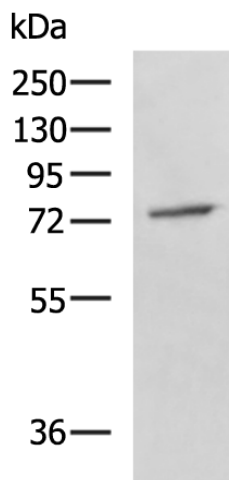
In comparison with the IHC on the left, the same paraffin-embedded Human liver cancer tissue is first treated with the fusion protein and then with 219171(Anti-GPCPD1 Antibody) at dilution 1/55.



The image on the left is immunohistochemistry of paraffin-embedded Human prostate cancer tissue using 219171(Anti-GPCPD1 Antibody) at a dilution of 1/55.



In comparison with the IHC on the left, the same paraffin-embedded Human prostate cancer tissue is first treated with fusion protein and then with D225967(Anti-GPCPD1 Antibody) at dilution 1/55.



Gel: 8%SDS-PAGE, Lysate: 40 µg;  
 Lane: A549 cell lysate;  
 Primary antibody: 219171(GPCPD1 Antibody) at dilution 1/800;  
 Secondary antibody: HRP-conjugated Goat anti rabbit IgG at 1/5000 dilution;  
 Exposure time: 50 seconds



# Product Description

Pioneering GTPase and Oncogene Product Development since 2010

---