

## GPC1(1B8) IGG1 CHIMERIC MAB

货号: 28567

产品全名: GPC1(1B8) IgG1 Chimeric 单抗

基因符号 Glypican 1;PC1

描述: GPC1 antibody(1B8) IgG1 Chimeric 单抗

背景: Cell surface heparan sulfate proteoglycans are composed of a membrane-associated protein core substituted with a variable number of heparan sulfate chains. Members of the glypican-related integral membrane proteoglycan family (GRIPS) contain a core protein anchored to the cytoplasmic membrane via a glycosyl phosphatidylinositol linkage. These proteins may play a role in the control of cell division and growth regulation. [provided by RefSeq, Jul 2008]

经过测试的应用: Flow Cyt

推荐稀释比: Flow Cyt 1/100

种属反应性: Rabbit

亚型: Rabbit/Human Fc chimeric IgG1

纯化: Purified from cell culture supernatant by affinity chromatography

种属反应性: 人 GPC1

成分: Lyophilized from sterile PBS, pH 7.4. 5 % – 8% trehalose is added as protectants before lyophilization.

储存和运输: Store at -20°C to -80°C for 12 months in lyophilized form. After reconstitution, if not intended for use within a month, aliquot and store at -80°C (Avoid repeated freezing and thawing).

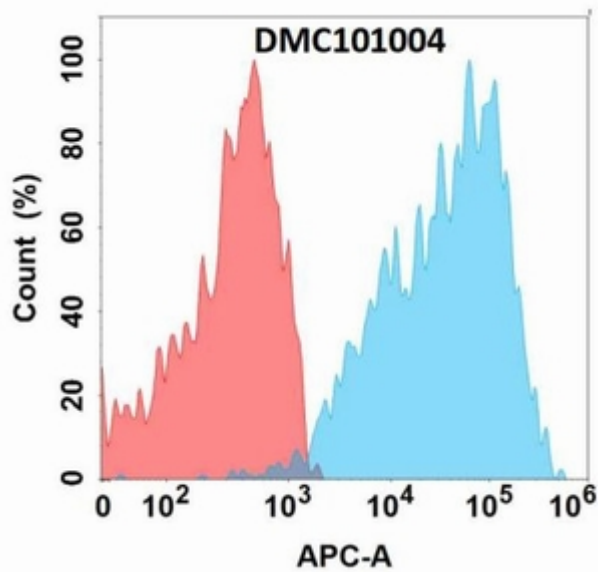


Figure 1. Flow cytometry analysis with Anti-GPC1 (1B8) mAb on Expi293 cells transfected with human GPC1 (Blue histogram) or Expi293 transfected with irrelevant protein (Red histogram).