

GPANK1 RABBIT PAB

货号: S218350

产品全名: GPANK1 兔多抗

基因符号: G5; BAT4; D6S54E; ANKRD59; GPATCH10

UNIPROT ID: O95872 (Gene Accession - BC008783)

背景: This gene is located in a cluster of HLA-B-associated transcripts, which is included in the human major histocompatibility complex III region. This gene encodes a protein which is thought to play a role in immunity. Multiple alternatively spliced variants, encoding the same protein, have been identified.

抗原: Fusion protein of human GPANK1

经过测试的应用: ELISA, IHC

推荐稀释比: IHC: 100-300; ELISA: 5000-10000

种属反应性: Rabbit

克隆性: Rabbit Polyclonal

亚型: Immunogen-specific rabbit IgG

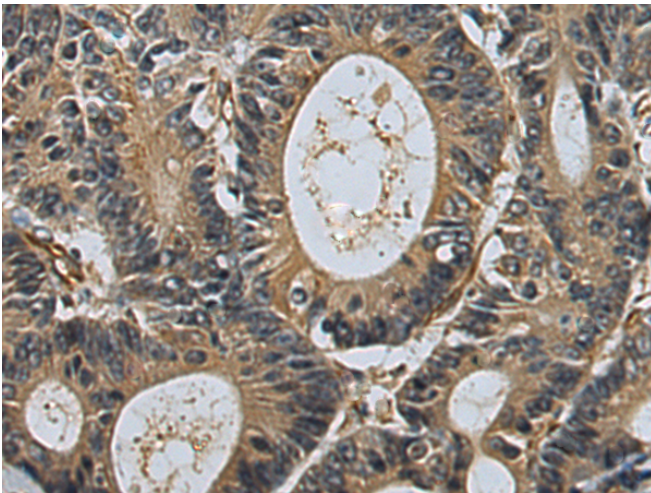
纯化: Antigen affinity purification

种属反应性: Human, Mouse

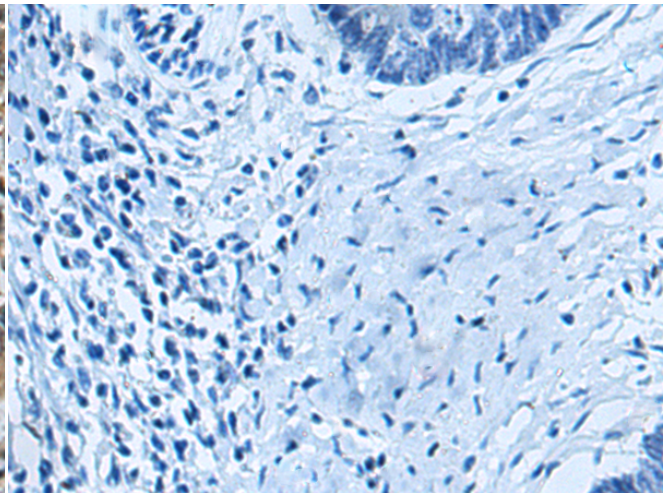
成分: PBS (without Mg²⁺ and Ca²⁺), pH 7.4, 150 mM NaCl, 0.05% Sodium Azide and 40% glycerol

研究领域: Immunology

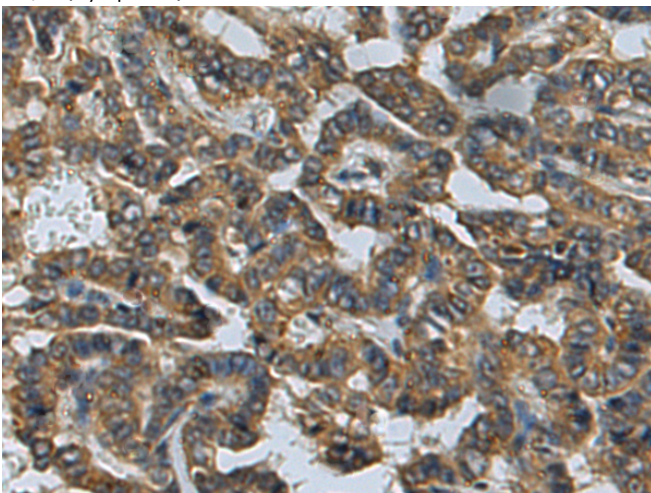
储存和运输: Store at -20°C. Avoid repeated freezing and thawing



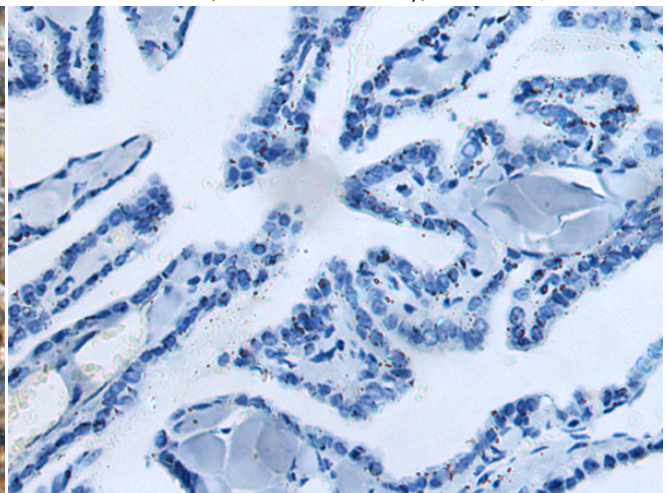
Immunohistochemistry analysis of paraffin embedded Human colorectal cancer tissue using 218350(GPANK1 Antibody) at a dilution of 1/110(Cytoplasm).



In comparison with the IHC on the left, the same paraffin-embedded Human colorectal cancer tissue is first treated with the fusion protein and then with 218350(Anti-GPANK1 Antibody) at dilution 1/110.



The image on the left is immunohistochemistry of paraffin-embedded Human thyroid cancer tissue using 218350(Anti-GPANK1 Antibody) at a dilution of 1/110.



In comparison with the IHC on the left, the same paraffin-embedded Human thyroid cancer tissue is first treated with fusion protein and then with D224231(Anti-GPANK1 Antibody) at dilution 1/110.



Product Description

Pioneering GTPase and Oncogene Product Development since 2010
