

GP2 RABBIT PAB

货号: S213058

产品全名: GP2 兔多抗

基因符号 ZAP75

UNIPROT ID: P55259 (Gene Accession - BC032693)

背景: This gene encodes an integral membrane protein that is secreted from intracellular zymogen granules and associates with the plasma membrane via glycosylphosphatidylinositol (GPI) linkage. The encoded protein binds pathogens such as enterobacteria, thereby playing an important role in the innate immune response. The C-terminus of this protein is related to the C-terminus of the protein encoded by the neighboring gene, uromodulin (UMOD). Alternative splicing results in multiple transcript variants.

抗原: Fusion protein of human GP2

经过测试的应用: ELISA, IHC

推荐稀释比: IHC: 200-400; ELISA: 5000-10000

种属反应性: Rabbit

克隆性: Rabbit Polyclonal

亚型: Immunogen-specific rabbit IgG

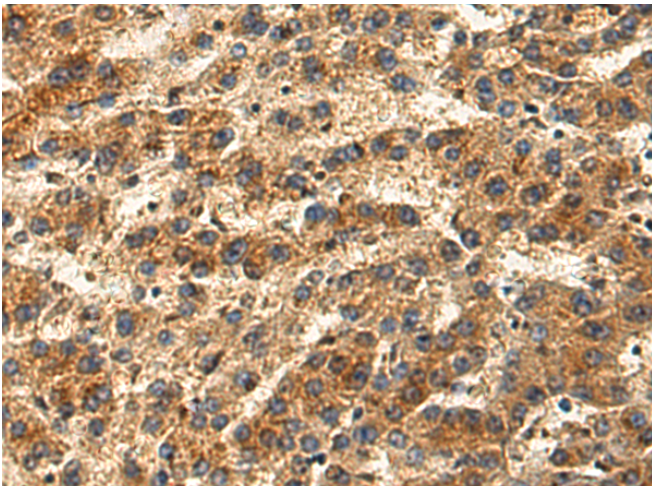
纯化: Antigen affinity purification

种属反应性: Human

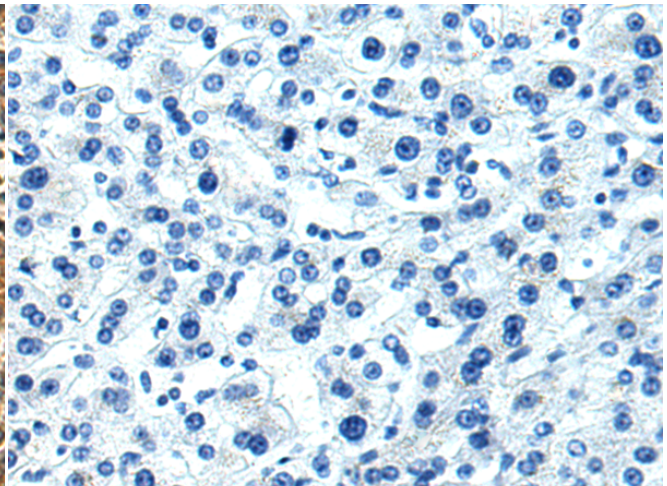
成分: PBS (without Mg²⁺ and Ca²⁺), pH 7.4, 150 mM NaCl, 0.05% Sodium Azide and 40% glycerol

研究领域: Cell Biology

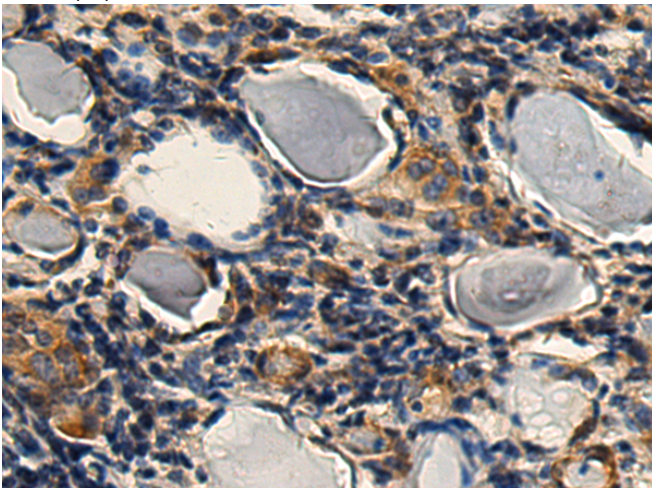
储存和运输: Store at -20°C. Avoid repeated freezing and thawing



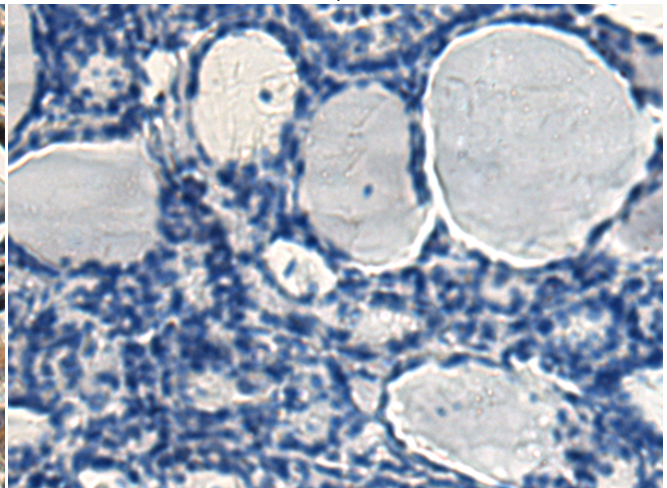
Immunohistochemistry analysis of paraffin embedded Human liver cancer tissue using 213058 (GP2 Antibody) at a dilution of 1/200 (Cytoplasm).



In comparison with the IHC on the left, the same paraffin-embedded Human liver cancer tissue is first treated with the fusion protein and then with 213058 (Anti-GP2 Antibody) at dilution 1/200.



The image on the left is immunohistochemistry of paraffin-embedded Human thyroid cancer tissue using 213058 (Anti-GP2 Antibody) at a dilution of 1/200.



In comparison with the IHC on the left, the same paraffin-embedded Human thyroid cancer tissue is first treated with fusion protein and then with D126552 (Anti-GP2 Antibody) at dilution 1/200.



Product Description

Pioneering GTPase and Oncogene Product Development since 2010
