

## GOT2 RABBIT PAB

货号: S217490

产品全名: GOT2 兔多抗

基因符号: KAT4; DEE82; KATIV; KYAT4; mitAAT

**UNIPROT ID:** P00505 (Gene Accession - BC000525)

**背景:** Glutamic-oxaloacetic transaminase is a pyridoxal phosphate-dependent enzyme which exists in cytoplasmic and inner-membrane mitochondrial forms, GOT1 and GOT2, respectively. GOT plays a role in amino acid metabolism and the urea and tricarboxylic acid cycles. The two enzymes are homodimeric and show close homology. Two transcript variants encoding different isoforms have been found for this gene.

**抗原:** Fusion protein of human GOT2

**经过测试的应用:** ELISA, WB, IHC

**推荐稀释比:** IHC: 50-200;WB: 1000-5000;ELISA: 5000-10000

**种属反应性:** Rabbit

**克隆性:** Rabbit Polyclonal

**亚型:** Immunogen-specific rabbit IgG

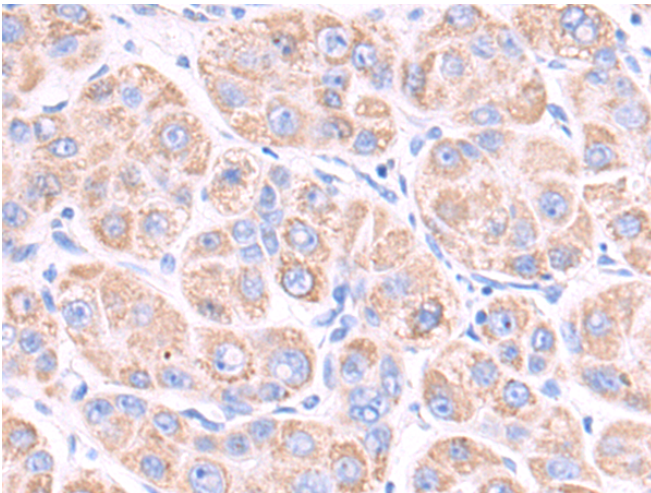
**纯化:** Antigen affinity purification

**种属反应性:** Human, Mouse, Rat

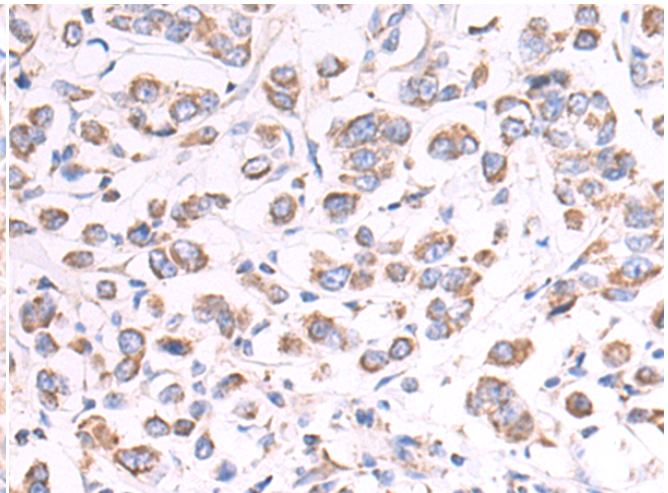
**成分:** PBS (without Mg<sup>2+</sup> and Ca<sup>2+</sup>), pH 7.4, 150 mM NaCl, 0.05% Sodium Azide and 40% glycerol

**研究领域:** Metabolism, Cancer

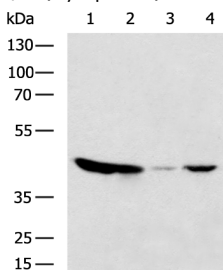
**储存和运输:** Store at -20°C. Avoid repeated freezing and thawing



Immunohistochemistry analysis of paraffin-embedded Human liver cancer tissue using 217490(GOT2 Antibody) at a dilution of 1/70(Cytoplasm).



Immunohistochemistry analysis of paraffin-embedded Human breast cancer tissue using 217490(Anti-GOT2 Antibody) at a dilution of 1/70.



Gel: 8%SDS-PAGE, Lysate: 40 µg;

Lane 1-4: Mouse heart tissue, 293T cell, Mouse fetal liver tissue, Mouse brain tissue lysates;

Primary antibody: 217490(GOT2 Antibody) at dilution 1/1200;

Secondary antibody: HRP-conjugated Goat anti rabbit IgG at 1/5000 dilution;

Exposure time: 1 second